

## Product datasheet for **SC330035**

### PRKACB (NM\_001242862) Human Untagged Clone

#### Product data:

**Product Type:** Expression Plasmids  
**Product Name:** PRKACB (NM\_001242862) Human Untagged Clone  
**Tag:** Tag Free  
**Symbol:** PRKACB  
**Synonyms:** CAFD2; PKA C-beta; PKACB  
**Vector:** pCMV6-Entry (PS100001)  
**Fully Sequenced ORF:** >SC330035 representing NM\_001242862.  
Blue=Insert sequence Red=Cloning site Green=Tag(s)

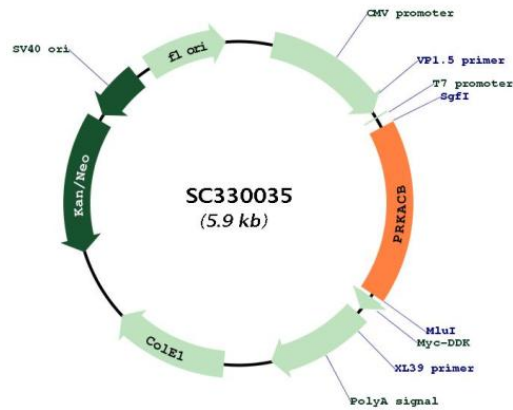
```
ATGCTGCTACTATCTAGTTCTATAAGCTTATATAAAGACAGAAATGAAGCAAGACTGATTTCTTCACAG
AATAATGCCGGACTTGAAGATTTTGAAGGAAAAAACCTTGGAACAGGTTCAATTTGGAAGAGTCATG
TTGGTAAAACACAAGCCACTGAACAGTATTATGCCATGAAGATCTTAGATAAGCAGAAGGTTGTTAAA
CTGAAGCAAATAGAGCATACTTTGAATGAGAAAAGAATATTACAGGCAGTGAATTTCTTTCTTGTGTT
CGACTGGAGTATGCTTTTAAAGGATAATTCTAATTTATACATGGTTATGGAATATGTCCTGGGGTGAA
ATGTTTTTCACATCTAAGAAGAATTGGAAGGTTTCAGTGAGCCCATGCACGTTCTATGCAGCTCAGATA
GTGCTAACATTTCGAGTACCTCCATTCAGTACCTCATCTACAGAGATCTAAAACCTGAAAACTCTTTA
ATTGACCATCAAGGCTATATCCAGGTCACAGACTTTGGGTTTGC AAAAGAGTTAAAGGCAGA AACTGG
ACATTATGTGGA ACTCCAGAGTATTTGGCTCCAGAAAATAATTCTCAGCAAGGGCTACAATAAGGCAGTG
GATTGGTGGGCATTAGGAGTGCTAATCTATGAAATGGCAGCTGGCTATCCCCATTCTTTGCAGACCAA
CCAATTCAGATTTATGAAAAGATTGTTTCTGAAAAGGTCGGATTTCCATCCCCTTCAGTTCAGATCTC
AAGGACCTTCTACGGAACCTGCTGCAGGTGGATTTGACCAAGAGATTTGGAATCTAAAGAATGGTGTC
AGTGATATAAAAACTCACAAGTGGTTTCCACGACAGATTGGATTGCTATTTACCAGAGGAAGGTTGAA
GCTCCATTCATACCAAAGTTTAGAGGCTCTGGAGATACCAGCACTTTGATGACTATGAAGAAGAAGAT
ATCCGTGCTCTATAACAGAAAAATGTGCAAAAAGAATTTGGTGAATTTAA
```

**Restriction Sites:** SgfI-MluI



[View online »](#)

## Plasmid Map:



ACCN: NM\_001242862

Insert Size: 1017 bp

OTI Disclaimer: Our molecular clone sequence data has been matched to the reference identifier above as a point of reference. Note that the complete sequence of our molecular clones may differ from the sequence published for this corresponding reference, e.g., by representing an alternative RNA splicing form or single nucleotide polymorphism (SNP).

Components: The ORF clone is ion-exchange column purified and shipped in a 2D barcoded Matrix tube containing 10ug of transfection-ready, dried plasmid DNA (reconstitute with 100 ul of water).

Reconstitution Method:
 

1. Centrifuge at 5,000xg for 5min.
2. Carefully open the tube and add 100ul of sterile water to dissolve the DNA.
3. Close the tube and incubate for 10 minutes at room temperature.
4. Briefly vortex the tube and then do a quick spin (less than 5000xg) to concentrate the liquid at the bottom.
5. Store the suspended plasmid at -20°C. The DNA is stable for at least one year from date of shipping when stored at -20°C.

RefSeq: [NM\\_001242862.1](#)

RefSeq Size:	4226 bp
RefSeq ORF:	1017 bp
Locus ID:	5567
UniProt ID:	<a href="#">P22694</a>
Cytogenetics:	1p31.1
Protein Families:	Druggable Genome, Protein Kinase
Protein Pathways:	Apoptosis, Calcium signaling pathway, Chemokine signaling pathway, Dilated cardiomyopathy, Gap junction, GnRH signaling pathway, Hedgehog signaling pathway, Insulin signaling pathway, Long-term potentiation, MAPK signaling pathway, Melanogenesis, Olfactory transduction, Oocyte meiosis, Prion diseases, Progesterone-mediated oocyte maturation, Taste transduction, Vascular smooth muscle contraction, Vibrio cholerae infection, Wnt signaling pathway
MW:	39.2 kDa
Gene Summary:	<p>The protein encoded by this gene is a member of the serine/threonine protein kinase family. The encoded protein is a catalytic subunit of cAMP (cyclic AMP)-dependent protein kinase, which mediates signalling through cAMP. cAMP signaling is important to a number of processes, including cell proliferation and differentiation. Multiple alternatively spliced transcript variants encoding distinct isoforms have been observed. [provided by RefSeq, Jul 2014]</p> <p>Transcript Variant: This variant (9) differs in the 5' exon structure, compared to variant 1. The encoded isoform (9) has a distinct N-terminus and is shorter than isoform 1.</p>