

## Product datasheet for **SC329852**

### **CTNND1 (NM\_001206886) Human Untagged Clone**

#### **Product data:**

Product Type:	Expression Plasmids
Product Name:	CTNND1 (NM_001206886) Human Untagged Clone
Tag:	Tag Free
Symbol:	CTNND1
Synonyms:	BCDS2; CAS; CTNND; p120; p120(CAS); p120(CTN); P120CAS; P120CTN
Vector:	pCMV6-Entry (PS100001)



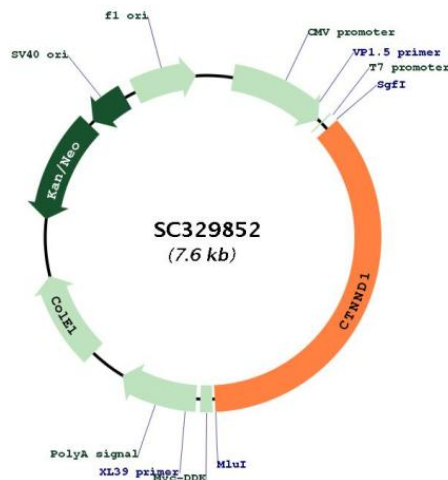
[View online »](#)

**Fully Sequenced ORF:** >SC329852 representing NM\_001206886.  
 Blue=Insert sequence Red=Cloning site Green=Tag(s)

```

ATGGCCAACGGCACACTCACCCGCCGCATCAGAACGGCCGGTTTGTGGGCGATGCTGACCTTGAAAGA
CAGAAATTTTTCAGATTTGAAACTCAACGGACCCAGGATCACAGTCACCTTCTATATAGCACCATCCCC
AGGATGCAGGAGCCGGGCGAGATTGTGGAGACCTACACGGAGGAGGATCCTGAGGGAGCCATGCTGTA
GTCTCTGTGGAGACCTCAGATGATGGACCACCTCGGCCACAGAGACCACGGTCAAGAAAGTAGTGAAG
ACTGTGACAACACGGACAGTACAGCCAGTCGCTATGGGACCAGACGGGTTGCCTGTGGATGCTTCATCA
GTTTCTAACAACTATATCCAGACTTTGGGTCGTGATTTCCGCAAGAATGGCAATGGGGGACCTGGTCCC
TATGTGGGCAAGCTGGCACTGCTACCCTTCTAGGAACTTCCACTACCCTCCTGATGGTTATAGTCGC
CACTATGAAGATGGTTATCCAGGTGGCAGTGATAACTATGGCAGTCTGTCCCGGGTGACCCGATTGAG
GAGCGGTATAGGCCCAGCATGGAAGGCTACCGGGCACCTAGTAGACAGGATGTGTATGGGCCCAACCC
CAGGTTCCGGTAGGTGGGAGCAGCGTGGATCTGCATCGCTTTCATCCAGAGCCTTATGGGCTAGAGGAT
GACCAGCGTAGTATGGGCTATGATGACCTGGATTATGGTATGATGTCTGATTATGGCACTGCCCGTCGG
ACTGGGACACCCTCTGACCTCGTCGGCGCCTCAGGAGCTATGAAGACATGATTGGTGGAGAGGTGCCA
TCGGATCAATACTACTGGGCTCCTTTGGCCAGCATGAGCGAGGAAGTTTAGCAAGCTTGGATAGCCTG
CGCAAAGGAGGGCCTCCACCTCCTAATTGGAGACAGCCAGAGCTGCCAGAGGTGATCGCCATGCTTGG
TTCCGCTTGGATGCTGTCAAGTCCAATGCAGCTGCATACCTGCAACACTTATGCTACCGCAATGACAAG
GTGAAGACTGACGTGCGGAAGCTCAAGGGCATCCCAGTACTGGTGGGATTGTTAGACCATCCCAAAAAG
GAAGTGCACCTTGGAGCCTGTGGAGCTCTCAAGAAATATCTCTTTTGGACGTGACCAGGATAACAAGATT
GCCATAAAAACTGTGATGGTGTGCCTGCCCTTGTGCGATTGCTTCGAAAGGCTCGTGATATGGACCTT
ACTGAAGTTATTACCGGAACCTGTGGAATCTTTCATCCCAGTCAATCAAAATGGAGATTGTGGAC
CATGCACTGCATGCCTTGACAGATGAAGTGAATCCTCATTCTGGTTGGGACGGGAACCTAATGAA
GACTGTAAAGCCACGCCATATTGAGTGGGAATCGGTGCTCACCAACACAGCTGGCTGCCTTAGGAATGTA
AGCTCAGAGAGGAGTGAAGCTCGCCGAAACTCGGGAATGTGATGGTTTAGTTGATGCCCTCATTTTC
ATTGTTACAGGCTGAGATTGGGCAGAAGGATTAGACAGCAAGCTTGTAGAGAAGTGTGTTTGCCTTCTT
CGGAACTTATCATATCAAGTTCACCGGGAGATCCACAGGCAGAGCGTTACCAAGAGGCAGCTCCCAAT
GTTGCCAACAATACTGGGCCACATGCTGCCAGTTGCTTTGGGGCAAGAAGGGCAAGGGAAAAAACCCT
ATAGAGGATCCAGCAAACGATACAGTGGATTTCCCTAAAAGAACGAGTCCAGCTCGAGGCTATGAGCTC
TTATTTACGCCAGAGGTGGTTCCGATATACATCTCACTTCTTAAGGAGAGCAAGACTCCTGCCATCCTA
GAAGCCTCAGCTGGAGCTATCCAGAACTGTGTGCTGGGCGCTGGACGTATGGTCGATACATCCGCTCT
GCTCTGCGTCAAGAGAAGGCTCTTCTGCCATAGCTGACCTCCTGACTAATGAACATGAACGGGTGGTG
AAAGCTGCATCTGGAGCACTGAGAACTGGCTGTGGATGCTCGCAACAAAGAATTAATTGGTAAACAT
GCTATTCCTAACTTGGTAAAGAATCTGCCAGGAGGACAGCAGAATCCTCTTGGAAATTTCTCTGAGGAC
ACTGTCATCTCTATTTTGAACACTATCAACGAGGTTATCGCTGAGAACTTGGAGGCTGCCAAAAGCTT
CGAGAGACACAGGGTATTGAGAAGCTGGTGTGATCAACAAATCAGGGAACCGCTCAGAAAAAGAAGTT
CGAGCAGCAGCACTTGTATTACAGACAATCTGGGGATATAAGGAACTGCGGAAGCCACTGGAAAAAGAA
GGATGGAAGAAATCAGACTTTTCAAGTGAATCTAAACAATGCTTCCCGAAGCCAGAGCAGTCATTCATAT
GATGATAGTACTCTCCCTCTCATTGACCGGAACCAAAAATCAGATAAGAAACCTGATCGGGAAGAAAT
CAGATGAGCAATATGGGATCAAACACAAAATCACTAGATAACAATATTCCACACCAAAATGAGAGAGGA
GACCACAATAGAACACTGGATCGATCGGGGATCTAGGCGACATGGAGCCATTGAAGGGAACAACCCC
TTGATGCAGGACGAGGGCAGGAATCTCTGGAGGAAGAGTTGGATGTGTTGGTTTTGGATGATGAGGGG
GGCCAAGTGTCTTACCCCTCCATGCAGAAGATTAG
  
```

**Restriction Sites:** Sgfl-Mlul

**Plasmid Map:**


**ACCN:** NM\_001206886

**Insert Size:** 2727 bp

**OTI Disclaimer:** Our molecular clone sequence data has been matched to the reference identifier above as a point of reference. Note that the complete sequence of our molecular clones may differ from the sequence published for this corresponding reference, e.g., by representing an alternative RNA splicing form or single nucleotide polymorphism (SNP).

**Components:** The ORF clone is ion-exchange column purified and shipped in a 2D barcoded Matrix tube containing 10ug of transfection-ready, dried plasmid DNA (reconstitute with 100 ul of water).

**Reconstitution Method:**

1. Centrifuge at 5,000xg for 5min.
2. Carefully open the tube and add 100ul of sterile water to dissolve the DNA.
3. Close the tube and incubate for 10 minutes at room temperature.
4. Briefly vortex the tube and then do a quick spin (less than 5000xg) to concentrate the liquid at the bottom.
5. Store the suspended plasmid at -20°C. The DNA is stable for at least one year from date of shipping when stored at -20°C.

**RefSeq:** [NM\\_001206886.1](#)

**RefSeq Size:** 6044 bp

**RefSeq ORF:** 2727 bp

**Locus ID:** 1500

**UniProt ID:** [O60716](#)

**Cytogenetics:** 11q12.1

**Protein Families:** Druggable Genome

**Protein Pathways:** Adherens junction, Leukocyte transendothelial migration

**MW:** 101.2 kDa

**Gene Summary:**

This gene encodes a member of the Armadillo protein family, which function in adhesion between cells and signal transduction. Multiple translation initiation codons and alternative splicing result in many different isoforms being translated. Not all of the full-length natures of the described transcript variants have been determined. Read-through transcription also exists between this gene and the neighboring upstream thioredoxin-related transmembrane protein 2 (TMX2) gene. [provided by RefSeq, Dec 2010]

Transcript Variant: This variant (17) differs in the 5' UTR and has multiple coding region differences, compared to variant 1. The encoded isoform (2AB) is shorter than isoform 1ABC.

Sequence Note: This RefSeq record was created from transcript and genomic sequence data to make the sequence consistent with the reference genome assembly. The genomic coordinates used for the transcript record were based on transcript alignments.