

## Product datasheet for **SC329849**

### CTNND1 (NM\_001206883) Human Untagged Clone

#### Product data:

Product Type:	Expression Plasmids
Product Name:	CTNND1 (NM_001206883) Human Untagged Clone
Tag:	Tag Free
Symbol:	CTNND1
Synonyms:	BCDS2; CAS; CTNND; p120; p120(CAS); p120(CTN); P120CAS; P120CTN
Vector:	pCMV6-Entry (PS100001)

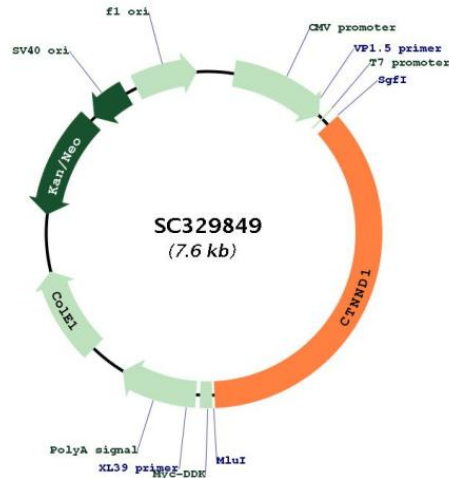


[View online »](#)

Fully Sequenced ORF: >SC329849 representing NM\_001206883.  
Blue=Insert sequence Red=Cloning site Green=Tag(s)

```
ATGGCCAACGGCACACTCACCCGCCGCATCAGAACGGCCGGTTTGTGGGCGATGCTGACCTTGAAAGA
CAGAAATTTTTCAGATTTGAAACTCAACGGACCCAGGATCACAGTCACCTTCTATATAGCACCATCCCC
AGGATGCAGGAGCCGGGGCAGATTGTGGAGACCTACACGGAGGAGGATCCTGAGGGAGCCATGTCTGA
GTCTCTGTGGAGACCTCAGATGATGGGACCACTCGGCCACAGAGACCACGGTCAAGAAAGTAGTGAAG
ACTGTGACAACACGGACAGTACAGCCAGTCGCTATGGGACCAGACGGGTTGCCTGTGGATGCTTCATCA
GTTTCTAACAACTATATCCAGACTTTGGGTCGTGATTTCCGCAAGAATGGCAATGGGGGACCTGGTCCC
TATGTGGGGCAAGCTGGCACTGCTACCCTTCTAGGAACTTCCACTACCCTCCTGATGGTTATAGTCGC
CACTATGAAGATGGTTATCCAGGTGGCAGTGATAACTATGGCAGTCTGTCCCGGGTGACCCGATTGAG
GAGCGGTATAGGCCCAGCATGGAAGGCTACCGGGCACCTAGTAGACAGGATGTGTATGGGCCCAACCC
CAGGTTCCGGTAGGTGGGAGCAGCGTGGATCTGCATCGCTTTCATCCAGAGCCTTATGGGCTAGAGGAT
GACCAGCGTAGTATGGGCTATGATGACCTGGATTATGGTATGATGTCTGATTATGGCACTGCCCGTCGG
ACTGGGACACCCTCTGACCTCGTCGGCGCCTCAGGAGCTATGAAGACATGATTGGTGGAGAGGTGCCA
TCGGATCAATACTACTGGGCTCCTTGGCCAGCATGAGCGAGGAAGTTTAGCAAGCTTGGATAGCCTG
CGCAAAGGAGGGCCTCCACCTCCTAATTGGAGACAGCCAGAGCTGCCAGAGGTGATCGCCATGCTTGG
TTCCGCTTGGATGCTGTCAAGTCCAATGCAGCTGCATACCTGCAACACTTATGCTACCGCAATGACAAG
GTGAAGACTGACGTGCGGAAGCTCAAGGGCATCCCAGTACTGGTGGGATTGTTAGACCATCCCAAAAAG
GAAGTGACCTTGGAGCCTGTGGAGCTCTCAAGAAATATCTCTTTGGACGTGACCCAGGATAACAAGATT
GCCATAAAAACTGTGATGGTGTGCCTGCCCTTGTGCGATTGCTTCGAAAGGCTCGTGATATGGACCTT
ACTGAAGTTATTACCGGAACCTGTGGAATCTTTCATCCCAGTCAATCAAAAATGGAGATTGTGGAC
CATGCATGCCTTGGACAGATGAAGTGCATTTCTCATTCTGGTTGGGAGCGGGAACCTAATGAA
GACTGTAAAGCCACGCCATATTGAGTGGGAATCGGTGCTCACCAACACAGCTGGCTGCCTTAGGAATGTA
AGCTCAGAGAGGAGTGAAGCTCGCCGAAACTCGGGAATGTGATGGTTTAGTTGATGCCCTCATTTTC
ATTGTTACAGGCTGAGATTGGGCAGAAGGATTGAGACAGCAAGCTTGTAGAGAAGTGTGTTTGCCTTCTT
CGGAACTTATCATATCAAGTTCACCGGGAGATCCACAGGCAGAGCGTTACCAAGAGGCAGCTCCCAAT
GTTGCCAACAATACTGGGCCACATGCTGCCAGTTGCTTTGGGGCCAAGAAGGGCAAAGATGAGTGGTTC
TCCAGAGGGAAAAACCTATAGAGGATCCAGCAAACGATACAGTGGATTTCCCTAAAAGAACGAGTCCA
GCTCGAGGCTATGAGCTTATTTAGCCAGAGGTGGTTCGGATATACATCTCACTTCTTAAGGAGAGC
AAGACTCCTGCCATCCTAGAAGCCTCAGCTGGAGCTATCCAGAACTTGTGTGCTGGGCGCTGGACGTAT
GGTCGATACATCCGCTCTGCTCTGCGTCAAGAGAAGGCTTTTCTGCCATAGCTGACCTCCTGACTAAT
GAACATGAACGGGTGGTAAAGCTGCATCTGGAGCACTGAGAAACCTGGCTGTGGATGCTCGCAACAAA
GAATTAATTGGTAAACATGCTATTCTAACTTGGTAAAGAATCTGCCAGGAGGACAGCAGAACTCCTCT
TGGAATTTCTCTGAGGACACTGTCACTCTATTTTGAACACTATCAACGAGGTTATCGCTGAGAAGTTG
GAGGCTGCCAAAAAGCTTCGAGAGACACAGGATTTGAGAAGCTGGTGTGATCAACAAATCAGGGAAC
CGCTCAGAAAAAGAAGTTCGAGCAGCAGCACTTGATTACAGACAATCTGGGGATATAAGGAACTGCGG
AAGCCACTGAAAAAGAAGGATGGAAGAAATCAGACTTTCAGGTGAATCTAAACAATGCTTCCCGAAGC
CAGAGCAGTCATTATATGATGATGATGATGATGATGATGATGATGATGATGATGATGATGATGATGATG
CCTGATCGGGAAGAAATTCAGATGAGCAATATGGGATCAAACACAAAAATCACTAGATAAACAACTATTCC
ACACCAAATGAGAGAGGAGACCACAATAGAACACTGGATCGATCGGGGGTCTAGGCGACATGGAGCCA
TTGAAGGGAACAACACCCTTGTATGCAGGACGAGGGGCAGGAATCTCTGGAGGAAGAGTTGGATGTGTTG
GTTTTGGATGATGAGGGGGCCAAGTGTCTTACCCTCCATGCAGAAGATTAG
```

Restriction Sites: SgfI-MluI

**Plasmid Map:**


**ACCN:** NM\_001206883

**Insert Size:** 2745 bp

**OTI Disclaimer:** Our molecular clone sequence data has been matched to the reference identifier above as a point of reference. Note that the complete sequence of our molecular clones may differ from the sequence published for this corresponding reference, e.g., by representing an alternative RNA splicing form or single nucleotide polymorphism (SNP).

**Components:** The ORF clone is ion-exchange column purified and shipped in a 2D barcoded Matrix tube containing 10ug of transfection-ready, dried plasmid DNA (reconstitute with 100 ul of water).

**Reconstitution Method:**

1. Centrifuge at 5,000xg for 5min.
2. Carefully open the tube and add 100ul of sterile water to dissolve the DNA.
3. Close the tube and incubate for 10 minutes at room temperature.
4. Briefly vortex the tube and then do a quick spin (less than 5000xg) to concentrate the liquid at the bottom.
5. Store the suspended plasmid at -20°C. The DNA is stable for at least one year from date of shipping when stored at -20°C.

**RefSeq:** [NM\\_001206883.1](#)

**RefSeq Size:** 6062 bp

**RefSeq ORF:** 2745 bp

**Locus ID:** 1500

**UniProt ID:** [O60716](#)

**Cytogenetics:** 11q12.1

**Protein Families:** Druggable Genome

**Protein Pathways:** Adherens junction, Leukocyte transendothelial migration

**MW:** 102.1 kDa

**Gene Summary:**

This gene encodes a member of the Armadillo protein family, which function in adhesion between cells and signal transduction. Multiple translation initiation codons and alternative splicing result in many different isoforms being translated. Not all of the full-length natures of the described transcript variants have been determined. Read-through transcription also exists between this gene and the neighboring upstream thioredoxin-related transmembrane protein 2 (TMX2) gene. [provided by RefSeq, Dec 2010]

Transcript Variant: This variant (14) differs in the 5' UTR, lacks a portion of the 5' coding region, and initiates translation at a downstream start codon, compared to variant 1. The encoded isoform (2ABC) has a shorter N-terminus than isoform 1ABC. Sequence Note: This RefSeq record was created from transcript and genomic sequence data to make the sequence consistent with the reference genome assembly. The genomic coordinates used for the transcript record were based on transcript alignments.