

## Product datasheet for **SC328002**

### **PATL1 (NM\_152716) Human Untagged Clone**

#### **Product data:**

Product Type:	Expression Plasmids
Product Name:	PATL1 (NM_152716) Human Untagged Clone
Tag:	Tag Free
Symbol:	PATL1
Synonyms:	hPat1b; Pat1b
Mammalian Cell Selection:	Neomycin
Vector:	pCMV6-Entry (PS100001)
E. coli Selection:	Kanamycin (25 ug/mL)



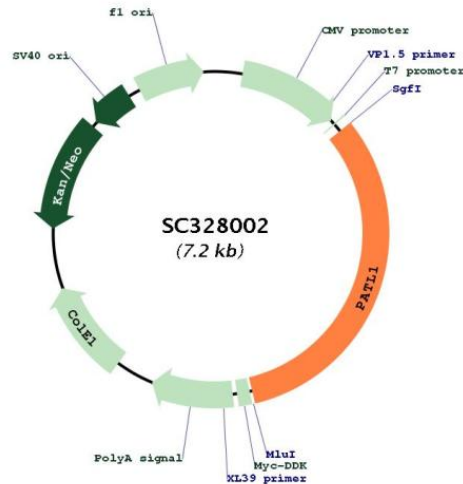
[View online »](#)

**Fully Sequenced ORF:** >SC328002 representing NM\_152716.  
 Blue=Insert sequence Red=Cloning site Green=Tag(s)

```

GCTCGTTTAGTGAACCGTCAGAATTTTGTAAACGACTCACTATAGGGCGGCCGGGAATTCGTGACTG
GATCCGGTACCGAGGAGATCTGCCGCCCGGATCGCC
ATGTTCCGCTACGAGTCTTTGGAGGATTGCTCTGGATGAAGATGAAGATGCATTTCAGGGACTGGGA
GAAGAAGATGAAGAGATTGATCAATTCAATGATGATACATTTGGGTCAGGTGCAGTTGATGATGATTGG
CAGGAAGCACATGAGCGCCTGGCTGAATTGGAAGAAAAGCTACCAAGTGGCAGTTAATGAACAAACAGGC
AATGGAGAGAGAGATGAAATGGACTTGTGGGTGACCATGAGGAGAATCTGGCAGAAAGGCTCAGTAAG
ATGGTGATTGAAAATGAACTAGAAGATCCAGCTATTATGAGGGCAGTGCAGACCAGGCCAGTTTTACAA
CCCCAACAGGAAGTCTGAATCCAGTATCTGGGATGGATCTGAAGTTCTGAGGCGAATCCGAGGACCA
CTGCTTGCTCAGGAAATGCCTACAGTGTCTGTATTAGAATATGCTTTGCCTCAGAGGCCCCCCAGGGT
CCAGAAGATGATCGGGACCTTTCTGAACGAGCATTACCAAGGCGGTCACTTCACCTATCATTGGCAGT
CCTCCTGTAGAGCTGTCCCATAGGCACCCACCTAACAGATGGCTGTACCCAGCTTCACCCAACAG
ATTCTGTGTCGGAAGCCTGTCCATGTTTCGGCCCCAATGCCACCTCGTTATCCTGCTCCCTATGGTGAG
AGGATGTCTCAAACAGCTCTGCAAGTGTCCCAACTCTCCCTCCTGGGTCACCCCTTTCTCCTAGT
GTTCTCCTGTTCTCAGCCCCCTCCAGAGAGCACAGCTTCTTGGAGGAGCACAGCTACAGCCTGGACGG
ATGTCTCCAGCCAGTTTGCACGGGTCCTGGATTTGTTGGTAGTCCACTTGCTGCCATGAATCCCAAG
TTGCTACAAGGGCGAGTTGGGCAGATGCTTCCCCCAGCACCAGGCTTCCGTGCCTTCTTTAGTGCTCA
CCCTCCGTACACCACCTCCACAGCAGCACCTCCTGGCCAGGACCCACCTGCAAAACCTAAGATCT
CAGGCCCAATGTTTAGACCGGACACAACCTCACCTCCATCCACAGCACCCTCGACTCTTGATCAGAGA
CAGCAACAGAATAGAAGTCAGCATCGGAATCTCAATGGTGCGGGAGATAGAGGAAGTACCAGGAGCAGT
CATCAAGATCATCTCGAAAGGATCCATATGCCAATCTCATGTTGCAGCGGAAAAGGATTGGGTCTCT
AAAATCCAGATGATGCAACTGCAAAGCACTGATCCCTACCTGGATGATTTTTATTACCAGAATTACTTT
GAAAAACTGGAGAACTGTCAGCTGCTGAAGAAAATACAAGGTGATGGCCCTAAGAAGGAGCGCACCAAG
CTTATCACCCCTCAGGTGGCCAACTGGAGCACGCCTATAAGCCAGTGCATTTGAGGGCTCTTTGGGA
AAGCTTACCGTTTCTAGTGTGAATAATCCCGAAAAATGATTGATGCTGTTGTGACATCTCGGAGTGAG
GATGATGAGACAAAAGAAAAACAAGTTCGAGACAAGAGGAGAAAAACCTTGTTATAATTGAGAAAAAC
TACAGCTTACTCCTTGATGTGGAGGACTATGAAAGACGTTATCTCCTAAGTCTGGAAGAAGAGCGACCT
GCCCTAATGGATGACAGAAAGCACAAAATTTGTAGCATGTATGACAACCTAAGGGGAAAATTGCCTGGA
CAAGAGAGGCCTAGTGATGACCCTTTGTACAGATCATGTGTATCCGAAAAGGGAAGAGAATGGTTGCC
CGTATTCTTCTTCTCCTCCTCACAGAGCAAGCAGCTGACATTCTCATGACAACAGCCAGGAACCTCCT
TTCTTATCAAGAAGGATGCACAAGATGAGGTGCTGCCATGCTTACTGAGTCCCTTCTCTCTCCTCTC
TATCATCTTCCATCAGTGAGTATCACAGCCTTTTGCACAGCTAATGAACCTACCTCAAAGTGCAGCT
ACACCAGCACTCTCCAATCCTCACCTCACTGCTGTGCTCCAGAACAAGTTGGCCTGCACTGCTCCTC
ATCCTCCTGAGCCGTGGTGAAGACCTACAGAGTTCAGACCCTGCTACAGAATCAACACAAAATAATCAG
TGGACGGAGGTGATGTTTATGGCAACACGAGAATCTGCGGATCCCAAGCAGCCCTGGCCAAGCCA
ATCTCTATACCTACAAACCTAGTGTCCCTTTTCTCGCTATGTTGACCGGCAGAAAAGTGAACCTGCTG
GAGACAAAAGTGCAGCTAGTTCAGGGATACGA TAA
ACGCGTACGCGGCCGCTCGAGCAGAAACTCATCTCAGAAGAGGATCTGGCAGCAAATGATATCCTGGAT
TACAAGGATGACGACGATAAGGTTTAAACGGCCGGC
  
```

**Restriction Sites:** SgfI-MluI

**Plasmid Map:**


**ACCN:** NM\_152716

**Insert Size:** 2313 bp

**OTI Disclaimer:** Our molecular clone sequence data has been matched to the reference identifier above as a point of reference. Note that the complete sequence of our molecular clones may differ from the sequence published for this corresponding reference, e.g., by representing an alternative RNA splicing form or single nucleotide polymorphism (SNP).

**OTI Annotation:** This TrueClone is provided through our Custom Cloning Process that includes sub-cloning into OriGene's pCMV6 vector and full sequencing to provide a non-variant match to the expected reference without frameshifts, and is delivered as lyophilized plasmid DNA.

**Components:** The ORF clone is ion-exchange column purified and shipped in a 2D barcoded Matrix tube containing 10ug of transfection-ready, dried plasmid DNA (reconstitute with 100 ul of water).

**Reconstitution Method:**

1. Centrifuge at 5,000xg for 5min.
2. Carefully open the tube and add 100ul of sterile water to dissolve the DNA.
3. Close the tube and incubate for 10 minutes at room temperature.
4. Briefly vortex the tube and then do a quick spin (less than 5000xg) to concentrate the liquid at the bottom.
5. Store the suspended plasmid at -20°C. The DNA is stable for at least one year from date of shipping when stored at -20°C.

**RefSeq:** [NM\\_152716.2](#)

**RefSeq Size:** 4142 bp

**RefSeq ORF:** 2313 bp

**Locus ID:** 219988

**UniProt ID:** [Q86TB9](#)

**Cytogenetics:** 11q12.1

**Protein Pathways:** RNA degradation

**MW:** 86.9 kDa

**Gene Summary:** RNA-binding protein involved in deadenylation-dependent decapping of mRNAs, leading to the degradation of mRNAs. Acts as a scaffold protein that connects deadenylation and decapping machinery. Required for cytoplasmic mRNA processing body (P-body) assembly. In case of infection, required for translation and replication of hepatitis C virus (HCV). [UniProtKB/Swiss-Prot Function]