

Product datasheet for **SC327982**

TBC1D15 (NM_022771) Human Untagged Clone

Product data:

Product Type:	Expression Plasmids
Product Name:	TBC1D15 (NM_022771) Human Untagged Clone
Tag:	Tag Free
Symbol:	TBC1D15
Synonyms:	RAB7-GAP
Mammalian Cell Selection:	Neomycin
Vector:	pCMV6-Entry (PS100001)
E. coli Selection:	Kanamycin (25 ug/mL)



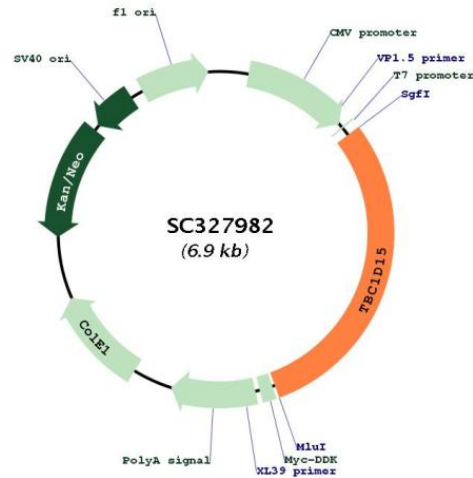
[View online »](#)

Fully Sequenced ORF: >SC327982 representing NM_022771.
 Blue=Insert sequence Red=Cloning site Green=Tag(s)

```

GCTCGTTTAGTGAACCGTCAGAATTTTGTAAATACGACTCACTATAGGGCGGCCGGGAATTCGTGACTG
GATCCGGTACCGAGGAGATCTGCCGCCCGATCGCC
ATGGCGCGCGGGTGTGTGAGCGGGAAGATTATATGAACAAGAAGGAGTATATATTCCTCATCT
TGTGGAAGACCAATGACCAAGACGGCTTGATTCAGGAATATTACGTGTTTTAGAAAAGGATGCCGAA
GTAAATAGTGACTGGAGACCATTGGATGATGCATTAGATTCTCTAGTATTCTCTATGCTAGAAAGGAC
TCCAGTTCAGTTGTAGAATGGACTCAGGCCCAAAAGAAAGAGGTCATCGAGGATCAGAACATCTGAAC
AGTTACGAAGCAGAATGGGACATGGTTAATACAGTTTCATTTAAAAGGAAACCACATACCAATGGAGAT
GCTCCAAGTCATAGAAATGGGAAAAGCAAATGGTCATTCTGTTGAGTTTACAGACCTGAAATCAATC
AAGCAAAACAAAGAGGGTATGGGCTGGTCTATTTGGTATTCTGTCTAAAGGATGACGTCGTTCTCCCT
GCTCTACACTTTCATCAAGGAGATAGCAAACACTACTGATTGAATCTCTGAAAAATATGTGGTATTGTG
GAATCTCCACAGGATAAAAGAACAACCTTCTGTGAATTGCAGAATAAGAGTCTTTCACAGCTTTTGAA
AATCTTCTTGATGAGCCAGCATATGGTTAATACAAGCAGGACTGCTAGACAGAAGAAAGCTGTTGTGG
GCCATTACCACTGGAAAAAATTA AAAAGGACCTTATACGGCAACTATGATAGGATTTCCAAAGTC
ACAAACTACATTTTTGACAGTTTGAGAGGCAGCGATCCCTCTACACATCAACGACCACCTTCAGAAATG
GCAGATTTTCTAGTGATGCTATTCAGGTCTAAAGATAAATCAACAAGAAGAACCAGGATTTGAAGTC
ATCACAAGAATTGATTTGGGGAAACGCCCTGTTGTTCAAAGGAGAGAACCAGGATCACTGGAAGAATGG
ACTAAGAACATTGATTCTGAAGGAAGAAATTTAAATGTAGATAATATGAAGCAGATGATATTTAGAGGG
GGACTTAGTCATGCATTGAGAAAGCAAGCATGGAAATTTCTTCTGGGTTATTTCCCTGGGACAGTACC
AAGGAGGAAAGAACCAATTACAAAAGCAAAAACACTGATGAATACTTCAGAATGAAACTGCAGTGGAAA
TCCATCAGCCAGGAACAAGAGAAAAAGAAATTCGAGGTTAAGAGATTATAGAAGTCTTATCGAAAAAGAT
GTTAACAGAACAGATCGAACAAACAAGTTTTATGAAGCCAAGATAATCCAGGGTTGATTTTACTTCAT
GACATTTTGATGACCTACTGTATGTATGATTTTGTATTTAGGATATGTTCAAGGAATGAGTGATTTACTT
TCCCTCTTTTATATGTGATGGAAAATGAAGTGGATGCCTTTTGGTGCTTTGCCTCTTACATGGACCAA
ATGCATCAGAATTTTGAAGAACAATGCAAGGCATGAAGACCCAGCTAATTCAGCTGAGTACCTTACTT
CGATTGTTAGACAGTGGATTTTGCAGTTACTTAGAATCTCAGGACTCTGGATACCTTTATTTTGGCTTC
AGGTGGCTTTTAAATCAGATTCAAAGGGAATTTAGTTTTCTAGATATTCTTCGATTATGGGAGGTAATG
TGGACCGAACTACCATGTACAAATTTCCATCTTCTCTGTTGTGCTATTCTGGAATCAGAAAAGCAG
CAAATAATGGAAGCATTATGGCTTCAATGAAATACTTAAGCATATCAATGAATTGTCATGAAAATT
GATGTGGAAGATACTCTGCAAGGCAGAAAGCAATTTCTCTACAGATGGTAAAATGCAAGGAATTGCCA
CAAGCAGTCTGTGAGATCCTTGGGCTTCAAGGCAGTGAAGTTACAACACCAGATTGAGACGTTGGTGAA
GACGAAAATGTTGTCATGACTCCTTGTCTACATCTGCATTTCAAAGTAATGCCTTGCCTACACTCTCT
GCCAGTGGAGCCAGAAATGACAGCCCAACAGATACCAGTGTCTCAGATGTCTGCAGATTAACACCT
GCATGA
ACGCGTACGCGGCCGCTCGAGCAGAACTCATCTCAGAAGAGGATCTGGCAGCAATGATATCCTGGAT
TACAAGGATGACGACGATAAGGTTTAAACGGCCGGC
  
```

Restriction Sites: SgfI-MluI

Plasmid Map:


ACCN: NM_022771

Insert Size: 2076 bp

OTI Disclaimer: Due to the inherent nature of this plasmid, standard methods to replicate additional amounts of DNA in *E. coli* are highly likely to result in mutations and/or rearrangements. Therefore, OriGene does not guarantee the capability to replicate this plasmid DNA. Additional amounts of DNA can be purchased from OriGene with batch-specific, full-sequence verification at a reduced cost. Please contact our customer care team at custsupport@origene.com or by calling 301.340.3188 option 3 for pricing and delivery.

The molecular sequence of this clone aligns with the gene accession number as a point of reference only. However, individual transcript sequences of the same gene can differ through naturally occurring variations (e.g. polymorphisms), each with its own valid existence. This clone is substantially in agreement with the reference, but a complete review of all prevailing variants is recommended prior to use. [More info](#)

OTI Annotation: This TrueClone is provided through our Custom Cloning Process that includes sub-cloning into OriGene's pCMV6 vector and full sequencing to provide a non-variant match to the expected reference without frameshifts, and is delivered as lyophilized plasmid DNA.

Components: The ORF clone is ion-exchange column purified and shipped in a 2D barcoded Matrix tube containing 10ug of transfection-ready, dried plasmid DNA (reconstitute with 100 ul of water).

- Reconstitution Method:**
1. Centrifuge at 5,000xg for 5min.
 2. Carefully open the tube and add 100ul of sterile water to dissolve the DNA.
 3. Close the tube and incubate for 10 minutes at room temperature.
 4. Briefly vortex the tube and then do a quick spin (less than 5000xg) to concentrate the liquid at the bottom.
 5. Store the suspended plasmid at -20°C. The DNA is stable for at least one year from date of shipping when stored at -20°C.

RefSeq: [NM_022771.4](#)

RefSeq Size: 5811 bp

RefSeq ORF: 2076 bp

Locus ID: 64786

UniProt ID: [Q8TC07](#)

Cytogenetics: 12q21.1

Domains: TBC

MW: 79.5 kDa

Gene Summary: This gene encodes a member of the Ras-like proteins in brain-GTPase activating protein superfamily that share a conserved Tre-2/Bub2/Cdc16 domain. The encoded protein interacts with Ras-like protein in brain 5A and may function as a regulator of intracellular trafficking. Alternate splicing results in multiple transcript variants. [provided by RefSeq, Apr 2009]
Transcript Variant: This variant (1) encodes the longest isoform (1). Sequence Note: This RefSeq record was created from transcript and genomic sequence data to make the sequence consistent with the reference genome assembly. The genomic coordinates used for the transcript record were based on transcript alignments.