

Product datasheet for **SC327316**

CD109 (NM_001159587) Human Untagged Clone

Product data:

Product Type:	Expression Plasmids
Product Name:	CD109 (NM_001159587) Human Untagged Clone
Tag:	Tag Free
Symbol:	CD109
Synonyms:	CPAMD7; p180; r150
Mammalian Cell Selection:	Neomycin
Vector:	pCMV6-Entry (PS100001)
E. coli Selection:	Kanamycin (25 ug/mL)
Fully Sequenced ORF:	>SC327316 representing NM_001159587. Blue=Insert sequence Red=Cloning site Green=Tag(s)

```
GCTCGTTTAGTGAACCGTCAGAATTTTGTAAACGACTCACTATAGGGCGGCCGGGAATTCGTGACTG
GATCCGGTACCGAGGAGATCTGCCGCCGCGATCGCC
ATGCAGGGCCACCGCTCCTGACCGCGCCACCTCCTCTGCGTGTGCACCGCCGCGCTGGCCGTGGCT
CCCGGGCCTCGGTTTCTGGTGACAGCCCCAGGGATCATCAGGCCCGGAGGAAATGTGACTATTGGGGTG
GAGCTTCTGGAACACTGCCCTTACAGGTGACTGTGAAGCGGAGCTGCTCAAGACAGCATCAAACCTC
ACTGTCTCTGCTGGAAGCAGAAGGAGTCTTTGAAAAGGCTCTTTAAGACACTTACTCTTCCATCA
CTACCTCTGAACAGTGCAGATGAGATTTATGAGCTACGTGAACCGGACGTACCCAGGATGAGATTTA
TTCTCTAATAGTACCCGTTATCATTGAGACCAAGAGAATATCTGTCTTATTCAAACAGACAAGGCC
TTATACAAGCCAAAGCAAGAAGTGAAGTTTCGCATTGTTACACTTCTCAGATTTTAAGCCTTACAAA
ACCTCTTTAAACATTCTCATTAAAGACCCCAAATCAAATTTGATCCAACAGTGGTTGTCACAACAAAGT
GATCTTGGAGTCAATTTCCAAAATTTTCAGCTATCTTCCCATCCAATACTTGGTACTGGTCTATTCAA
GTTCAAGTGAATGACCAGACATACTATCAATCATTTCAGGTTTCAGAATATGTATTACCAAAATTTGAA
GTGACTTTGCAGACACCATTATATTGTTCTATGAATCTAAGCATTAAATGGTACCATCACGGCAAAG
TATACATATGGGAAGCCAGTGAAGGAGACGTAACGCTTACATTTTTACCTTTTACCTTTTGGGAAAG
AAGAAAAATATTACAAAAACATTTAAGATAAATGGATCTGCAACTTCTCTTTAATGATGAAGAGATG
AAAAATGTAATGGATTCTCAAATGGACTTTCTGAATACCTGGATCTATCTTCCCTGGACCAGTAGAA
ATTTTAACCACAGTGACAGAATCAGTTACAGGATTTTCAAGAAATGTAAGCACTAATGTGTTCTTCAAG
CAACATGATTACATCATTGAGTTTTTTGATTATACTACTGTCTTGAAGCCATCTCTCAACTTCACAGCC
ACTGTGAAGGTAACCTCGTCTGATGGCAACCACTGACTCTTGAAGAAAGAAGAAATAATGTAGTCATA
ACAGTGACACAGAGAACTATACTGAGTACTGGAGCGGATCTAACAGTGGAAATCAGAAAATGGAAGCT
GTTTCAGAAAATAAATTACTGTCCCCAAAGTGGAACTTTAAGATTGAATTTCCAATCCTGGAGGAT
TCCAGTGAGCTACAGTTGAAGGCCTATTTCTTGGTAGTAAAAGTAGCATGGCAGTTCATAGTCTGTTT
AAGTCTCCTAGTAAGACATACATCCAATAAAAAACAAGAGATGAAAATATAAAGGTGGGATCGCCTTTT
GAGTTGGTGGTTAGTGGCAACAAACGATTGAAGGAGTTAAGCTATATGGTAGTATCCAGGGGACAGTTG
```



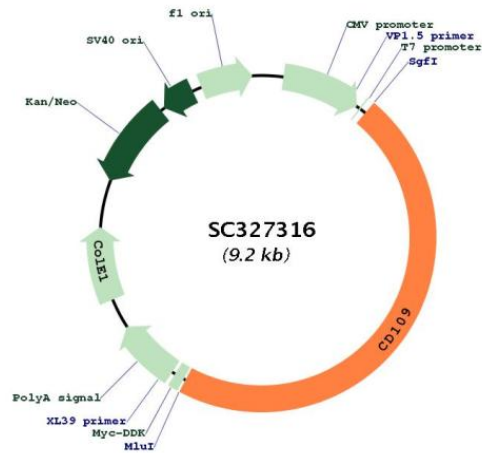
[View online >](#)

GTGGCTGTAGGAAAACAAAATTCACAATGTTCTCTTTAACACCAGAAAATCTTGGACTCCAAAAGCC
 TGTGTAATTGTGTATTATATTGAAGATGATGGGAAATTATAAGTGATGTTCTAAAAATTCCTGTTCAG
 CTTGTTTTTAAAAATAAGATAAAGCTATATTGGAGTAAAGTAAAAGCTGAACCATCTGAGAAAGTCTCT
 CTTAGGATCTCTGTGACACAGCCTGACTCCATAGTTGGGATTGTAGCTGTTGACAAAAGTGTGAATCTG
 ATGAATGCCTCTAATGATATTACAATGGAAAATGTGGTCCATGAGTTGGAACCTTTATAACACAGGATAT
 TATTTAGGCATGTTTCATGAATCTTTTGCAGTCTTTCCAGGAATGTGGACTCTGGGTATTGACAGATGCA
 AACCTCAGGAAGGATTATATTGATGGTGTATGACAATGCAGAATATGCTGAGAGGTTTTATGGAGGAA
 AATGAAGGACATATTGTAGATATTCATGACTTTTTCTTTGGGTAGCAGTCCACATGTCGAAAGCATT
 CCAGAGACTTGGATTTGGCTAGACACCAACATGGGTTACAGGATTTACCAAGAATTTGAAGTAACTGTA
 CCTGATTCTATCACTTCTTGGGTGGCTACTGGTTTTGTGATCTCTGAGGACCTGGGTCTTGGACTAACA
 ACTACTCCAGTGGAGCTCCAAGCCTTCCAACCTTTTTTCATTTTTTGAATCTTCCCTACTCTGTTATC
 AGAGGTGAAGAATTTGCTTTGAAATAACTATATTCAATTATTTGAAAGATGCCACTGAGGTTAAGGTA
 ATCATTGAGAAAAGTGACAAATTTGATATTCTAATGACTTCAAATGAAATAAATGCCACAGGCCACCAG
 CAGACCCTTCTGGTTCCAGTGAGGATGGGGCAACTGTTCTTTTCCCATCAGGCCAACACATCTGGGA
 GAAATTCCTATCACAGTCACAGTCTTTTCAACCCACTGCTTCTGATGCTGTCAACCCAGATGATTTTAGTA
 AAGGCTGAAGGAATAGAAAAATCATATTCACAATCCATCTTATTAGACTTGACTGACAATAGGCTACAG
 AGTACCCTGAAAACCTTTGAGTTTCTCATTTCTCCTAATACAGTGACTGGCAGTGAAGAGTTTCAGATC
 ACTGCAATTGGAGATGTTCTTGGCTCTTCCATCAATGGCTTAGCCTCATTGATTCGGATGCCTTATGGC
 TGTGGTGAACAGAACATGATAAATTTTGTCCAAATATTTACATTTTGGATTATCTGACTAAAAAGAAA
 CAACTGACAGATAATTTGAAAGAAAAGCTCTTTCATTTATGAGGCAAGGTTACCAGAGAGAACTTCTC
 TATCAGAGGGAAGATGGCTCTTTCAGTGCTTTTGGGAATTATGACCCTTCTGGGAGCACTTGGTTGTCA
 GCTTTTGTTTTAAAGATGTTTCTTGAAGCCGATCCTTACATAGATATTGATCAGAATGTGTTACACAGA
 ACATACACTTGGCTTAAAGGACATCAGAAATCCAACGGTGAATTTTGGGATCCAGGAAGAGTGATTCAT
 AGTGAGCTTCAAGGTGGCAATAAAAGTCCAGTAAACACTTACAGCCTATATTGTAACCTCTCTCCTGGGA
 TATAGAAAAGTATCAGCCTAACATTGATGTGCAAGAGTCTATCCATTTTTTGGAGTCTGAATTCAGTAGA
 GGAATTTTACAGACAATTATACTCTAGCCCTTATAACTTATGCATTGTCATCAGTGGGAGTCTTAAAGCG
 AAGGAAGCTTTGAATATGCTGACTTGGAGAGCAGAAACAAGAAGGTGGCATGCAATTTCTGGGTGTCATCA
 GAGTCCAAACTTTCTGACTCCTGGCAGCCACGCTCCCTGGATATTGAAGTGCAGCCTATGCACTGCTC
 TCACACTTCTTACAATTTAGACTTCTGAGGGAATCCCAATTATGAGGTGGCTAAGCAGGCAAAGAAAT
 AGCTTGGGTGGTTTTGCATCTACTCAGGATACCACTGTGGCTTTAAAGGCTCTGTCTGAATTTGCAGCC
 CTAAATGAATACAGAAAGGACAAATATCCAAGTGACCGTGACGGGCTAGCTACCAAGTCTCTTGTCT
 GTGGTACAGCCAACGGCAGTTAATATTTCCGCAATGTTTTGGATTTGCTATTTGTGAGCTCAATGTT
 GTATATAATGTGAAGGCTTCTGGGTCTTCTAGAAGACGAAGATCTATCCAAAATCAAGAAGCCTTTGAT
 TTAGATGTTGCTGTAAGAAAATAAAGATGATCTCAATCATGTGGATTTGAATGTGTGTACAAGCTTT
 TCGGGCCCGGTAGGAGTGGCATGGCTCTTATGGAAGTTAACCTATTAAGTGGCTTTATGGTGCCTTCA
 GAAGCAATTTCTGAGCGAGACAGTGAAGAAAGTGAATATGATCATGGAAAATCAACCTCTATTTA
 GATTCTGTAATGAAACCCAGTTTTGTGTTAATATTTCTGCTGTGAGAACTTTAAAGTTCAAATACC
 CAAGATGCTTCAGTGCCATAGTGGATTACTATGAGCCAAGGAGACAGGCGGTGAGAAGTTACAACCTCT
 GAAGTGAAGCTGTCTCTGTGACCTTTGCAGTGATGTCCAGGGCTGCCGCTCTTGTGAGGATGGAGCT
 TCAGGCTCCCATCACTCTTCAGTCATTTTTATTTCTGTTTCAAGCTTCTGTACTTTATGAACTT
 TGGCTGTGA
 ACGCGTACGCGGCCGCTCGAGCAGAACTCATCTCAGAAGAGGATCTGGCAGCAATGATATCCTGGAT
 TACAAGGATGACGACGATAAGGTTTAAACGGCCGGC

Restriction Sites:

Sgfl-Mlul

Plasmid Map:



ACCN: NM_001159587

Insert Size: 4287 bp

OTI Disclaimer: Our molecular clone sequence data has been matched to the reference identifier above as a point of reference. Note that the complete sequence of our molecular clones may differ from the sequence published for this corresponding reference, e.g., by representing an alternative RNA splicing form or single nucleotide polymorphism (SNP).

OTI Annotation: This TrueClone is provided through our Custom Cloning Process that includes sub-cloning into OriGene's pCMV6 vector and full sequencing to provide a non-variant match to the expected reference without frameshifts, and is delivered as lyophilized plasmid DNA.

Components: The ORF clone is ion-exchange column purified and shipped in a 2D barcoded Matrix tube containing 10ug of transfection-ready, dried plasmid DNA (reconstitute with 100 ul of water).

Reconstitution Method:

1. Centrifuge at 5,000xg for 5min.
2. Carefully open the tube and add 100ul of sterile water to dissolve the DNA.
3. Close the tube and incubate for 10 minutes at room temperature.
4. Briefly vortex the tube and then do a quick spin (less than 5000xg) to concentrate the liquid at the bottom.
5. Store the suspended plasmid at -20°C. The DNA is stable for at least one year from date of shipping when stored at -20°C.

RefSeq: [NM_001159587.2](#)

RefSeq Size: 9119 bp

RefSeq ORF: 4287 bp

Locus ID: 135228

UniProt ID: [Q6YHK3](#)

Cytogenetics: 6q13

MW: 159.7 kDa

Gene Summary: This gene encodes a glycosyl phosphatidylinositol (GPI)-linked glycoprotein that localizes to the surface of platelets, activated T-cells, and endothelial cells. The protein binds to and negatively regulates signalling by transforming growth factor beta (TGF-beta). Multiple transcript variants encoding different isoforms have been found for this gene. [provided by RefSeq, Apr 2014]
Transcript Variant: This variant (2) uses an alternate in-frame splice site, compared to variant 1. The resulting isoform (2) is shorter than isoform 1.