

## Product datasheet for SC327312

### CD109 (NM\_001159588) Human Untagged Clone

#### Product data:

Product Type:	Expression Plasmids
Product Name:	CD109 (NM_001159588) Human Untagged Clone
Tag:	Tag Free
Symbol:	CD109
Synonyms:	CPAMD7; p180; r150
Mammalian Cell Selection:	Neomycin
Vector:	pCMV6-Entry (PS100001)
E. coli Selection:	Kanamycin (25 ug/mL)
Fully Sequenced ORF:	>SC327312 representing NM_001159588. Blue=Insert sequence Red=Cloning site Green=Tag(s)

```
GCTCGTTTGTAGTGAACCGTCAGAATTTTGTAAACGACTCACTATAGGGCGGCCGGGAATTCGTGACTG
GATCCGGTACCGAGGAGATCTGCCGCCGCGATCGCC
ATGCAGGGCCACCGCTCCTGACCGCGCCACCTCCTCTGCGTGTGCACCGCCGCGCTGGCCGTGGCT
CCCGGGCCTCGGTTTCTGGTGACAGCCCGAGGATCATCAGGCCCGGAGGAAATGTGACTATTGGGGTG
GAGCTTCTGGAACACTGCCCTTACAGGTGACTGTGAAGCGGAGCTGCTCAAGACAGCATCAAACCTC
ACTGTCTCTGCTGGAAGCAGAAGGAGTCTTTGAAAAAGGCTCTTTTAAGACACTTACTCTTCCATCA
GACCCCAATCAAATTTGATCCAACAGTGGTTGCACAACAAAGTATCTGGAGTCATTCCAAAACCT
TTTCAGCTATCTCCCATCCAATACTTGGTGACTGGTCTATTCAAGTTCAAGTGAATGACCAGACATAC
TATCAATCATTTAGGTTTCAGAATATGTATTACCAAAATTTGAAGTACTTTGCAGACACCATTATAT
TGTTCTATGAATTCCTAAGCATTTAAATGGTACCATCACGGCAAAGTATACATATGGGAAGCCAGTGAAA
GGAGACGTAACGCTTACATTTTTACCTTTATCCTTTTGGGAAAGAAAGAAAAATATTACAAAAACATTT
AAGATAAATGGATCTGCAAACTTCTCTTTAATGATGAAGAGATGAAAAATGTAATGGATTCTTCAAAT
GGACTTTCTGAATACCTGGATCTATCTCCCTGGACAGTAGAAATTTAACCACAGTGACAGAATCA
GTTACAGGTATTTCAAGAAATGTAAGCACTAATGTGTTCTTCAAGCAACATGATTACATCATTGAGTTT
TTTGATTATACTACTGTCTTGAAGCCATCTCTCAACTTCACAGCCACTGTGAAGGTAACCTGTGCTGAT
GGCAACCACTGACTCTTGAAGAAAGAAGAAATATGTAGTCATAACAGTGACACAGAGAAACTATACT
GAGTACTGGAGCGGATCTAACAGTGAAATCAGAAAAATGGAAGCTGTTTCAGAAAAATAAATTATACTGTC
CCCCAAAGTGAACTTTTAAGATTGAATTCCTCAATCCTGGAGGATTCCAGTGAGCTACAGTTGAAGGCC
TATTTCTTGGTAGTAAAAGTAGCATGGCAGTTTATAGTCTGTTTAAAGTCTCCTAGTAAAGACATACATC
CAACTAAAAACAAGAGATGAAAAATAAAGGTGGGATCGCCTTTTGGAGTTGGTGGTTAGTGGCAACAAA
CGATTGAAGGAGTTAAGCTATATGGTAGTATCCAGGGACAGTTGGTGGCTGTAGGAAAAACAAAATTCA
ACAATGTTCTCTTTAACACCAGAAAATCTTGGACTCCAAAAGCCTGTGTAATTGTGATTATATTGAA
GATGATGGGAAATTATAAGTATGTTCTAAAAATTCCTGTTTCAGCTTGTTTTTAAAAATAAGATAAAG
CTATATTGGAGTAAAGTGAAGCTGAACCATCTGAGAAAGTCTCTTAGGATCTCTGTGACACAGCCT
```

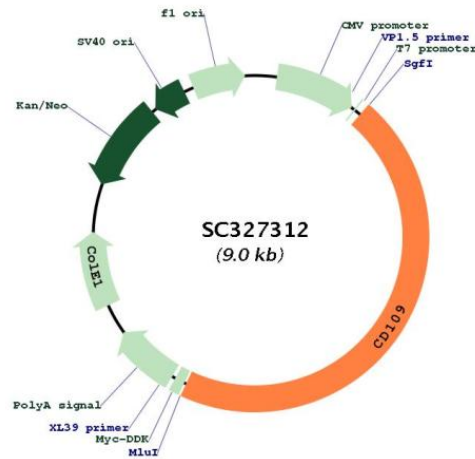


[View online »](#)

GACTCCATAGTTGGGATTGTAGCTGTTGACAAAAGTGTGAATCTGATGAATGCCTCTAATGATATTACA  
ATGGAAAATGTGGTCCATGAGTTGGAACCTTTATAACACAGGATATTATTTAGGCATGTTTCAATGATTCT  
TTTGCAGTCTTTTACAGGAATGTGGACTCTGGGATTGACAGATGCAAACCTCACGAAGGATTATATTGAT  
GGTGTATGACAATGCAGAATATGCTGAGAGGTTTATGGAGGAAAATGAAGGACATATTGTAGATATT  
CATGACTTTTCTTTGGGTAGCAGTCCACATGTCCGAAAGCATTTTCCAGAGACTTGGATTGGCTAGAC  
ACCAACATGGGTTACAGGATTTACCAAGAATTTGAAGTAACTGTACCTGATTCTACTCTTCTTTGGGTG  
GCTACTGGTTTTGTGATCTCTGAGGACCTGGGTCTTGGACTAACAACTACTCCAGTGGAGCTCCAAGCC  
TTCCAACCATTTTTTCATTTTTTTGAATCTTCCCTACTCTGTTATCAGAGGTGAAGAATTTGCTTTGGAA  
ATAACTATATTCAATTATTTGAAAGATGCCACTGAGGTTAAGGTAATCATTGAGAAAAGTACAAAATTT  
GATATTCTAATGACTTCAAATGAAATAAATGCCACAGGCCACCAGCAGACCCCTTCTGGTCCCAGTGAG  
GATGGGGCAACTGTTCTTTTCCATCAGGCCAACACATCTGGGAGAAAATCCTATCACAGTACAGCT  
CTTTCACCCACTGCTTCTGATGCTGTACCCAGATGATTTTAGTAAAGGCTGAAGGAATAGAAAAATCA  
TATTCACAATCCATCTTATTAGACTTGACTGACAAATAGGCTACAGAGTACCCTGAAAATTTGAGTTTC  
TCATTTCTCCTAATACAGTACTGGCAGTGAAGAGTTCAGATCACTGCAATTGGAGATGTTCTGGT  
CCTTCCATCAATGGCTTAGCCTCATTGATTCGGATGCCTTATGGCTGTGGTGAACAGAACATGATAAT  
TTTGCTCCAAATATTTACATTTTGGATTATCTGACTAAAAAGAAAACAACCTGACAGATAATTTGAAAGAA  
AAAGCTCTTTTATTTATGAGGCAAGGTTACCAGAGAGAATTTCTCTATCAGAGGGAAGATGGCTCTTTC  
AGTGCTTTTGGGAATTATGACCCCTTCTGGGAGCACTTGGTTGTCAGCTTTTGTTTAAGATGTTTCCCT  
GAAGCCGATCCTTACATAGATATTGATCAGAATGTGTTACACAGAACATACACTTGGCTTAAAGGACAT  
CAGAAAATCCAACGGTGAATTTTGGGATCCAGGAAGAGTGATTCATAGTGAGCTTCAAGGTGGCAATAAA  
AGTCCAGTAACACTTACAGCCTATATTGTAACCTCTCTCTGGGATATAGAAAATATCAGCCTAACATT  
GATGTGCAAGAGTCTATCCATTTTTTGGAGTCTGAATTCAGTACAGGAATTTAGACAATTATACTCTA  
GCCCTTATAACTTATGCATTGTATCAGTGGGGAGTCTAAAGCGAAGGAAGCTTTGAATATGCTGACT  
TGGAGAGCAGAAACAAGAAGGTGGCATGCAATTTCTGGGTGTCATCAGAGTCCAAACTTTCTGACTCCTGG  
CAGCCACGCTCCCTGGATATTGAAGTTGACGCTATGCACTGCTCTCACACTTCTTACAATTTAGACT  
TCTGAGGGAATCCCAATTATGAGGTGGCTAAGCAGGCAAAGAAAATAGCTTGGGTGGTTTTGCATCTACT  
CAGGATACCCTGTGGCTTAAAGGCTCTGTCTGAATTTGACGCCCTAATGAATACAGAAAGGACAAAT  
ATCCAAGTGACCGTGACGGGCCCTAGCTCACCAAGTCTGTAAAGTTTCTGATTGACACACACAACCGC  
TTACTCCTTACAGACAGCAGACTTGTGTGGTACAGCCAACGGCAGTTAATATTTCCGCAATGGTTTT  
GGATTTGCTATTTGTGAGCTCAATGTTGTATATAATGTGAAGGCTTCTGGGTCTTCTAGAAGACGAAGA  
TCTATCCAAAATCAAGAAGCCTTTGATTTAGATGTTGCTGTAAAAGAAAATAAAGATGATCTCAATCAT  
GTGGATTTGAATGTGTGTACAAGCTTTTCGGGCCCGGTAGGAGTGGCATGGCTCTTATGGAAGTTAAC  
CTATTAAGTGGCTTTATGGTGCCTTCAAGCAATTTCTCTGAGCGAGACAGTGAAGAAAAGTGAATAT  
GATCATGGAAAATCAACCTCTATTTAGATTCTGTAATGAAACCCAGTTTTGTGTTAATATTTCTGCT  
GTGAGAACTTTAAAGTTTCAAATACCCAAGATGCTTCAAGTGTCCATAGTGGATTACTATGAGCCAAGG  
AGACAGGCGGTGAGAAGTTACAACCTCTGAAGTGAAGCTGTCTCTGTGACCTTTGACAGTGTGCCAG  
GGCTGCCGTCTTGTGAGGATGGAGCTTACAGCTCCCATCATCACTCTTTCAGTCATTTTATTTTCTGT  
TTCAAGCTTCTGTACTTTATGGAATTTGGCTGTGA  
ACGCGTACGCGGCCGCTCGAGCAGAACTCATCTCAGAAGAGGATCTGGCAGCAAATGATATCCTGGAT  
TACAAGGATGACGACGATAAGGTTTAAACGGCCCGC

Restriction Sites:

SgfI-MluI

**Plasmid Map:**


**ACCN:** NM\_001159588

**Insert Size:** 4107 bp

**OTI Disclaimer:** Our molecular clone sequence data has been matched to the reference identifier above as a point of reference. Note that the complete sequence of our molecular clones may differ from the sequence published for this corresponding reference, e.g., by representing an alternative RNA splicing form or single nucleotide polymorphism (SNP).

**OTI Annotation:** This TrueClone is provided through our Custom Cloning Process that includes sub-cloning into OriGene's pCMV6 vector and full sequencing to provide a non-variant match to the expected reference without frameshifts, and is delivered as lyophilized plasmid DNA.

**Components:** The ORF clone is ion-exchange column purified and shipped in a 2D barcoded Matrix tube containing 10ug of transfection-ready, dried plasmid DNA (reconstitute with 100 ul of water).

**Reconstitution Method:**

1. Centrifuge at 5,000xg for 5min.
2. Carefully open the tube and add 100ul of sterile water to dissolve the DNA.
3. Close the tube and incubate for 10 minutes at room temperature.
4. Briefly vortex the tube and then do a quick spin (less than 5000xg) to concentrate the liquid at the bottom.
5. Store the suspended plasmid at -20°C. The DNA is stable for at least one year from date of shipping when stored at -20°C.

**RefSeq:** [NM\\_001159588.2](#)

**RefSeq Size:** 8939 bp

**RefSeq ORF:** 4107 bp

**Locus ID:** 135228

**UniProt ID:** [Q6YHK3](#)

**Cytogenetics:** 6q13

**MW:** 152.7 kDa

**Gene Summary:** This gene encodes a glycosyl phosphatidylinositol (GPI)-linked glycoprotein that localizes to the surface of platelets, activated T-cells, and endothelial cells. The protein binds to and negatively regulates signalling by transforming growth factor beta (TGF-beta). Multiple transcript variants encoding different isoforms have been found for this gene. [provided by RefSeq, Apr 2014]

Transcript Variant: This variant (3) lacks an alternate in-frame exon in the 5' coding region, compared to variant 1. The resulting isoform (3) is shorter than isoform 1.