

## Product datasheet for **SC326182**

### APLP2 (NM\_001142277) Human Untagged Clone

#### Product data:

Product Type:	Expression Plasmids
Product Name:	APLP2 (NM_001142277) Human Untagged Clone
Tag:	Tag Free
Symbol:	APLP2
Synonyms:	APLP-2; APPH; APPL2; CDEBP
Mammalian Cell Selection:	Neomycin
Vector:	pCMV6-Entry (PS100001)
E. coli Selection:	Kanamycin (25 ug/mL)



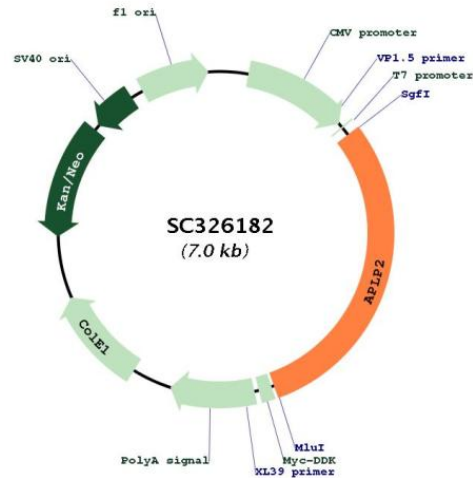
[View online »](#)

**Fully Sequenced ORF:** >SC326182 representing NM\_001142277.  
 Blue=Insert sequence Red=Cloning site Green=Tag(s)

```

GCTCGTTTAGTGAACCGTCAGAATTTTGTAAACGACTCACTATAGGGCGGCCGGGAATTCGTGACTG
GATCCGGTACCGAGGAGATCTGCCGCCCGGATCGCC
ATGGCGGCCACCGGGACCGCGGCCCGCCAGCCACGGGCAGGCTCCTGCTCTGCTGCTGGTGGGGCTC
ACGGCGCCTGCCTTGGCGCTGGCCGGCTACATCGAGGCTCTTGCAGCCAATGCCGGAACAGGATTTGCT
GTTGCTGAGCCTCAAATCGCAATGTTTTGTGGGAAGTTAAATATGCATGTGAACATTAGACTGGGAAA
TGGAACTGATCCAACAGGCACCAAGAGCTGCTTTGAAACAAAAGAAGAAGTTCTTCAGTACTGTCAG
GAGATGTATCCAGAGCTACAGATCACAAATGTGATGGAGGCAAACCAGCGGGTTAGTATTGACAACCTGG
TGCCGGAGGGACAAAAGCAATGCAAGAGTCGCTTTGTTACACCTTTCAAGTGTCTCGTGGGTGAATTT
GTAAGTGTATGTCCTGCTAGTTCCAGAAAAGTGCCAGTTTTTCCACAAAGAGCGGATGGAGGTGTGTGAG
AATCACCAGCACTGGCACACGGTAGTCAAAGAGGCATGTCTGACTCAGGGAATGACCTTATATAGCTAC
GGCATGCTGCTCCATGTGGGTAGACCAGTTCATGGCACTGAATATGTGTGCTGCCCTCAGACAAAG
ATTATTGGATCTGTGTCAAAAGAAGAGGAAGGAAGTGAAGAGGAAGGAAGAGGAAGTGAAGAG
GAAGACTATGATGTTTATAAAAGTGAATTTCTACTGAAGCAGATCTGGAAGACTTCACAGAAGCAGCT
GTGGATGAGGATGATGAGGATGAGGAAGAAGGGGAGGAAGTGGTGGAGGACCGAGATTACTACTATGAC
ACCTTCAAAGGAGATGACTACAATGAGGAGAATCCTACTGAACCCGGCAGCGACGGCACCATGTCAGAC
AAGGAAATTAATCATGATGTCAAAGTTCCTCCAACCTCCTCGCAACCAATGATGTTGATGTGATTTTC
GAGACCTCTGCAGATGATAATGAGCATGCTCGCTTCCAGAAGGCTAAGGAGCAGCTGGAGATTCGGCAC
CGCAACCGAATGGACAGGGTAAAGAAGGAATGGGAAGAGGCAGAGCTTCAAGCTAAGAACCTCCCCAAA
GCAGAGAGGCAGACTCTGATTCAGCACTTCCAAGCCATGGTTAAAGCTTTAGAGAAGGAAGCAGCCAGT
GAGAAGCAGCAGCTGGTGGAGACCCACCTGGCCGAGTGAAGCTATGCTGAATGACCGCGTGGATG
GCTCTGGAGAACCTACCTGGCTGCCTTGCACTGACCCGCCACGGCCTCATCGCATTCTCCAGGCCTTA
CGGCGTTATGTCCTGCTGAGAACAAGATCGCTTACATACCATCCGTCATTACCAGCATGTGTTGGCT
GTTGACCCAGAAAAGCGGCCAGATGAAATCCCAGGTGATGACACATCTCCACGTGATTGAAGAAAGG
AGGAACCAAGCCTCTCTGCTCTACAAAGTACCTTATGTAGCCCAAGAAATCAAGAGGAAATGAT
GAGCTCCTTCAGGAGCAGCGTGCAGATATGGACCAGTTCCTGCTCAATCTCAGAGACCCCTGTGGAC
GTCCGGGTGAGCTCTGAGGAGAGTGAGGAGATCCACCGTTCACCCCTTCCACCCCTTCCAGCCCTA
CCTGAGAACGAAGGATCTGGAGTGGGAGAGCAGGATGGGGGACTGATCGGTGCCGAAGAGAAAGTATT
AACAGTAAAGTAAAGTGGATGAAAACATGGTCATTGACGAGACTCTGGATGTTAAGGAAATGATTTTC
AATGCCGAGAGAGTTGGAGGCCTCGAGGAAGAGCGGGAATCCGTGGGCCACTGCCGGGAGGACTTCACT
CTGAGTAGCAGTCTCATTGGCTGCTGGTATCGCAGTGGCCATTGCCACGGTCATCGTCATCAGC
CTGGTGTGCTGAGGAAGAGGCAGTATGGCACCATCAGCCACGGGATCGTGGAGGTTGATCCAATGCTC
ACCCAGAAAGAGCGTACCTGAACAAGATGCAGAACCATGGCTATGAGAACCCACCTACAAATACCTG
GAGCAGATGCAGATTAG
ACGCGTACGCGGCCGCTCGAGCAGAACTCATCTCAGAAGAGGATCTGGCAGCAAATGATATCCTGGAT
TACAAGGATGACGACGATAAGGTTTAAACGGCCGGC
  
```

**Restriction Sites:** SgfI-MluI

**Plasmid Map:**


**ACCN:** NM\_001142277

**Insert Size:** 2088 bp

**OTI Disclaimer:** Our molecular clone sequence data has been matched to the reference identifier above as a point of reference. Note that the complete sequence of our molecular clones may differ from the sequence published for this corresponding reference, e.g., by representing an alternative RNA splicing form or single nucleotide polymorphism (SNP).

**OTI Annotation:** This TrueClone is provided through our Custom Cloning Process that includes sub-cloning into OriGene's pCMV6 vector and full sequencing to provide a non-variant match to the expected reference without frameshifts, and is delivered as lyophilized plasmid DNA.

**Components:** The ORF clone is ion-exchange column purified and shipped in a 2D barcoded Matrix tube containing 10ug of transfection-ready, dried plasmid DNA (reconstitute with 100 ul of water).

**Reconstitution Method:**

1. Centrifuge at 5,000xg for 5min.
2. Carefully open the tube and add 100ul of sterile water to dissolve the DNA.
3. Close the tube and incubate for 10 minutes at room temperature.
4. Briefly vortex the tube and then do a quick spin (less than 5000xg) to concentrate the liquid at the bottom.
5. Store the suspended plasmid at -20°C. The DNA is stable for at least one year from date of shipping when stored at -20°C.

**RefSeq:** [NM\\_001142277.1](#)

**RefSeq Size:** 3623 bp

**RefSeq ORF:** 2088 bp

**Locus ID:** 334

**UniProt ID:** [Q06481](#)

**Cytogenetics:** 11q24.3

**Protein Families:** Druggable Genome, Transmembrane

**MW:** 79.2 kDa

**Gene Summary:** This gene encodes amyloid precursor- like protein 2 (APLP2), which is a member of the APP (amyloid precursor protein) family including APP, APLP1 and APLP2. This protein is ubiquitously expressed. It contains heparin-, copper- and zinc- binding domains at the N-terminus, BPTI/Kunitz inhibitor and E2 domains in the middle region, and transmembrane and intracellular domains at the C-terminus. This protein interacts with major histocompatibility complex (MHC) class I molecules. The synergy of this protein and the APP is required to mediate neuromuscular transmission, spatial learning and synaptic plasticity. This protein has been implicated in the pathogenesis of Alzheimer's disease. Multiple alternatively spliced transcript variants encoding different isoforms have been identified. [provided by RefSeq, Aug 2011]

Transcript Variant: This variant (3) lacks two in-frame exons in the coding region, compared to variant 1. It encodes isoform 3 which lacks two internal segments, compared to isoform 1.