

Product datasheet for **SC318571**

TBC1D32 (NM_152730) Human Untagged Clone

Product data:

Product Type:	Expression Plasmids
Product Name:	TBC1D32 (NM_152730) Human Untagged Clone
Tag:	Tag Free
Symbol:	TBC1D32
Synonyms:	BROMI; C6orf170; C6orf171
Mammalian Cell Selection:	Neomycin
Vector:	pCMV6-Entry (PS100001)
E. coli Selection:	Kanamycin (25 ug/mL)
Fully Sequenced ORF:	>SC318571 representing NM_152730. Blue=Insert sequence Red=Cloning site Green=Tag(s)

```
GCTCGTTTGTAGTGAACCGTCAGAATTTTGTAAACGACTCACTATAGGGCGCCGGGAATTCGTCGACTG
GATCCGGTACCGAGGAGATCTGCCGCCGCGATCGCC
ATGGCCATTTCTCCAGCGAGGACCAGGCGATGCTGCAGGCGATGCTGAGGCGGTTGTTCCAGAGCGTG
AAGGAGAAAAATCACGGGTGCCCTTCCCTGGAGTGTGCCGAAGAGATTCTTTTACATCTGGAGGAAACT
GATGAAAAATTTCAACTATGAATTTGTGAAATACCTCAGGCAGCATATAGGCAACACTTTGGTTCT
ATGATTGAAGAAGAAATGAAAAATGCACATCTGATCGGAATCAGGGTGAAGAATGCGGCTATGATACA
GTTGTACAGCAGGTCCTAAAAGAACTCAAGAATCTAAAGAGTACAAAGAAATGATGCATTACCTGAAG
AACATTATGATAGCTGTGGTCGAGTCTATGATTAACAAGTTTGAAGAAGATGAGACACGAAATCAAGAA
AGGCAGAAAAAATCCAAAAGGAGAAAAAGCCATAGTTACCGCACAGACAATTGCTCTGATAGTGATTCA
TCATTGAATCAGAGTTACAAATTTGTCAAGGAAAATTACAATTGATTTTAGACCAGTTGGATCCTGGG
CAACCTAAAGAGGTGAGATATGAAGCCTTGCAACATTATGTTACAGTCCCTCCATCTGATGTCCTCAAC
TGTGAAAATTGGACTACTCTCTGCGAAAAACTGACCGTGTCTCTTTCAGATCCTGATCCTGTGTTTGTG
GACCGGATTTTAAAATCTGTGCACAGACATTTTGTCTTCTCCATTACATATGACCAAGGAAATTTAT
ACAAGCTTAGCTAAGTATTTGGAGTCATACTTTCTTTCTAGGGAAAAATCATATTCCTACTCTTTGAGCT
GGTGTAGATATAACTAATCCTAATATGACTCGCTTACTTAAAAAGTTTCGTCTTCTAAATGAATATCAG
AAAGAAGCTCCATCTTTCTGGATTCGTCATCCAGAGAAGTATGGAAGAAATTTGGAGAGTACTTTG
TCCTTGTTAACAGTTAAACATAATCAAAGCCATGTTGTCTCACAAAAGATTTTGGATCCGATCTACTTT
TTTGCATTAGTTGATACCAAGGCTGTGTGGTTCAAAAAGTGGATGCATGCACATTATAGCAGAACTACA
GTATTAAGACTTCTTGAACGAAATATAAGTCTCTGGTAACTACAGCCATTCAACAGTGTGTTTCAGTAC
TTTGAAATGTGTAAGACTAGGAAAGCTGATGAACTTTGGGACATTCAAAGCATTGCAGAAAACAAGCAG
AAAATTTCTACTACTTAGGACAAGAATTACAATATATTTATTTTCACTCACTGTGCCTTTTAGGA
AGATTATTGATCTATAACAAGGCAGAAAATTTTCTATTAAGCTGAAGAATAAAAAAGGTTTGGTA
TCCCTCATAGATCTGCTTGTCTTTTACCAACTTATCTATTACTACCAAGTTGTCAAAGATGACA
TCAGCTGCCATTACAGAAATTACTCTCTGCAAGTATGGTACTGAAGTCTGTGGATACTCAGTGAT
```

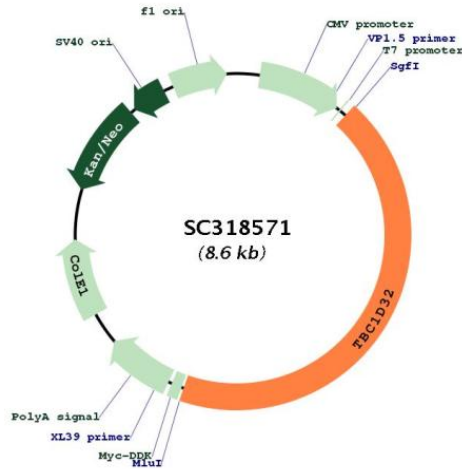


[View online >](#)

CAAAAAGAAATGTGCAGTGAATGCTTATATAAACAAATTGTAATAGAGACACTTCTTCAGCCTATTAC
 AATTTAATGAAAGGAAATGAGGCATCTCCAAATTGCTCTGAGACAGCTTTAATTCATATAGCTGGTATT
 TTGGCAAGAAATTCATCTGTAGAAGAAGGGCTTATTTACTCCTTTATGGAGCAAATATGAACTCTTCT
 GAAGAAAGTCTACAGGTGCTCATATAATTGCCAGTTTTCGAAAAAATCTCGATGAAGATATTTCT
 ATATTTCTGGATCAGAAATGTTGCCTGTGGTTAAAGGAGCTTTTATTTCTGTGTGTCGCACATATAT
 AGTACATGTGAAGTTCAGAGTAACTACTTATAATTTGCATGAATCTATAGCAAAGGCATGGAAA
 AAGACAAGTTTGCTATCAGAAAGAAATTCCTACTCCAGTAGAGGGTCTGATTCTGTTTCTCAGTAAGC
 CAGGAATCCCAAACATTATGGCTTGGGAAGATAATTTGTTAGATGATTTACTACATTTTGCTGCCACC
 CCCAAAGGATTACTACTTCTTCAAAGAACAGGTGCTATCAATGAATGTGTGACATTTATATTCAATCGA
 TATGCAAAAAAATTACAGGTGAGCAGGCATAAAAAATTTGGCTATGGAGTTTGGTTACACGAGTGGCA
 TCAACAGCAGCAGGTGGCATTGCACTAAAAAGTCAGGGTTTATTAATGAACTTAACTGAATTATGG
 TCCAATCTGGAATATGGAAGAGATGATGTTAGGGTAACCCATCCCAGAACTACTCCAGTGGATCCTATT
 GACCGAAGCTGTCAAAGTCTTTTTAGCACTGGTGAACCTGTTATCCTATCCTGCTATTTATGAGCTT
 GTAAGGAATCAAGATCTTCTAATAAAACAGAATATTCTCTCGTGAAGTCCCAACATGTGTTATTGAT
 ATTATTGATAGACTTATAATTTGAATTCTGAAGCTAAGATTCGTTCTTTATTCAACTATGAACAATCA
 CATATCTTTGGTCTAAGGCACTTTATAATTGATGGCTTATCAGTGGAGAGAAATCATGTTCTTGTTAGA
 ATAAATCTTGGTGGGCCATTGGAACGGATTTTGCCTCCGAGGTTACTCGAAAAGAGTGATAATCCA
 TATCCTTGGCCAATGTTTTATCATATCCATTGCCAAACTGCTATCTGTGACAGATTACAAGAAATGCT
 GGTATAAAACAAGACAATGATCTTGACAAGCTTTTATTATGCCTCAAAATATCTGATAAACAAACTGAA
 TGGATAGAAAACAGCAAGCAATTTTGCAAAATGATGAAAGCCAAACCTGATATAATCAGTGGAGAG
 GCCTTAATAGAATTACTTGA AAAATTTGTGCTTCATCTCACTGAAAGCCCATCTGAATGCTACTTCCCT
 TCAGTGGAGTATACAGCTACTGATGCAAATGTGAAGAATGAAAGTCTTTCATCTGTGACAGCAGCTTGGC
 ATTA AAAATGACTGTGAGTATGGCAAATTCCTCAGTCTCTTAAAAGATGGTGCAGAAAATGATCTTACC
 TGGGTTTTAAAGCATTGTGAGAGATTCCTGAAACAGCAGCAAACCTCCATAAAATCTTCTTCTGTC
 CTGCAAGGGAATTATGCTGGCCATGACTGGTTGTATCTTCTCTGTTTCATGATAATGTTGGGAGACAAA
 GAAAAACATTCCAATTTCTTCAATTTCTCCAGGCTTCTGACTTCTGCTTTTCTTTGGTTGCCAAGG
 CTACATATTTCTAGTTACCTTCCATGACACTGTAGAATCTGGCATCCATCCAGTATATTTTGCAGC
 ACCATTATATTGAAATGCTACTGAAGGCTGAGTTGCCTCTTGTGTTTTAGCTTTTACATGTCTGGT
 TTTGCACCATCACAGATTTGCCTGCAATGGATAACCCAGTGTGTTTTGGAATTA CTAGATTGGATAGAA
 ATCTGCCATTATATTGCTACTTGTGTTTTCTTGGTCTGATTATCAAGTGTATATCTGTATAGCTGTA
 TTCAAACATTTACAGCAAGACATTCTACAGCACACTCAGACTCAAGATCTGCAAGTTTTCTAAAAGAA
 GAAGCACTGCATGGGTTTCGAGTGAAGTATTTTTGAATACATGGAAATTTTGGAAACAAACTACCGA
 ACAGTGTGCTGAGAGACATGCGGAACATTAGACTGCAGAGCACATAG
 ACGCGTACGCGGCCGCTCGAGCAGAACTCATCTCAGAAGAGGATCTGGCAGCAAATGATATCCTGGAT
 TACAAGGATGACGACGATAAGGTTTAAACGGCCGGC

Restriction Sites:

Sgfl-Mlul

Plasmid Map:


ACCN:	NM_152730
Insert Size:	3774 bp
OTI Disclaimer:	Our molecular clone sequence data has been matched to the reference identifier above as a point of reference. Note that the complete sequence of our molecular clones may differ from the sequence published for this corresponding reference, e.g., by representing an alternative RNA splicing form or single nucleotide polymorphism (SNP).
OTI Annotation:	This TrueClone is provided through our Custom Cloning Process that includes sub-cloning into OriGene's pCMV6 vector and full sequencing to provide a non-variant match to the expected reference without frameshifts, and is delivered as lyophilized plasmid DNA.
Components:	The ORF clone is ion-exchange column purified and shipped in a 2D barcoded Matrix tube containing 10ug of transfection-ready, dried plasmid DNA (reconstitute with 100 ul of water).

Reconstitution Method:

1. Centrifuge at 5,000xg for 5min.
2. Carefully open the tube and add 100ul of sterile water to dissolve the DNA.
3. Close the tube and incubate for 10 minutes at room temperature.
4. Briefly vortex the tube and then do a quick spin (less than 5000xg) to concentrate the liquid at the bottom.
5. Store the suspended plasmid at -20°C. The DNA is stable for at least one year from date of shipping when stored at -20°C.

RefSeq: [NM_152730.5](#)

RefSeq Size: 5134 bp

RefSeq ORF: 3774 bp

Locus ID: 221322

UniProt ID: [Q96NH3](#)

Cytogenetics: 6q22.31

MW: 144.8 kDa

Gene Summary: This gene encodes a TBC-domain containing protein. Studies of a similar protein in mouse and zebrafish suggest that the encoded protein is involved in sonic hedgehog signaling, and that it interacts with and stabilizes cell cycle-related kinase. Alternative splicing results in multiple transcript variants. [provided by RefSeq, Jul 2014]
Transcript Variant: This variant (1) represents the shorter transcript but encodes the supported protein. Sequence Note: This RefSeq record was created from transcript and genomic sequence data to make the sequence consistent with the reference genome assembly. The genomic coordinates used for the transcript record were based on transcript alignments.