

Product datasheet for **SC318532**

TBC1D1 (NM_015173) Human Untagged Clone

Product data:

Product Type:	Expression Plasmids
Product Name:	TBC1D1 (NM_015173) Human Untagged Clone
Tag:	Tag Free
Symbol:	TBC1D1
Synonyms:	TBC; TBC1
Mammalian Cell Selection:	Neomycin
Vector:	pCMV6-Entry (PS100001)
E. coli Selection:	Kanamycin (25 ug/mL)
Fully Sequenced ORF:	>SC318532 representing NM_015173. Blue=Insert sequence Red=Cloning site Green=Tag(s)

```
GCTCGTTT TAGTGAACCGTCAGAATTTTGT AATACGACTCACTATAGGGCGGCCGGGAATTCGTCGACTG
GATCCGGTACCGAGGAGATCTGCCGCC GCGATCGCC
ATGGAACCAATAACATTACAGCAAGGAAACATCTGCTTTCTAACGAGGTCTCGGTGGATTTTGGCCTG
CAGCTGGTGGGCTCCCTGCCTGTGCATTCCCTGACCACCATGCCATGCTGCCCTGGGTTGTGGCTGAG
GTGCGAAGACTCAGCAGGCAGTCCACCAGAAAGGAACCTGTAACCAAGCAAGTCCGGCTTTGCGTTTCA
CCCTCTGGACTGAGATGTGAACCTGAGCCAGGGAGAAGTCAACAGTGGGATCCCCTGATCTATTCCAGC
ATCTTTGAGTGAAGCCTCAGCGTGTTCACAACTGATTCACAACAGTCATGACCCAAGTACTTTGCT
TGCTGATTAAGGAAGACGCTGTCCACCGCAGAGTATCTGCTATGTGTTCAAAGCCGATGATCAAACA
AAAGTGCCTGAGATCATCAGCTCCATCCGTCAGGCGGGGAAGATCGCCCGCAGGAGGAGCTGCACTGC
CCGTCCGAGTTCGACGACACGTTTTCCAAGAAGTTCGAGGTGCTCTTCTGCGGCCGCGTGACGGTGGCG
CACAAGAAGGCTCCGCGGCCCTGATCGACGAGTGCATCGAGAAGTTCAATCACGTGACGGCAGCCGG
GGTCCGAGAGCCCCGCCCCAACCCGCCCATGCCGCGCCACAGGGAGCCAGGAGCCTGTGCCAGG
CCCATGCGCAAGTCTTCTCCAGCCGGCCTGCGCTCGCTGGCCTTTAGGAAGGAGCTGCAAGATGGG
GGCCTCCGAAGCAGCGGCTTCTCAGCTCCTTCGAGGAGAGCGACATTGAGAACCACCTCATTAGCGGA
CACAATATTGTGAGCCACAGATATCGAGGAAAAATCGAACTATGCTCTTCACGATTGGCCAGTCTGAA
GTTTACCTCATCAGTCTGACACCAAAAAATAGCATTGGAGAAAAATTTAAGGAGATATCCTTTTGC
TCTCAGGGCATCAGACAGTGGACCACTTTGGGTTTATCTGTCCGGAGTCTTCCGGAGGTGGCGGCTTT
CATTTTGTCTGTTACGTGTTTCAGTGCACAAATGAGGCTCTGGTTGATGAAATTATGATGACCCTGAAA
CAGGCCTTACGGTGGCCGAGTGCAGCAGACAGCTAAGGCGCCAGCCAGCTGTGTGAGGGCTGCCCC
CTGCAAAGCCTGCACAAGCTCTGTGAGAGGATAGAGGGAATGAATTCTTCCAAAACAAAAGTGAAGT
CAAAAGCACCTGACGACATTAACCAATCAGGAGCAGGCGACTATTTTGAAGAGGTTCAGAAATTGAGA
CCGAGAAATGAGCAGCGAGAGAATGAATTGATTATTTCTTTCTGAGATGTTTATATGAAGAGAAACAG
AAAGAACACATCCATATTGGGAGATGAAGCAGACATCGCAGATGCCAGCAGAGAATATTGGAAGTGA
TTACCACCGAGTCCACTCGATTTAGGCTAGATATGCTGAAAAACAAAGCAAAGAGATCTTTAACAGAG
```



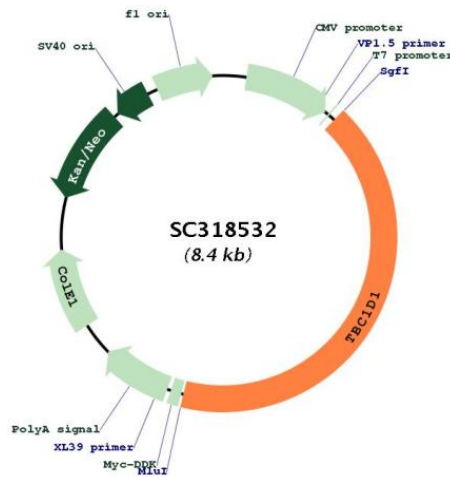
View online »

TCTTTAGAAAGTATTTTGTCCCGGGTAATAAAGCCAGAGGCCTGCAGGAACACTCCATCAGTGTGGAT
 CTGGATAGCTCCCTGTCTAGTACATTAAGTAACACCAGCAAAGAGCCATCTGTGTGTGAAAAGGAGGCC
 TTGCCATCTCTGAGAGCTCCTTAAAGCTCCTCGGCTCCTCGGAGGACCTGTCCAGTGACTCGGAGAGT
 CATCTCCAGAAGAGCCAGCTCCGCTGTCGCCCCAGCAGGCCCTCAGGAGGCGAGCAAACACCCTGAGT
 CACTTCCCATCGAATGCCAGGAACCTCCACAACCTGCCCGGGGTCCCCGGGGTTTCGAAAGGAAA
 CTTATGAGGTATCACTCAGTGAGCACAGAGACGCTCATGAACGAAAGGACTTTGAATCCAAAGCAAAC
 CATCTTGGTGATTCTGGTGGGACTCCTGTGAAGACCCGAGGCATTCTGGAGGCAGAGATATTCCTC
 CGAGTAGCCACCCCGAGAAGGCGTGCGATTCTCCAGCAGATATGAAGATTATTCAGAGCTGGGAGAG
 CTTCCCCACGATCTCCTTTAGAACCAGTTTGTGAAGATGGGCCCTTTGGCCCCCACCAGAGGAAAAG
 AAAAGGACATCTCGTGAGCTCCGAGAGCTGTGGCAAAGGCTATTCTTCAACAGATACTGCTGCTTAGA
 ATGGAGAAGGAAAATCAGAAGCTCCAAGCCTCTGAAAAATGATTTGCTGAACAAGCGCCTGAAGCTCGAT
 TATGAAGAAATTAAGTCTTAAAGAAGTAACACAGTGTGGGAAAAGATGCTTAGCACTCCAGGA
 AGATCAAAAATTAAGTTTACATGGAAAAATGCACTCGGCTGTTGGCAAGGTGTGCCACGTCATCAC
 CGAGGTGAAATCTGAAAATTTCTAGCTGAGCAATTCACCTTAAACACCAGTTTCCAGCAAACAGCAG
 CCAAAGGATGTGCCATACAAAGAACTCTTAAAGCAGCTGACTTCCAGCAGCATGCGATTCTTATTGAC
 CTTGGGGGAACCTTTCTACACCCCACTTCTCTGCCAGCTTGGAGCAGGACAGCTATCGCTTTAC
 AACATTTTGAAGGCCTACTCACTTCTAGACCAGGAAGTGGGATATTGCCAAGGTCTCAGCTTTGTAGCA
 GGCATTTTGTCTTTCATATGAGTGAGGAAGAGGCGTTTAAAAATGCTCAAGTTTCTGATGTTTGACATG
 GGGCTGCGGAAACAGTATCGGCCAGACATGATTATTTACAGATCCAGATGTACCAGCTCTCGAGGTTG
 CTTTATGATTACCACAGAGACCTCTACAATCACCTGGAGGAGCAGAGATCGGCCCCAGCCTCTACGCT
 GCCCCCTGGTTCCCTACCATGTTTGCCCTCACAGTCCCGCTGGGATTCTGAGCCAGAGTCTTTGATG
 ATTTTCTTTCAGGGAACAGAGGTCAATTTAAAGTGGCTTAAAGTCTGTTGGGAAGCCATAAGCCCTTG
 ATTCTGCAGCATGAAAACCTAGAAACCATAGTTGACTTTATAAAAAGCACGCTACCCAACCTTGGCTTG
 GTACAGATGGAAAAGACCATCAATCAGGTATTTGAAATGGACATCGCTAAACAGTTACAAGCTTATGAA
 GTTGAGTACCACGTCCTTCAAGAAGAAGTATCGATTCTCTCCTCCTCAGTGACAACCAAAGAAATGGAT
 AAATTAGAGAAAACCAACAGCAGCTTACGCAAACAGAACCTTGACCTCCTTGAACAGTTGCAGGTGGCA
 AATGGTAGGATCCAAAGCCTTGGAGCCACCATTGAGAAGCTCCTGAGCAGTGAGAGCAAGCTGAAGCAG
 GCCATGCTTACCTTAGAACTGGAGCGGTGGCCCTGCTGCAGACGGTGGAGGAGCTGCGGCGGGGAGC
 GCAGAGCCAGCGACCGGAGCCTGAGTGCACGCAGCCCGAGCCACGGGCGACTGA
 ACGCGTACGCGGCGCTCGAGCAGAACTCATCTCAGAAGAGGATCTGGCAGCAAATGATATCCTGGAT
 TACAAGGATGACGACGATAAGGTTTAAACGGCCGGC

Restriction Sites:

Sgfl-MluI

Plasmid Map:



ACCN:	NM_015173
Insert Size:	3507 bp
OTI Disclaimer:	Our molecular clone sequence data has been matched to the reference identifier above as a point of reference. Note that the complete sequence of our molecular clones may differ from the sequence published for this corresponding reference, e.g., by representing an alternative RNA splicing form or single nucleotide polymorphism (SNP).
OTI Annotation:	This TrueClone is provided through our Custom Cloning Process that includes sub-cloning into OriGene's pCMV6 vector and full sequencing to provide a non-variant match to the expected reference without frameshifts, and is delivered as lyophilized plasmid DNA.
Components:	The ORF clone is ion-exchange column purified and shipped in a 2D barcoded Matrix tube containing 10ug of transfection-ready, dried plasmid DNA (reconstitute with 100 ul of water).
Reconstitution Method:	<ol style="list-style-type: none">1. Centrifuge at 5,000xg for 5min.2. Carefully open the tube and add 100ul of sterile water to dissolve the DNA.3. Close the tube and incubate for 10 minutes at room temperature.4. Briefly vortex the tube and then do a quick spin (less than 5000xg) to concentrate the liquid at the bottom.5. Store the suspended plasmid at -20°C. The DNA is stable for at least one year from date of shipping when stored at -20°C.
RefSeq:	NM_015173.3
RefSeq Size:	5705 bp
RefSeq ORF:	3507 bp
Locus ID:	23216
UniProt ID:	Q86TI0
Cytogenetics:	4p14
Domains:	TBC
Protein Families:	Druggable Genome
MW:	133.1 kDa
Gene Summary:	<p>TBC1D1 is the founding member of a family of proteins sharing a 180- to 200-amino acid TBC domain presumed to have a role in regulating cell growth and differentiation. These proteins share significant homology with TRE2 (USP6; MIM 604334), yeast Bub2, and CDC16 (MIM 603461) (White et al., 2000 [PubMed 10965142]).[supplied by OMIM, Mar 2008]</p> <p>Transcript Variant: This variant (1) represents the longest transcript and encodes the longest isoform (1).</p>