

## Product datasheet for **SC318170**

### **TBC1D14 (NM\_020773) Human Untagged Clone**

#### **Product data:**

Product Type:	Expression Plasmids
Product Name:	TBC1D14 (NM_020773) Human Untagged Clone
Tag:	Tag Free
Symbol:	TBC1D14
Mammalian Cell Selection:	Neomycin
Vector:	pCMV6-Entry (PS100001)
E. coli Selection:	Kanamycin (25 ug/mL)

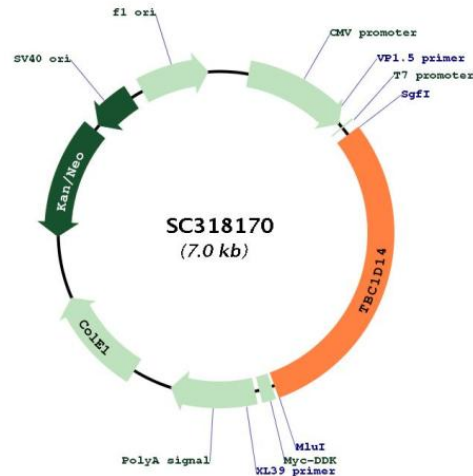


[View online »](#)

Fully Sequenced ORF: >SC318170 representing NM\_020773.  
Blue=Insert sequence Red=Cloning site Green=Tag(s)

```
GCTCGTTTAGTGAACCGTCAGAATTTTGTAAACGACTCACTATAGGGCGGCCGGGAATTCGTGACTG
GATCCGGTACCGAGGAGATCTGCCGCCCGCATCGCC
ATGACTGATGGAAAACCTCCACCTCTACAAATGGCGTAGCCTTCATGGGTATTCTGGATGGTGCACCA
GGAAACCCCTTCAGAACCTGCAACACGTCAATCTCAAGGCGCCCGACTCCTCTCCGCGCTGAGTAC
GGGCCAAAGCTGAAACTCAGGGCTTTAGAAGACCGGCACAGCCTCCAGTCCGTGGACTCGGGGATTCT
ACCCTGGAGATCGGGAACCCGGAGCCTGTACCCTGCAGCGCGGTCCACGTGAGGAGGAAGCAGTCCGAC
TCCGACCTCATCCCCGAGCGGGCCTTCCAGAGCGCCTGCGCGCTGCCATCCTGTGCGCCACCAGCTCCT
AGCAGCACCGAGCGGGAACAGAGCGTGCGCAAATCCTCCACGTTTCCAGGACAGGCTATGACTCGGTA
AAGCTCTATAGCCCGACCTCAAAGCCCTGACCCGACGATGATGTCTCCGTCTGCAGCGTGTCCAGT
CTTGGGACAGAGCTGTCCACCACGCTGTCCGTGAGCAATGAGGACATCTTGGACCTTGTGGTCCAGGC
AGCTCCAGTGCCATTGTGACCTGGAGAATGACGATGACCCACAGTTTACCAACGTACCTTGAGCTCT
ATCAAGGAAACCCGTGGCTTACACCAGCAGGACTGTGTTTCAAGCTGAGGAGGGGAGTAAATTGAAA
ATATTGGGGCCATTTAGTAACTTCTTTCGAAAGAACTTGCTTGCTAGAAAACAAAGTGCAAGGCTTGAC
AAACACAATGACTTGGGATGGAAGTTATTTGGGAAAGCGCCACTCCGAGAGAATGCCAGAAGGATTCA
AAGAGAATACAGAAGGAATATGAAGACAAGGCTGGAAGACCTAGCAAGCCACCCTCTCAAAGCAGAAT
GTGAGGAAGAATCTTGACTTTGAACCCTTCCACCACCGCACTCATCTCGAGGACAGACCAGCAAAT
CTCCAGCAAACACAGCTGAAGAAGCTCAGAAGCACAGACAGCAGTATGAAGAAATGGTGGTTCCAGGC
AAAAAGCGAGAGCTGAAAGAAGCCAGCGAAGGAAGAAGCAGCTGGAAGAAAGATGCAGAGTCGAGGAA
AGCATTGGAAACGCTGTGCTCACCTGGAATAATGAGATCTTACCTAACTGGGAAACAATGTGGTCTCT
AGAAAAGTTCGAGATTTATGGTGCAGGGAATCCCTCAAGTGAGAGGCAAAGTCTGGAGCTTAGCC
ATTGGCAACGAGTTAAATATCACCCACGAGCTCTTTGACATCTGTCTTGCCCGAGCCAAGGAGAGGTGG
CGGTCCCTTAGCACAGGAGGCTCTGAAGTGGAGAACAAGATGCTGGTTTTTTCAGCAGCAGACAGAGAA
GCCAGTCTGGAGCTTATTAACCTGGACATTTCTAGAACATTTCTAATCTCTGCATTTTCCAGCAAGGT
GGTCCATATCATGACATGTTGCACAGTATTTGGGCGCTTATACTTGTACCAGGAGATGTGGTTAT
GTCCAGGGCATGCTTTCATAGCAGCAGTGTGATCTTGAACCTAGATACTGCAGATGCCTTTATTGCC
TTTTCTAACCTTCTGAATAAACCTGTCAAATGGCGTTTTTTAGAGTGGACCATGGCCTTATGTTGACT
TATTTTGTGCATTTGAAGTATTCTTTGAAGAAAATTTGCCGAAATTTTTCGCATTTCAAGAAGAAC
AACCTAACTCCAGATATCTACCTAATTGATTGGATCTTTACCTTATATAGTAAATCTCTGCCCTCGAC
CTGGCCTGTGATCTGGGACGTGTTCTGTGCGGATGGGGAAGAGTTCCTGTTCCGACGCGCCCTGGGC
ATCCTGAAGCTGTTTCGAGGACATCCTGACCAAGATGGACTTCATTACATGGCCAGTTCCTGACCCGG
CTGCCCAGGACCTGCCCGCAGGAGCTGTTGCCTCCATCGCCACGATCCAGATGCAGAGCCGAAAC
AAGAAGTGGGCTCAGGTACTGACTGCATTGCAGAAAGACAGCCGGGAAATGGAGAAGGGAAGTCCGTCC
CTCCGACACTGA
ACGCGTACGCGGCCGCTCGAGCAGAACTCATCTCAGAAGAGGATCTGGCAGCAAATGATATCCTGGAT
TACAAGGATGACGACGATAAGGTTTAAACGCGCCGGC
```

Restriction Sites: SgfI-MluI

**Plasmid Map:**


**ACCN:** NM\_020773

**Insert Size:** 2082 bp

**OTI Disclaimer:** Our molecular clone sequence data has been matched to the reference identifier above as a point of reference. Note that the complete sequence of our molecular clones may differ from the sequence published for this corresponding reference, e.g., by representing an alternative RNA splicing form or single nucleotide polymorphism (SNP).

**OTI Annotation:** This TrueClone is provided through our Custom Cloning Process that includes sub-cloning into OriGene's pCMV6 vector and full sequencing to provide a non-variant match to the expected reference without frameshifts, and is delivered as lyophilized plasmid DNA.

**Components:** The ORF clone is ion-exchange column purified and shipped in a 2D barcoded Matrix tube containing 10ug of transfection-ready, dried plasmid DNA (reconstitute with 100 ul of water).

**Reconstitution Method:**

1. Centrifuge at 5,000xg for 5min.
2. Carefully open the tube and add 100ul of sterile water to dissolve the DNA.
3. Close the tube and incubate for 10 minutes at room temperature.
4. Briefly vortex the tube and then do a quick spin (less than 5000xg) to concentrate the liquid at the bottom.
5. Store the suspended plasmid at -20°C. The DNA is stable for at least one year from date of shipping when stored at -20°C.

**RefSeq:** [NM\\_020773.2](#)

**RefSeq Size:** 5009 bp

**RefSeq ORF:** 2082 bp

**Locus ID:** 57533

**UniProt ID:** [Q9P2M4](#)

**Cytogenetics:** 4p16.1

**MW:** 78.1 kDa

**Gene Summary:** Negative regulator of starvation-induced autophagosome formation.[UniProtKB/Swiss-Prot Function]  
Transcript Variant: This variant (1) represents the longest transcript and encodes the longest isoform (a). Both variants 1 and 2 encode the same isoform.