

## Product datasheet for **SC318071**

### **KBTBD12 (NM\_207335) Human Untagged Clone**

#### **Product data:**

Product Type:	Expression Plasmids
Product Name:	KBTBD12 (NM_207335) Human Untagged Clone
Tag:	Tag Free
Symbol:	KBTBD12
Synonyms:	KLHDC6
Mammalian Cell Selection:	Neomycin
Vector:	pCMV6-Entry (PS100001)
E. coli Selection:	Kanamycin (25 ug/mL)

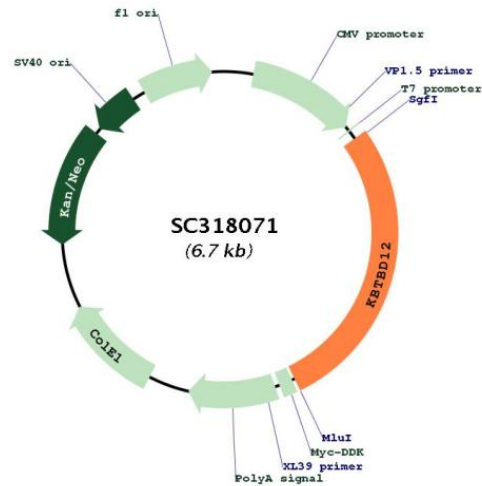


[View online »](#)

**Fully Sequenced ORF:** >SC318071 representing NM\_207335.  
Blue=Insert sequence Red=Cloning site Green=Tag(s)

```
GCTCGTTTAGTGAACCGTCAGAATTTTGTAAACGACTCACTATAGGGCGGCCGGGAATTCGTGCGACTG
GATCCGGTACCGAGGAGATCTGCCGCCCGCATCGCC
ATGGAGTGCAAGATTGAGGAAAAAGAAAAATACCAACATAGCTTGAATTTACTGAATAAAATTCAGAAC
ATGAAAGAATTAGCAGAAATGATTGATGTGGTACTCACAGCAGAAGGAGAGAAATTCCTTGCCACAGA
CTGGTCCCTGGCTGCATTTAGCCCTTATTTCAAAGCTATGTTACCTGTGGACTACTTGAATGTAATCAA
AGGGAAGTCATACTTTATGACATCACAGCAGAAAGTGTGTCGGTGTATTAAATTACATGTACAATGCA
GCTTTGGAGATCAATAATGCCAATGTACAGACTGTAGCTATGGCTGCCTATTTTATGCAGATGGAAGAA
GTCTTCAGTGTGTGCAAAAATATATGATGGACCACATGGATGCCTCCAAGTGTAGGTATCTATTAT
TTTGCAAAGCAGATTGGAGCTGAAGATTTATCTGATCGATCAAAGAAATATTTATATCAGCACTTTGCC
GAGGTGAGCTTACATGAAGAAATACTAGAAATCGAAGTGCACCAATTTTTGACACTTATTAATCAGAT
GATCTTAACATATCCAGAGAAGAGAGCATTCTGGACTTAGTCTGAGATGGGTAATCATAACAAAGAA
TTGCGTACAGTGCATCTTGTGAGCTTTGAAGCAAGTCAGATTGGAACCTGTAATCCTCTTTTTTA
AGACAAGCCCTAAGAAGGAACACAATGCTTCTGTGTGATGCAGATTGTGTTGACATAATTCAAAATGCA
TTCAAAGCCATCAAGACACCCCAACAGCACTCTCTAAATCTGCGCTATGGTATGGAGACTACCAGTCTT
CTGCTTTGCATTGGCAACAATCTTCAGGAATCAGATCAAGACATAGGAGCTATGGGGATGCCAGTTTT
TGTTATGATCCTGTATCACGGAAAACCTATTTTCATCTCATCTCCAAGTACGGAGAGGGTTTTAGAACT
GTGTGTACTGGTGTGTCATGGAAAATAACTATAATTTGGTGGTGGAGAAGCAAGTGCCTCTAAACTC
TCTAGACAAAAGAACAAGAATGTTGAAATTTATAGGTATCATGATAGAGGAAACCAGTTTTGGGAAAAG
TTATGCACAGCTGAATTTGAGAACTCTATGCTCTGGCAGTATTCATAATGACCTTTATGTTATAGGA
GGACAGATGAAAATTAACCAAGTATCTTATTACAACTGTGTTGATAAGTACTCTGTAGAACGGGAC
AATTGGAAAAGGGTGTCTCCCTTCCACTGCAATTGGCATGTCATGCTGTAGTGACAGTGAATAATAAA
CTTTATGTAATTGGAGGCTGGACCCCTCAGATGGATCTTCTGATGAAGAACCTGATCGATTAAGCAAC
AAACTGTTGCAAGTATGACCCAGCCAAGATCAATGGAGTGTGCGGGCACCCATGAAGTACTCTAAGTAC
CGATTAGTACAGCTGTAGTCAACAGTGAAGTTATGTTTTGGGTGGCATTGGCTGTGTAGGTCAAGAC
AAGGGCCAGGTTGAAAATGCCTTGACGTGGTGGAGATCTACAACCCAGATGGGGACTTTTGGCGAGAG
GGCCCTCCCATGCCAAGTCCCCTCCTCTCACTCCGCACCAATCCACCAATGCAGGGGCAGTGGATGGG
AAACTCTATGTCTGCGGGGATTCCATGGAGCAGATCGCCATGAGGTTATCTCCAAGAAATATTGGAA
CTGGACCCATGGGAAAACCAAGTGAATGTTGTAGCCATCAACGTCTCATGCATGACAGCTATGATGTC
TGCCATAGTAGCCAGGATGAATCCCCGAGACCTCATCCCCCGCCTCAGATTTGGTGAAGAAGGCAAT
GAGCACTAA
ACGCGTACGCGGCCGCTCGAGCAGAACTCATCTCAGAAGAGGATCTGGCAGCAAATGATATCCTGGAT
TACAAGGATGACGACGATAAGGTTTAAACGGCCGGC
```

**Restriction Sites:** SgfI-MluI

**Plasmid Map:**


**ACCN:** NM\_207335

**Insert Size:** 1872 bp

**OTI Disclaimer:** Our molecular clone sequence data has been matched to the reference identifier above as a point of reference. Note that the complete sequence of our molecular clones may differ from the sequence published for this corresponding reference, e.g., by representing an alternative RNA splicing form or single nucleotide polymorphism (SNP).

**OTI Annotation:** This TrueClone is provided through our Custom Cloning Process that includes sub-cloning into OriGene's pCMV6 vector and full sequencing to provide a non-variant match to the expected reference without frameshifts, and is delivered as lyophilized plasmid DNA.

**Components:** The ORF clone is ion-exchange column purified and shipped in a 2D barcoded Matrix tube containing 10ug of transfection-ready, dried plasmid DNA (reconstitute with 100 ul of water).

**Reconstitution Method:**

1. Centrifuge at 5,000xg for 5min.
2. Carefully open the tube and add 100ul of sterile water to dissolve the DNA.
3. Close the tube and incubate for 10 minutes at room temperature.
4. Briefly vortex the tube and then do a quick spin (less than 5000xg) to concentrate the liquid at the bottom.
5. Store the suspended plasmid at -20°C. The DNA is stable for at least one year from date of shipping when stored at -20°C.

**RefSeq:** [NM\\_207335.2](#)

**RefSeq Size:** 5268 bp

**RefSeq ORF:** 1872 bp

**Locus ID:** 166348

**UniProt ID:** [Q3ZCT8](#)

Cytogenetics: 3q21.3  
MW: 71.1 kDa