

## Product datasheet for SC317458

### LRRC59 (NM\_018509) Human Untagged Clone

#### Product data:

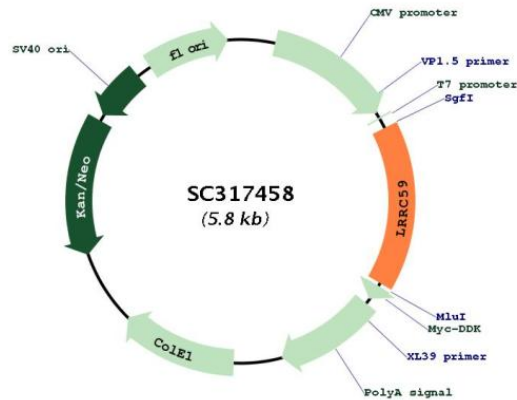
Product Type:	Expression Plasmids
Product Name:	LRRC59 (NM_018509) Human Untagged Clone
Tag:	Tag Free
Symbol:	LRRC59
Synonyms:	p34; PRO1855
Mammalian Cell Selection:	Neomycin
Vector:	pCMV6-Entry (PS100001)
E. coli Selection:	Kanamycin (25 ug/mL)
Fully Sequenced ORF:	>SC317458 representing NM_018509. Blue=Insert sequence Red=Cloning site Green=Tag(s)

```
GCTCGTTTGTAGTGAACCGTCAGAATTTTGTAAATACGACTACTATAGGGCGCCGGGAATTCGTCGACTG
GATCCGGTACCGAGGAGATCTGCCGCCCGCATCGCC
ATGACCAAGGCCGGTAGCAAGGGCGGGAACCTCCGCGACAAGCTGGACGGCAACGAACTGGACCTGAGC
CTCAGCGACCTGAATGAGGTCCCGGTGAAGGAGCTGGCTGCCCTTCCAAAGGCCACCATCCTGGATCTG
TCTTGTAAATAAAGTACTACTCTACCGTCGGATTTCTGTGGCCTCACACACCTGGTGAAGCTAGACCTG
AGTAAGAACAAGCTGCAGCAGCTGCCAGCAGACTTTGGCCGTCTGGTCAACCTCCAGCACCTGGATCTC
CTCAACAACAAGCTGGTCACTTGCCTGTCAGCTTTGCTCAGCTCAAGAACCTGAAGTGGTTGGACCTG
AAGGATAACCCCTGGATCCTGTCTGCGCAAGGTGGCAGGTGACTGCTTGGATGAGAAGCAGTGTAAAG
CAGTGTGCAAACAAGGTGTTACAGCACATGAAGGCCGTGCAGGCAGATCAGGAGCGGGAGAGGCAGCGG
CGGCTGGAAGTAGAACGTGAGGCAGAGAAGAAGCGTGAGGCTAAGCAGCGAGCTAAGGAAGCTCAGGAG
CGGGAAGTGCAGGAGCGGGAGAAGGGCGGAAGAGAAGGAGCGCCGGAGAAAGGAGTATGATGCCCTCAA
GCAGCCAAGCGGGAGCAGGAGAAGAAACCTAAGAAGGAAGCAAAATCAGGCCCCGAAATCTAAGTCTGGC
TCCCGTCCCGCAAGCCACCACCCCGGAAGCACACTCGTTCCTGGGCTGTGCTGAAGCTGCTGCTGCTG
CTGCTGTATTTGGTGTGGCGGGAGGGCTGGTTGCTTGTCCGGTGACAGAGCTGCAGCAGCAGCCCTC
TGCACCAGCGTGAACACCATCTATGACAAATGCGGTCCAGGGTCTACGCCCATGAGATCCTCCAGTGG
GTCCTCCAGACCGACTCTCAGCAGTGA
ACGCGTACGCGGCCGCTCGAGCAGAAACTCATCTCAGAAGAGGATCTGGCAGCAAATGATATCCTGGAT
TACAAGGATGACGACGATAAGGTTTAAACGGCCGGC
```

Restriction Sites: SgfI-MluI



[View online »](#)

**Plasmid Map:**


**ACCN:** NM\_018509

**Insert Size:** 924 bp

**OTI Disclaimer:** Our molecular clone sequence data has been matched to the reference identifier above as a point of reference. Note that the complete sequence of our molecular clones may differ from the sequence published for this corresponding reference, e.g., by representing an alternative RNA splicing form or single nucleotide polymorphism (SNP).

**OTI Annotation:** This TrueClone is provided through our Custom Cloning Process that includes sub-cloning into OriGene's pCMV6 vector and full sequencing to provide a non-variant match to the expected reference without frameshifts, and is delivered as lyophilized plasmid DNA.

**Components:** The ORF clone is ion-exchange column purified and shipped in a 2D barcoded Matrix tube containing 10ug of transfection-ready, dried plasmid DNA (reconstitute with 100 ul of water).

**Reconstitution Method:**

1. Centrifuge at 5,000xg for 5min.
2. Carefully open the tube and add 100ul of sterile water to dissolve the DNA.
3. Close the tube and incubate for 10 minutes at room temperature.
4. Briefly vortex the tube and then do a quick spin (less than 5000xg) to concentrate the liquid at the bottom.
5. Store the suspended plasmid at -20°C. The DNA is stable for at least one year from date of shipping when stored at -20°C.

**RefSeq:** [NM\\_018509.3](#)

**RefSeq Size:** 2933 bp

**RefSeq ORF:** 924 bp

<b>Locus ID:</b>	55379
<b>UniProt ID:</b>	<a href="#">Q96AG4</a>
<b>Cytogenetics:</b>	17q21.33
<b>Protein Families:</b>	Transmembrane
<b>MW:</b>	34.9 kDa
<b>Gene Summary:</b>	Required for nuclear import of FGF1, but not that of FGF2. Might regulate nuclear import of exogenous FGF1 by facilitating interaction with the nuclear import machinery and by transporting cytosolic FGF1 to, and possibly through, the nuclear pores.[UniProtKB/Swiss-Prot Function]