

## Product datasheet for **SC316010**

### TCTN1 (NM\_001082537) Human Untagged Clone

#### Product data:

Product Type:	Expression Plasmids
Product Name:	TCTN1 (NM_001082537) Human Untagged Clone
Tag:	Tag Free
Symbol:	TCTN1
Synonyms:	JBTS13; TECT1
Mammalian Cell Selection:	Neomycin
Vector:	pCMV6-Entry (PS100001)
E. coli Selection:	Kanamycin (25 ug/mL)

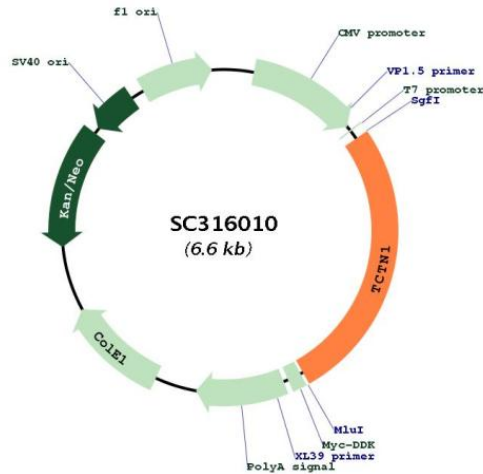


[View online »](#)

Fully Sequenced ORF: >SC316010 representing NM\_001082537.  
Blue=Insert sequence Red=Cloning site Green=Tag(s)

```
GCTCGTTTAGTGAACCGTCAGAATTTTGTAAACGACTCACTATAGGGCGGCCGGGAATTCGTGACTG
GATCCGGTACCGAGGAGATCTGCCGCCGCGATCGCC
ATGAGGCCGCGAGGTCTCCCGCCGCTCCTGGTGGTGCTCCTGGGCTGCTGGGCCTCCGTGAGCGCCCAG
ACCGATGCCACCCCGCGGTGACGACAGAGGGCCTCAACTCCACCGAGGCAGCCCTGGCCACCTTCGGA
ACTTTCCCGTCGACCAGGCCCGGGACTCCAGGGCTCCAGGGCCCTCCTCCGGCCCCAGGCCTACC
CCAGTCACGACGTTGCTGTTCTCTGTGCTGTGACTTATCCCCAGCACAGTGTGACATCAACTGCTGC
TGTGATCCCGACTGCAGCTCCGTGGATTCAGTGTCTTTTCTGCCTGCTCAGTTCAGTTGTACGGGC
GACAGCCAGTTTTGTAGTCAAAAAGCAGTCATCTATTCATTGAATTTTACAGCAAACCCACCTCAAAGA
GTATTTGAACTTGTGACCAGATTAATCCATCTATTTTCTGCATTCATATTACAACTATAAACCTGCA
TTATCCTTTATTAATCCAGAAGTACCTGATGAAAACAATTTTGATACATTGATGAAAACATCTGATGGT
TTTACATTGAATGCTGAATCATATGTTTCTTCAACCAAACCTGGATATTCCTACTGCTGCTAAATAT
GAGTATGGGGTCTCTGCAGACTTCAGATTCGTTTCTGAGATTCCTTCTGCTCCCTGACATCATCTCTG
TGCACTGATAATAACCCGTCAGCGTTTCTGGTGAACCAGGCTGTTAAGTGACCAGAAAAATAAATTTA
GAACAGTGTGAAGAAATTGAAGCCCTCAGCATGGCTTTTACAGCAGCCCGAAATTCTGAGGGTACCT
GATTCAAGAAAAAGGTCCCTATCACTGTTTCACTCCATCGTCACTTCACTCTAAATAAACGCTCACC
CGACGGGAGGACACTGATGTGCTGCAGCCGACTCTCGTCAACGCTGGACACTTTAGCCTTTGCGTGAAT
GTTGTTCTTGAGGTAAAGTACAGCCTCACATACAGATGCAGGTGAAGTACCAAAGCTGATCTCTCA
TTCGTTCTGGGGACAGTTAGCAGCGTAGTGGTCCCACTGCAGCAAAGTTTGAATTCATTTTCTCAG
GAAAATACCCAGCCAGTCCCTCTCAGTGGAAACCCTGGTTATGTCGTGGGGCTCCCATAGCTGCTGGA
TTCCAGCCTCATAAGGGGTCTGGGATTATTCAGACCACAATAGATATGGACAGCTTACTATTCTTCAT
AGCACAACCTGAGCAAGACTGCTTAGCACTGGAGGGGTCCGGACCCAGTATTATTTGGTTACACTATG
CAATCTGGCTGTAAGTAAGACTGACTGGAGCTCTCCCGTGTGAGCTCGTAGCACAGAAGGTGAAGAGC
CTGCTGTGGGGCCAGGGCTTCCCAGATTACGTGGCCCTTTTGGAAATCCAGGCCCAGGACATGCTG
GACTGGGTGCCCATCCACTTCATCACCCAGTCACTCAACAGGAAGGATTCCTGCCAGCTCCAGGGGCT
TTGGTTATAGAAGTGAAGTGGACTAAATACGGATCCCTGCTGAATCCACAGGCCAAAATAGTCAATGTA
ACTGCAAATCTAATTTTCATCCTCCTTCTGAGGCCAACTCAGGAAATGAAAGGACGATTCTTATTTCC
ACTGCGGTACTTTTGTGGATGTGTCTGCACCTGCAGAGGCAGGCTTCAGAGCTCCACCAGCCATCAAT
GCCAGGCTGCCCTTAACTTCTTCTCCGTTTGTGTTGA
ACGCGTACGCGGCCGCTCGAGCAGAACTCATCTCAGAAGAGGATCTGGCAGCAAATGATATCCTGGAT
TACAAGGATGACGACGATAAGGTTTAAACGGCCGGC
```

Restriction Sites: Sgfl-Mlul

**Plasmid Map:**


**ACCN:** NM\_001082537

**Insert Size:** 1764 bp

**OTI Disclaimer:** Our molecular clone sequence data has been matched to the reference identifier above as a point of reference. Note that the complete sequence of our molecular clones may differ from the sequence published for this corresponding reference, e.g., by representing an alternative RNA splicing form or single nucleotide polymorphism (SNP).

**OTI Annotation:** This TrueClone is provided through our Custom Cloning Process that includes sub-cloning into OriGene's pCMV6 vector and full sequencing to provide a non-variant match to the expected reference without frameshifts, and is delivered as lyophilized plasmid DNA.

**Components:** The ORF clone is ion-exchange column purified and shipped in a 2D barcoded Matrix tube containing 10ug of transfection-ready, dried plasmid DNA (reconstitute with 100 ul of water).

**Reconstitution Method:**

1. Centrifuge at 5,000xg for 5min.
2. Carefully open the tube and add 100ul of sterile water to dissolve the DNA.
3. Close the tube and incubate for 10 minutes at room temperature.
4. Briefly vortex the tube and then do a quick spin (less than 5000xg) to concentrate the liquid at the bottom.
5. Store the suspended plasmid at -20°C. The DNA is stable for at least one year from date of shipping when stored at -20°C.

**RefSeq:** [NM\\_001082537.2](#)

**RefSeq Size:** 2025 bp

**RefSeq ORF:** 1764 bp

**Locus ID:** 79600

**UniProt ID:** [Q2MV58](#)

**Cytogenetics:** 12q24.11

**Protein Families:** Secreted Protein

**MW:** 63.6 kDa

**Gene Summary:** This gene encodes a member of a family of secreted and transmembrane proteins. The orthologous gene in mouse functions downstream of smoothed and rab23 to modulate hedgehog signal transduction. This protein is a component of the tectonic-like complex, which forms a barrier between the ciliary axoneme and the basal body. A mutation in this gene was found in a family with Joubert syndrome-13. Alternative splicing results in multiple transcript variants. [provided by RefSeq, Feb 2016]  
Transcript Variant: This variant (2) uses an alternate in-frame splice site in the 3' coding region, compared to variant 1, resulting in a shorter protein (isoform 2).