

## Product datasheet for **SC314592**

### **RED1 (ADARB1) (NM\_015833) Human Untagged Clone**

#### **Product data:**

Product Type:	Expression Plasmids
Product Name:	RED1 (ADARB1) (NM_015833) Human Untagged Clone
Tag:	Tag Free
Symbol:	ADARB1
Synonyms:	ADAR2; DRABA2; DRADA2; NEDHYMS; RED1
Mammalian Cell Selection:	Neomycin
Vector:	pCMV6-Entry (PS100001)
E. coli Selection:	Kanamycin (25 ug/mL)



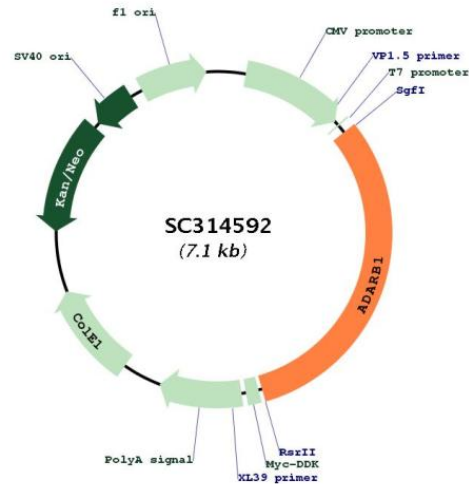
[View online »](#)

**Fully Sequenced ORF:** >SC314592 representing NM\_015833.  
 Blue=Insert sequence Red=Cloning site Green=Tag(s)

```

GCTCGTTTAGTGAACCGTCAGAATTTTGTAAACGACTCACTATAGGGCGGCCGGGAATTCGTGACTG
GATCCGGTACCGAGGAGATCTGCCGCCCGGATCGCC
ATGGATATAGAAGATGAAGAAAACATGAGTTCAGCAGCACTGATGTGAAGGAAAACCGCAATCTGGAC
AACGTGTCCCCAAGGATGGCAGCACACCTGGGCTGGCAGGGCTCTCAGCTCTCCAATGGGGTGGT
GGTGGCCCGGCAGAAAGCGGCCCTGGAGGAGGCAGCAATGGCCACTCCAAGTACCGCTGAAGAAA
AGGAGGAAAACACCAGGGCCCGTCTCCCAAGAAGCCCTGATGCAGCTGAATGAGATCAAGCCTGGT
TTGCAGTACACTCCTGTCCCAGACTGGGCCCCTGCACGCGCCTTTGTTTGTATGTCTGTGGAGGTG
AATGGCCAGGTTTTGAGGGCTCTGGTCCACAAAAGAAAAGGCAAACTCCATGCTGCTGAGAAGGCC
TTGAGGTCTTTCGTTTTCAGTTTCTAATGCCTCTGAGGCCACCTGGCCATGGGGAGGACCCTGTCTGC
AACACGGACTTCACATCTGACCAGGCCACTTCCCTGACACGCTCTTCAATGGTTTTGAACTCCTGAC
AAGGCGGAGCCTCCCTTTACGTGGGCTCCAATGGGGATGACTCCTTCAAGTTCCAGCGGGGACCTCAGC
TTGTCTGCTTCCCGGTGCTGCCAGCCTAGCCAGCCTCCTCTCCCTGTCTTACCACCTTCCACCC
CCGAGTGGGAAGAATCCCGTGTGATCTTGAACGAACTGCGCCAGGACTCAAGTATGACTTCTCTCC
GAGAGCGGGGAGAGCCATGCCAAGAGCTTCGTATGTCTGTGGTGGTGGTCAAGTCTTTGAAGGC
TCGGGGAGAAAACAAGAAGCTTGCCAAGGCCCGGCTGCGCAGTCTGCCCTGGCCGCCATTTTTAACTTG
CACTTGGATCAGACGCCATCTCGCCAGCCTATCCAGTGGGGTCTTCACTGCAATTTACCGCAGGTT
TTAGCTGACGCTGTCTCACGCTGGTCTGGGTAAGTTTGGTGACCTGACCGACAACCTTCTCTCCCT
CACGCTCGCAGAAAAGTCTGGTGGAGTGCATGACAACAGGCACAGATGTTAAAGATGCCAAGGTG
ATAAGTGTCTACAGGAACAAAATGATTAATGGTGAATACATGAGTGTGATCGTGGCCTTGCAATTAAT
GACTGCCATGCAGAAATAATATCTCGGAGATCCTTGTCTCAGATTTCTTTATACACAACCTGAGCTTTAC
TTAAATAACAAAAGATGATCAAAAAAGATCCATCTTTAGAAATCAGAGCGAGGGGGTTTTAGGCTGAAG
GAGAATGTCCAGTTTCTGTACATCAGCACCTCTCCCTGTGGAGATGCCAGAATCTTCTCACCACAT
GAGCCAATCCTGGAAGGGTCTCGCTCTTACACCCAGGCTGGAGTGCAGTGGTGAATCATGGCTCACTG
CAGCCTCGACCTCCTGGGCTCTTAAAGCGATCCTTCCACCTCAACCTTCCAAGGAGCTGGGACTACAGAA
CCAGCAGATAGACACCCAAATCGTAAAGCAAGAGGACAGCTACGGACCAAAATAGAGTCTGGTGAAGGG
ACGATTCCAGTGCCTCAATGCGAGCATCCAACGTGGGACGGGGTGTGCAAGGGGAGCGGCTGCTC
ACCATGCTCCTGCAGTACAAGATTGCACGCTGGAACGTGGTGGGATCCAGGGATCCCTGCTCAGCATT
TTCGTGGAGCCATTTACTTCTCGAGCATCATCTGGGACGCTTTACCAGGGGACCACCTTTCCAGG
GCCATGTACCAGCGGATCTCCAACATAGAGGACCTGCCACCTCTCTACACCTCAACAAGCCTTTGCTC
AGTGGCATCAGCAATGCAGAAGCACGGCAGCCAGGGAAGGCCCAACTTCAGTGTCAACTGGACGGTA
GGCGACTCCGCTATTGAGGTCAACAACGCCAGCTGGGAAGGATGAGCTGGGCCGCGCTCCCGCCTG
TGTAAGCACGCTTGTACTGTGCTGGATGCGTGTGCACGGCAAGGTTCCCTCCACTTACTACGCTCC
AAGATTACCAAGCCCAACGTGTACCATGAGTCCAAGCTGGCGGCAAAAGGAGTACCAGGCCCAAGGCG
CGTCTGTTACAGCCTTCAACAAGCGGGGCTGGGGCCCTGGGTGGAGAAGCCACCGAGCAGGACCAG
TTCTACTCAGCCCTGA
AGCGGACCGACGCGTACGCGGCCGCTCGAGCAGAACTCATCTCAGAAGAGGATCTGGCAGCAAATGAT
ATCCTGGATTACAAGGATGACGACGATAAGGTTTAA
  
```

**Restriction Sites:** Sgfl-RsrII

**Plasmid Map:**


**ACCN:** NM\_015833

**Insert Size:** 2226 bp

**OTI Disclaimer:** Our molecular clone sequence data has been matched to the reference identifier above as a point of reference. Note that the complete sequence of our molecular clones may differ from the sequence published for this corresponding reference, e.g., by representing an alternative RNA splicing form or single nucleotide polymorphism (SNP).

**OTI Annotation:** This TrueClone is provided through our Custom Cloning Process that includes sub-cloning into OriGene's pCMV6 vector and full sequencing to provide a non-variant match to the expected reference without frameshifts, and is delivered as lyophilized plasmid DNA.

**Components:** The ORF clone is ion-exchange column purified and shipped in a 2D barcoded Matrix tube containing 10ug of transfection-ready, dried plasmid DNA (reconstitute with 100 ul of water).

**Reconstitution Method:**

1. Centrifuge at 5,000xg for 5min.
2. Carefully open the tube and add 100ul of sterile water to dissolve the DNA.
3. Close the tube and incubate for 10 minutes at room temperature.
4. Briefly vortex the tube and then do a quick spin (less than 5000xg) to concentrate the liquid at the bottom.
5. Store the suspended plasmid at -20°C. The DNA is stable for at least one year from date of shipping when stored at -20°C.

**RefSeq:** [NM\\_015833.3](#)

**RefSeq Size:** 7044 bp

**RefSeq ORF:** 2226 bp

**Locus ID:** 104

**UniProt ID:** [P78563](#)

**Cytogenetics:** 21q22.3

**Domains:** DSRM, A\_deamin

**Protein Families:** Druggable Genome

**MW:** 80.8 kDa

**Gene Summary:** This gene encodes the enzyme responsible for pre-mRNA editing of the glutamate receptor subunit B by site-specific deamination of adenosines. Studies in rat found that this enzyme acted on its own pre-mRNA molecules to convert an AA dinucleotide to an AI dinucleotide which resulted in a new splice site. Alternative splicing of this gene results in several transcript variants, some of which have been characterized by the presence or absence of an ALU cassette insert and a short or long C-terminal region. [provided by RefSeq, Jul 2008]  
Transcript Variant: This variant (2), also known as DRADA2b, represents the longest transcript, which includes the ALU cassette insert and the long C-terminal region. It encodes the longest isoform (2), also known as hRED1-Long.