

Product datasheet for SC313180

NDRG2 (NM_201537) Human Untagged Clone

Product data:

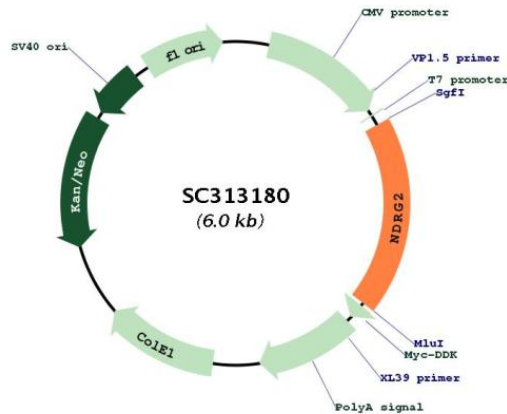
Product Type:	Expression Plasmids
Product Name:	NDRG2 (NM_201537) Human Untagged Clone
Tag:	Tag Free
Symbol:	NDRG2
Synonyms:	SYLD
Mammalian Cell Selection:	Neomycin
Vector:	pCMV6-Entry (PS100001)
E. coli Selection:	Kanamycin (25 ug/mL)
Fully Sequenced ORF:	>SC313180 representing NM_201537. Blue=Insert sequence Red=Cloning site Green=Tag(s)

```
GCTCGTTTGTAGTGAACCGTCAGAATTTTGTAAACGACTACTATAGGGCGCCGGGAATTCGTGACTG
GATCCGGTACCGAGGAGATCTGCCGCCGCGATCGCC
ATGGCGGAGCTGCAGGAGGTGCAGATCACAGAGGAGAAGCCACTGTTGCCAGGACAGACGCCCTGAGGCG
GCCAAGGAGGCTGAGTTAGCTGCCCGAATCCTCCTGGACCAGGGACAGACTCACTCTGTGGAGACACCA
TACGGCTCTGCACTTTCACTGTCTATGGCACCCCAACCCAAACGCCAGCGATCCTTACCTACCAC
GATGTGGGACTCAACTATAAATCTTGCTTCCAGCCACTGTTTCAGTTCGAGGACATGCAGGAAATCATT
CAGAACTTTGTGCGGGTTCATGTGGATGCCCTGGAATGGAAGAGGGAGCCCTGTGTTCCCTTTGGGA
TATCAGTACCCATCTCTGGACCAGTTGCAGACATGATCCCTTGGTCCGCAGTACCTAAATTTCTCT
ACAATAATTGGAGTTGGTGTGGAGCTGGAGCCTACATCCTGGCGAGATATGCTCTTAACCCCGGAC
ACTGTTGAAGGTCTTGCTCCTCATCAACATTGATCCCAATGCCAAGGGTTGGATGGATTGGCAGCCAC
AAGCTAACAGGCCTCACCTTTCCATTCCGGAGATGATCCTTGGACATCTTTTCAGCCAGGAAGAGCTC
TCTGGAAATTCTGAGTTGATACAAAAGTACAGAAATATCATTACACATGCACCCAACCTGGATAACATT
GAATTGTACTGGAACAGCTACAACAACCGCCGAGACCTGAACTTTGAGCGTGGAGGTGATATCACCTC
AGGTGTCCTGTGATGCTGGTGGTAGGAGACCAAGCACCTCATGAAGATGCAGTGGTGAATGTAACCTCA
AACTGGACCCCAACCCAGACCTCGTTCTCAAGATGGCTGACTCCGGAGGTGACGCCCAGCTGACTCAG
CCAGGCAAGCTGACCGAGGCCTCAAGTACTTCTGCAAGGCATGGGCTACATGGCCTCATCCTGCATG
ACTCGCCTGTCCCGTCTCGTACAGCCTCTGACCAGTGCAGCATCCGTTGATGGCAACCGGTCCCGC
TCTCGCACCTGTCCAGAGCAGCGAGTCTGGAATCTTTCTTCCGGGCCCCCGGGGCACACCATGGAG
GTCTCCTGTTGA
ACGCGTACGCGGCCGCTCGAGCAGAACTCATCTCAGAAGAGGATCTGGCAGCAATGATATCCTGGAT
TACAAGGATGACGACGATAAGGTTTAAACGGCCGGC
```

Restriction Sites: SgfI-MluI



[View online »](#)

Plasmid Map:


ACCN: NM_201537

Insert Size: 1116 bp

OTI Disclaimer: Our molecular clone sequence data has been matched to the reference identifier above as a point of reference. Note that the complete sequence of our molecular clones may differ from the sequence published for this corresponding reference, e.g., by representing an alternative RNA splicing form or single nucleotide polymorphism (SNP).

OTI Annotation: This TrueClone is provided through our Custom Cloning Process that includes sub-cloning into OriGene's pCMV6 vector and full sequencing to provide a non-variant match to the expected reference without frameshifts, and is delivered as lyophilized plasmid DNA.

Components: The ORF clone is ion-exchange column purified and shipped in a 2D barcoded Matrix tube containing 10ug of transfection-ready, dried plasmid DNA (reconstitute with 100 ul of water).

Reconstitution Method:

1. Centrifuge at 5,000xg for 5min.
2. Carefully open the tube and add 100ul of sterile water to dissolve the DNA.
3. Close the tube and incubate for 10 minutes at room temperature.
4. Briefly vortex the tube and then do a quick spin (less than 5000xg) to concentrate the liquid at the bottom.
5. Store the suspended plasmid at -20°C. The DNA is stable for at least one year from date of shipping when stored at -20°C.

RefSeq: [NM_201537.1](#)

RefSeq Size: 2075 bp

RefSeq ORF: 1116 bp

Locus ID: 57447

UniProt ID: [Q9UN36](#)

Cytogenetics: 14q11.2

MW: 40.8 kDa

Gene Summary: This gene is a member of the N-myc downregulated gene family which belongs to the alpha/beta hydrolase superfamily. The protein encoded by this gene is a cytoplasmic protein that may play a role in neurite outgrowth. This gene may be involved in glioblastoma carcinogenesis. Alternative splicing results in multiple transcript variants. [provided by RefSeq, Aug 2017]
Transcript Variant: This variant (4) differs in the 5' UTR compared to variant 1. Variants 1, 4, 6, 7 and 15 encode the same isoform (a).