

Product datasheet for SC312782

TAZ (NM_181312) Human Untagged Clone

Product data:

Product Type:	Expression Plasmids
Product Name:	TAZ (NM_181312) Human Untagged Clone
Tag:	Tag Free
Symbol:	TFAZZIN
Synonyms:	BTHS; CMD3A; EFE; EFE2; G4.5; LVNCX; TAZ; Taz1
Mammalian Cell Selection:	Neomycin
Vector:	pCMV6-Entry (PS100001)
E. coli Selection:	Kanamycin (25 ug/mL)
Fully Sequenced ORF:	>SC312782 representing NM_181312. Blue=Insert sequence Red=Cloning site Green=Tag(s)

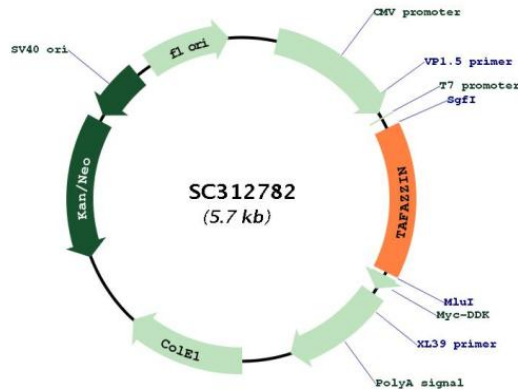
```
GCTCGTTT TAGTGAACCGTCAGAATTTTGT AATACGACTCACTATAGGGCGCCGGGAATTCGTCGACTG
GATCCGGTACCGAGGAGATCTGCCGCC CGGATCGCC
ATGCCTCTGCACGTGAAGTGGCCGTTCCCGCGGTGCCGCCGCTCACCTGGACCCTGGCCAGCAGCGTC
GTCATGGGCTTGGTGGGCACCTACAGCTGCTTCTGGACCAAGTACATGAACCACCTGACCGTGCACAAC
AGGGAGGTGCTGTACGAGCTCATCGAGAAGCGAGGCCCGCCACGCCCTCATCACCGTGTCCAATCAC
CAGTCCTGCATGGACGACCCTCATCTCTGGGGATCCTGAACTCCGCCACATCTGGAACCTGAAGTTG
ATGCGTTGGACCCTGCAGCTGCAGACATCTGCTTACCAAGGAGCTACACTCCCACTTCTCAGCTTG
GGCAAGTGTGTGCTGTGTGCCGAGGAGCAGAATTTTCCAAGCAGAGAATGAGGGGAAAGTGTCTA
GACACAGGCAGGCACATGCCAGGTGCTGGAAAAAGAAGAGAGAAAGGAGATGGCGTCTACCAAGGGG
ATGGACTTCATTTGGAGAAGCTCAACCATGGGGACTGGGTGCATATCTCCAGAAAGGAATCGGGCGC
CTGATTGCTGAGTGTCTCAACCCCATCATCTGCCCTGTGGCATGTCGGAATGAATGACGTCCTT
CCTAACAGTCCGCCCTACTTCCCCCGCTTTGGACAGAAAATCACTGTGCTGATCGGGAAGCCCTCAGT
GCCCTGCCTGACTCGAGCGGCTCCGGGCGGAGAAAGTCGGCTGTGGAGATGCGGAAAGCCCTGACG
GACTTCATTCAAGAGGAATTCAGCATCTGAAGACTCAGGCAGAGCAGCTCCACAACCACCTCCAGCCT
GGGAGATAG
ACGCGTACGCGGCCGCTCGAGCAGAACTCATCTCAGAAGAGGATCTGGCAGCAAATGATATCCTGGAT
TACAAGGATGACGACGATAAGGTTTAAACGGCCGCGC
```

Restriction Sites: SgfI-MluI



[View online »](#)

Plasmid Map:



ACCN: NM_181312

Insert Size: 837 bp

OTI Disclaimer: Our molecular clone sequence data has been matched to the reference identifier above as a point of reference. Note that the complete sequence of our molecular clones may differ from the sequence published for this corresponding reference, e.g., by representing an alternative RNA splicing form or single nucleotide polymorphism (SNP).

OTI Annotation: This TrueClone is provided through our Custom Cloning Process that includes sub-cloning into OriGene's pCMV6 vector and full sequencing to provide a non-variant match to the expected reference without frameshifts, and is delivered as lyophilized plasmid DNA.

Components: The ORF clone is ion-exchange column purified and shipped in a 2D barcoded Matrix tube containing 10ug of transfection-ready, dried plasmid DNA (reconstitute with 100 ul of water).

Reconstitution Method: 1. Centrifuge at 5,000xg for 5min.
 2. Carefully open the tube and add 100ul of sterile water to dissolve the DNA.
 3. Close the tube and incubate for 10 minutes at room temperature.
 4. Briefly vortex the tube and then do a quick spin (less than 5000xg) to concentrate the liquid at the bottom.
 5. Store the suspended plasmid at -20°C. The DNA is stable for at least one year from date of shipping when stored at -20°C.

RefSeq: [NM_181312.3](#)

RefSeq Size: 1899 bp

RefSeq ORF: 837 bp

Locus ID:	6901
UniProt ID:	Q16635
Cytogenetics:	Xq28
Protein Families:	ES Cell Differentiation/IPS, Transmembrane
MW:	31.7 kDa
Gene Summary:	<p>This gene encodes a protein that is expressed at high levels in cardiac and skeletal muscle. Mutations in this gene have been associated with a number of clinical disorders including Barth syndrome, dilated cardiomyopathy (DCM), hypertrophic DCM, endocardial fibroelastosis, and left ventricular noncompaction (LVNC). Multiple transcript variants encoding different isoforms have been described. A long form and a short form of each of these isoforms is produced; the short form lacks a hydrophobic leader sequence and may exist as a cytoplasmic protein rather than being membrane-bound. Other alternatively spliced transcripts have been described but the full-length nature of all these transcripts is not known. [provided by RefSeq, Jul 2008]</p> <p>Transcript Variant: This variant (3) lacks an in-frame coding exon compared to variant 1, resulting in a shorter isoform (3) compared to isoform 1.</p>