

Product datasheet for **SC310701**

TBC1D24 (NM_020705) Human Untagged Clone

Product data:

Product Type:	Expression Plasmids
Product Name:	TBC1D24 (NM_020705) Human Untagged Clone
Tag:	Tag Free
Symbol:	TBC1D24
Synonyms:	DEE16; DFNA65; DFNB86; DOORS; EIEE16; EPRPDC; FIME; TLDC6
Mammalian Cell Selection:	Neomycin
Vector:	pCMV6-Entry (PS100001)
E. coli Selection:	Kanamycin (25 ug/mL)

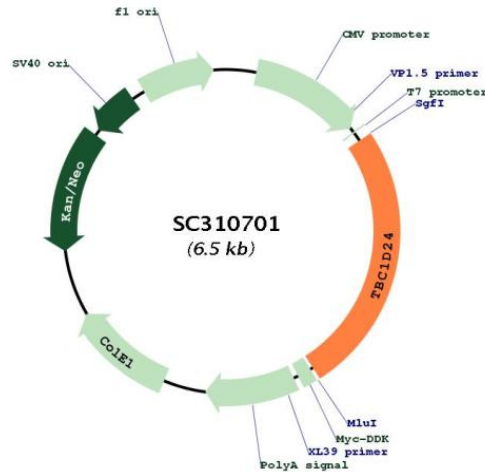


[View online »](#)

Fully Sequenced ORF: >SC310701 representing NM_020705.
Blue=Insert sequence Red=Cloning site Green=Tag(s)

```
GCTCGTTTAGTGAACCGTCAGAATTTTGTAAACGACTCACTATAGGGCGGCCGGGAATTCGTGACTG
GATCCGGTACCGAGGAGATCTGCCGCCGCGATCGCC
ATGGACTCTCCAGGATACAACCTGCTTCGTGGACAAGACAAGATGGACGCTGCCATCCAGGACCTGGGG
CCCAAGGAGCTGAGCTGCACTGAAGTGCAGGAAGTGAAGCAGCTGGCGGCCAGGGCTACTGGGCCAA
AGCCACGCCCTGCGGGGAAAGGTGTACCAGCGCCTGATCCGGGACATTCCTGCCGCACGGTCACGCCT
GACGCCAGCGTGTACAGCGACATCGTGGCAAGATCGTGGCAAGCACAGCAGCAGCTGCCTGCCGCTG
CCCAGTTCGTGGACAACACGCAGGTGCCAGCTACTGCCTGAATGCACGCGCGGAGGGGGCCGTGCGC
AAGATCCTCCTGTGCCTGGCCAACAGTTCCTCCGACATCTCCTTCTGCCCGCCCTGCCGGCCGTGGT
GCCCTGCTGCTGCACTACAGCATCGACGAGGCCGAGTGTTCGAGAAGGCCTGCCGCATCCTGCCCTGC
AATGACCCCGGCAGGAGGCTGATCGACCAGAGCTTCTGGCCTTTGAGTCGTCTGCATGACGTTTGGG
GACCTGGTGAACAAGTACTGCCAGGCGGCCACAAGCTGATGGTGGCCGTGTCGGAGGATGCTCTGCAG
GTCTATGCGGACTGGCAGCGCTGGTGTGGGGAGCTGCCCTCTGCTACTTCGCCCGGGTCTTTGAC
GTCTTCTGGTGGAGGGCTACAAGGTGCTGTACCAGCGTGGCGCTGGCCATCCTCAAGTTCTCCACAAG
GTGAGGGCCGGGAGCCGCTGGAGTCGGACAGCGTGAAGCAGGACATCCGCACGTTTCGTAGAGACATC
GCGAAGACGGTGTCCCCTGAGAAGCTGTGGAGAAAGCGTTTCGCCATCCGCCTCTTCTCCCGAAGGAG
ATCCAGCTCCTGCAGATGGCCAATGAGAAAGCCCTGAAGCAGAAGGGCATCACCGTGAAGCAGAAGAGG
CAGTTTGTACACTTGGCCGTCCATGCAGAGAAGTCCGCTCGGAGATCGTCAGCGTGAGGGAGATGAGA
GACATCTGGTCTGGGTCCCGAGCGCTTGGCCGTGCCAGCCCTTCTGCTGTTCTCCTCCCTGCAG
CACGGGTACAGCCTGGCCAGGTTCTACTTCCAGTGTGAAGGACATGAGCCTACCTCTTGCTCATCAAG
ACCACGCAGAAGGAGGTGTGGTGTACCTGTCCACAGACTGGAGTGAGAGAAATAAGTTTGGAGGC
AAACTGGGCTTCTTTGGACCGGAGAATGCTTTGTGTTTGGGCTGCAGCCTGAGGTGCAGCGCTACGAG
TGGGTGGTGATCAAGCACCCGAGCTGACCAAGCCCCACCCTTGATGGCTGCCGAGCCACCGCCCA
CTCAGCCACTCCGCCTCCTCAGACCCGCTGACCGCCTCTCGCCCTTCTGGCCGCTCGCCACTTCAAC
CTGCCCTCCAAGACCGAGTCCATGTTTATGGCGGGGGCAGGACTGCCTCATCGTGGGGGAGGAGGC
GGCCAGGCGCTTACATCGATGGGACCTGAACCGGGGCCGACAAGCCACTGCGACACCTTCAACAAC
CAGCCCTCTGCTCCGAGAACTTCTCATTGCTGCCGTGGAGGCTGGGGCTTCCAGGACCCTGACACC
CAGTGA
ACGCGTACGCGGCCGCTCGAGCAGAACTCATCTCAGAAGAGGATCTGGCAGCAAATGATATCCTGGAT
TACAAGGATGACGACGATAAGGTTTAAACGGCCGCGC
```

Restriction Sites: SgfI-MluI

Plasmid Map:


ACCN: NM_020705

Insert Size: 1662 bp

OTI Disclaimer: Our molecular clone sequence data has been matched to the reference identifier above as a point of reference. Note that the complete sequence of our molecular clones may differ from the sequence published for this corresponding reference, e.g., by representing an alternative RNA splicing form or single nucleotide polymorphism (SNP).

OTI Annotation: This TrueClone is provided through our Custom Cloning Process that includes sub-cloning into OriGene's pCMV6 vector and full sequencing to provide a non-variant match to the expected reference without frameshifts, and is delivered as lyophilized plasmid DNA.

Components: The ORF clone is ion-exchange column purified and shipped in a 2D barcoded Matrix tube containing 10ug of transfection-ready, dried plasmid DNA (reconstitute with 100 ul of water).

Reconstitution Method:

1. Centrifuge at 5,000xg for 5min.
2. Carefully open the tube and add 100ul of sterile water to dissolve the DNA.
3. Close the tube and incubate for 10 minutes at room temperature.
4. Briefly vortex the tube and then do a quick spin (less than 5000xg) to concentrate the liquid at the bottom.
5. Store the suspended plasmid at -20°C. The DNA is stable for at least one year from date of shipping when stored at -20°C.

RefSeq: [NM_020705.2](#)

RefSeq Size: 6589 bp

RefSeq ORF: 1662 bp

Locus ID: 57465

UniProt ID: [Q9ULP9](#)

Cytogenetics: 16p13.3

MW: 62.3 kDa

Gene Summary:

This gene encodes a protein with a conserved domain, referred to as the TBC domain, characteristic of proteins which interact with GTPases. TBC domain proteins may serve as GTPase-activating proteins for a particular group of GTPases, the Rab (Ras-related proteins in brain) small GTPases which are involved in the regulation of membrane trafficking. Mutations in this gene are associated with familial infantile myoclonic epilepsy. Alternative splicing results in multiple transcript variants. [provided by RefSeq, Feb 2011]

Transcript Variant: This variant (2) lacks an alternate in-frame exon compared to variant 1. The resulting isoform (2) has the same N- and C-termini but is shorter compared to isoform 1.

Sequence Note: This RefSeq record was created from transcript and genomic sequence data to make the sequence consistent with the reference genome assembly. The genomic coordinates used for the transcript record were based on transcript alignments.