

## Product datasheet for **SC305892**

### TSPAN17 (NM\_130465) Human Untagged Clone

#### Product data:

Product Type:	Expression Plasmids
Product Name:	TSPAN17 (NM_130465) Human Untagged Clone
Tag:	Tag Free
Symbol:	TSPAN17
Synonyms:	FBX23; FBXO23; TM4SF17
Mammalian Cell Selection:	Neomycin
Vector:	pCMV6-Entry (PS100001)
E. coli Selection:	Kanamycin (25 ug/mL)
Fully Sequenced ORF:	>SC305892 representing NM_130465. Blue=Insert sequence Red=Cloning site Green=Tag(s)

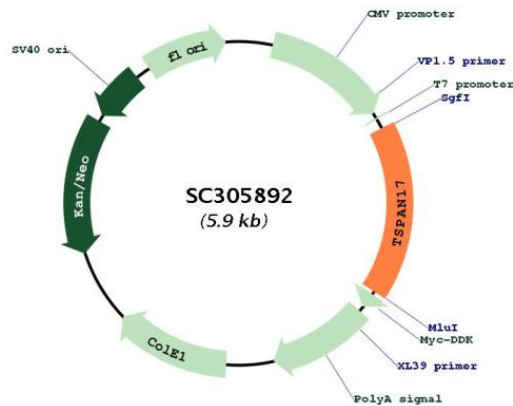
```
GCTCGTTTGTGAACCGTCAGAATTTTGTAAACGACTCACTATAGGGCGCCGGGAATTCGTCGACTG
GATCCGGTACCGAGGAGATCTGCCGCCGCGATCGCC
ATGCCCGCAAGCACCAGCATTTCAGGAACCTGAGGTCGGCTGCTGCGGGAAACTTCCTGTTTGGC
TTCAACATTGTCTTCTGGGTGCTGGGAGCCCTGTTCTGGCTATCGGCCTCTGGGCTGGGGTGAGAAG
GGCGTTCTCTCGAACATCTCAGCGCTGACAGATCTGGGAGGCCTTGACCCCGTGTGGCTGTTTGTGGTA
GTTGGAGGCGTCATGTCGGTCTGGGCTTTGCTGGCTGCATTGGGGCCCTCCGGGAGAACACCTTCCTG
CTCAAGTTTTTCTCCGTGTTCTCGGTCTCATCTTCTTCTGGAGCTGGCAACAGGGATCCTGGCCTTT
GTCTTCAAGGACTGGATTTCGAGACCAGCTCAACCTCTTCAACAACAACGTCAGGCCTACCGGGAC
GACATTGACCTCCAGAACCTCATTGACTTTGCTCAGGAATACTGGTCTTGTCTGCGGAGCCCGAGGCCCC
AATGACTGGAACCTCAATATCTACTTCAACTGCACTGACTTGAACCCAGCCGGGAGCGCTGCGGGGTG
CCCTTCTCCTGCTGCGTCAGGGACCCTGCGGAGGATGTCCTCAACACCCAGTGTGGCTACGACGTCGGG
CTCAAACCTGGAGCTGGAGCAGCAGGGCTTCATCCACACCAAGGCTGCGTGGGCCAGTTTGAAGAAGTG
CTGCAGGACAACCTGATTGTGGTGGCGGGAGTCTTCATGGGCATCGCCCTCCTCCAGATCTTTGGCATC
TGCTGGCCAGAACCTCGTGAGTGACATCAAGGCAGTAAAGCCAACCTGGAGCAATGGAATGATGAC
TTTGAAAACCACTGGCTTACGCCACCATTTCGAGGTCCTGTCCACGGCGGGCCCTCAGCAGAATCT
CTGACTGGGGCCCTGGCCCGCCACCAGCCGACATGTTTTCTTTGGCCTGGGTGGTTATACCTT
GAGCCAACTTTAAAAATTGGTAG
ACGCGTACGCGGCCGCTCGAGCAGAAACTCATCTCAGAAGAGGATCTGGCAGCAAATGATATCCTGGAT
TACAAGGATGACGACGATAAGGTTTAAACGGCCGGC
```

Restriction Sites: SgfI-MluI



[View online »](#)

## Plasmid Map:



ACCN: NM\_130465

Insert Size: 990 bp

**OTI Disclaimer:** Our molecular clone sequence data has been matched to the reference identifier above as a point of reference. Note that the complete sequence of our molecular clones may differ from the sequence published for this corresponding reference, e.g., by representing an alternative RNA splicing form or single nucleotide polymorphism (SNP).

**OTI Annotation:** This TrueClone is provided through our Custom Cloning Process that includes sub-cloning into OriGene's pCMV6 vector and full sequencing to provide a non-variant match to the expected reference without frameshifts, and is delivered as lyophilized plasmid DNA.

**Components:** The ORF clone is ion-exchange column purified and shipped in a 2D barcoded Matrix tube containing 10ug of transfection-ready, dried plasmid DNA (reconstitute with 100 ul of water).

**Reconstitution Method:**

1. Centrifuge at 5,000xg for 5min.
2. Carefully open the tube and add 100ul of sterile water to dissolve the DNA.
3. Close the tube and incubate for 10 minutes at room temperature.
4. Briefly vortex the tube and then do a quick spin (less than 5000xg) to concentrate the liquid at the bottom.
5. Store the suspended plasmid at -20°C. The DNA is stable for at least one year from date of shipping when stored at -20°C.

RefSeq: [NM\\_130465.4](#)

RefSeq Size: 2596 bp

RefSeq ORF: 990 bp

Locus ID: 26262

UniProt ID: [Q96FV3](#)

Cytogenetics: 5q35.2

Protein Families: Transmembrane

MW: 36.7 kDa

**Gene Summary:** This gene encodes a member of the transmembrane 4 superfamily. It is characterized by four tetraspanin transmembrane segments. The function of this gene has not yet been determined. [provided by RefSeq, Mar 2014]

Transcript Variant: This variant (2) uses an alternate in-frame splice site in the central coding region, compared to variant 1, resulting in an isoform (b) that is shorter than isoform a.