

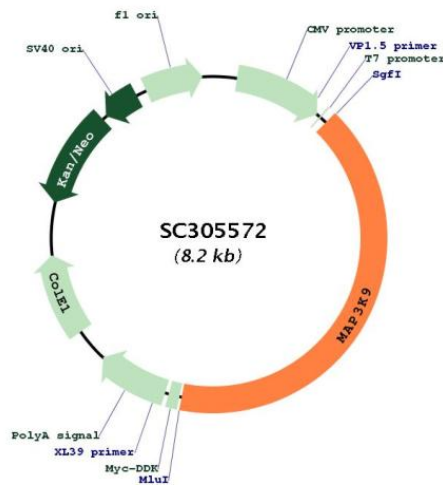

```

AAGAGCCGGCTGAAGCTCAAGGATGGCAACCGCATCAGCCTCCCTTCTGATTTCCAGCACAAAGTTCAGC
GTGCAGGCCTCCCTACCATGGATAAAAGGAAGAGTCTTATCAACAGCCGCTCCAGTCTCTCTGCAAGC
CCCACCATCATTCTCGCCTTCGAGCCATCCAGTTGACACCAGGTGAAAGCAGCAAAAACCTGGGGCAGG
AGCTCAGTCGTCCCAAAGGAGGAAGGGGAGGAGGAGAAGAGGGCCCCAAAGAAGAAGGGACGGACG
TGGGGGCCAGGGACGCTTGGTCAGAAGGAGCTTGCTCGGGAGATGAAGGATCCCCTCAGAGACGTGAG
AAAGCTAATGGTTAAGTACCCCATCAGAATCTCCACATTTCCACTTGGGCCTCAAGTCCCTGGTAGAT
GGATATAAGCAGTGGTCGTCCAGTGCCCCAACCTGGTGAAGGGCCCAAGGAGTAGCCCGGCCCTGCCA
GGTTTACCAGCCTTATGGAGATGGCCTTGTGGCAGCCAGTTGGTGGTGGTCCCATCGACATTGAAGAG
GATGAGGACAGTGAAGGCCAGGGAGTGGAGAGAGTGCCTACAGCATTACCCAGCCAGTCTTACCTC
TGTATCCCATTCCCTCGTGGAGAGGATGGCGATGGCCCCCTCCAGTGATGGAATCCATGAGGAGCCACC
CCAGTCAACTCGGCCACGAGTACCCCTCAGCTGACGCCAACCAACAGCCTCAAGCGGGGGCGTGGCCAC
CACCGCCGCTGCGAGGTGGCTCTGCTCGGCTGTGGGGCTGTTCTGGCAGCCACAGGCCTAGGTTTAC
TTGCTGGAAGCTGGCAAGTGCCAGCTGCTTCCCCTGGAGGAGCCTGAGCCACCAGCCGGGAGGAGAAG
AAAAGACGGGAGGGTCTTTTTCAGAGGTCCAGCCGCTCTCGTCGGAGCACCAGCCCCCATCCCGAAAG
CTTTTCAAGAAGGAGAGCCCATGCTGTTGCTAGGAGACCCTCTGCCTCCCTGACGCTGCTCTCCCTC
TCCTCCATCTCCGAGTGAACCTCACACGCTCCCTGCTGCGCTCCGACAGCGATGAAATTGTCGTGTAT
GAGATGCCAGTACGCCAGTTCGAGGCCCTCCCCTGAGTCCATGTACCCACAACCCCTGGTCAATGTC
CGAGTAGAGCGCTTCAAACGAGATCCTAACCAATCTCTGACTCCCACCATGTCACCCTCACCACCCCC
TCGAGCCAGCAGTACCCGGCGGACTCCTTCTGATGGGGCCCTTAAGCCAGAGACTCTCCTAGCCAGC
AGGAGCCCCTCCAGCAATGGGTTGAGCCCCAGTCTGGAGCAGGAATGTTGAAAACCCCAAGTCCCAGC
CGAGACCCAGGTGAATCCCCCGTCTCCCTGACCCCAATGTGGTCTTCCCCCAACCCCAAGGCGCTGG
AACACTCAGCAGGACTCTACCTGGAGAGACCCAAGACTCTGGAGTTTCTGCCTCGGCCGCGTCTTCT
GCCAACCGGCAACGGCTGGACCCCTGGTGGTTTGTGTCCCCAGCCATGCCCGCAGCAGCTCCCAGCC
AACAGTCCAGCACAGAGACGCCAGCAACCTGGACTCCTGCTTTGCTAGCAGTAGCAGCAGCTGTAGAG
GAGCGGCCTGGACTTCCAGCCCTGCTCCCGTTCAGGCAGGGCCGCTGCCCCGACTGAGCGGACGCTC
CTGGACCTGGATGCAGAGGGGCAGAGTCAGGACAGCACCCTGCCGCTGTGCAGAGCGGAAGTGAACACA
CACAGGCTGCCCTTATGAGATCCAGCAGGAGTTCTGGTCTTAG
ACGCGTACGCGGCCGCTCGAGCAGAAACTCATCTCAGAAGAGGATCTGGCAGCAAATGATATCCTGGAT
TACAAGGATGACGACGATAAGGTTTAAACGGCCGCGC
    
```

Restriction Sites:

Sgfl-MluI

Plasmid Map:



ACCN:

NM_033141

Insert Size:

3357 bp

OTI Disclaimer:	Our molecular clone sequence data has been matched to the reference identifier above as a point of reference. Note that the complete sequence of our molecular clones may differ from the sequence published for this corresponding reference, e.g., by representing an alternative RNA splicing form or single nucleotide polymorphism (SNP).
OTI Annotation:	This TrueClone is provided through our Custom Cloning Process that includes sub-cloning into OriGene's pCMV6 vector and full sequencing to provide a non-variant match to the expected reference without frameshifts, and is delivered as lyophilized plasmid DNA.
Components:	The ORF clone is ion-exchange column purified and shipped in a 2D barcoded Matrix tube containing 10ug of transfection-ready, dried plasmid DNA (reconstitute with 100 ul of water).
Reconstitution Method:	<ol style="list-style-type: none"> 1. Centrifuge at 5,000xg for 5min. 2. Carefully open the tube and add 100ul of sterile water to dissolve the DNA. 3. Close the tube and incubate for 10 minutes at room temperature. 4. Briefly vortex the tube and then do a quick spin (less than 5000xg) to concentrate the liquid at the bottom. 5. Store the suspended plasmid at -20°C. The DNA is stable for at least one year from date of shipping when stored at -20°C.
RefSeq:	<u>NM_033141.3</u>
RefSeq Size:	11211 bp
RefSeq ORF:	3357 bp
Locus ID:	4293
UniProt ID:	<u>P80192</u>
Cytogenetics:	14q24.2
Protein Families:	Druggable Genome, Protein Kinase
MW:	123.4 kDa
Gene Summary:	<p>Serine/threonine kinase which acts as an essential component of the MAP kinase signal transduction pathway. Plays an important role in the cascades of cellular responses evoked by changes in the environment. Once activated, acts as an upstream activator of the MKK/JNK signal transduction cascade through the phosphorylation of MAP2K4/MKK4 and MAP2K7/MKK7 which in turn activate the JNKs. The MKK/JNK signaling pathway regulates stress response via activator protein-1 (JUN) and GATA4 transcription factors. Plays also a role in mitochondrial death signaling pathway, including the release cytochrome c, leading to apoptosis.[UniProtKB/Swiss-Prot Function]</p> <p>Transcript Variant: This variant (1) represents the longest transcript and encodes the longest isoform (1). Sequence Note: This RefSeq record was created from transcript and genomic sequence data to make the sequence consistent with the reference genome assembly. The genomic coordinates used for the transcript record were based on transcript alignments.</p>