

Product datasheet for **SC305421**

TBC1D3 (TBC1D3F) (NM_032258) Human Untagged Clone

Product data:

Product Type:	Expression Plasmids
Product Name:	TBC1D3 (TBC1D3F) (NM_032258) Human Untagged Clone
Tag:	Tag Free
Symbol:	TBC1D3F
Synonyms:	TBC1D3; TBC1D3G
Mammalian Cell Selection:	Neomycin
Vector:	pCMV6-Entry (PS100001)
E. coli Selection:	Kanamycin (25 ug/mL)



[View online »](#)

Fully Sequenced ORF: >SC305421 representing NM_032258.
 Blue=Insert sequence Red=Cloning site Green=Tag(s)

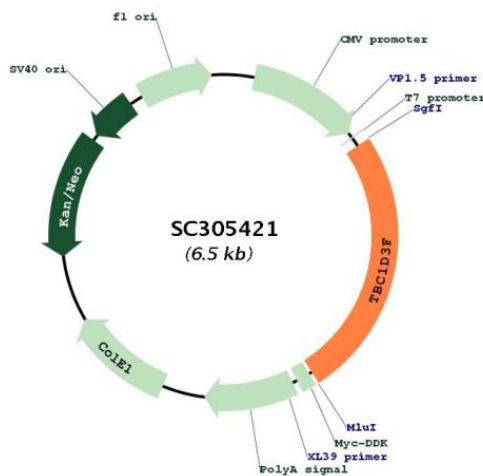
```

GCTCGTTTAGTGAACCGTCAGAATTTTGTAAACGACTCACTATAGGGCGGCCGGGAATTCGTGCGACTG
GATCCGGTACCGAGGAGATCTGCCGCCGCGATCGCC
ATGGACGTGGTAGAGGTCGCGGGTAGTTGGTGGGCACAAGAGCGAGAGGACATCATTATGAAATACGAA
AAGGGACACCCGAGCTGGGCTGCCAGAGGACAAGGGCCCTAAGCCTTTTCGAAGCTACAACAACAACGTC
GATCATTGGGGATTGTACATGAGACGGAGCTGCCTCCTCTGACTGCGCGGGAGGCGAAGCAAATTCGG
CGGGAGATCAGCCGAAAGAGCAAGTGGGTGGATATGCTGGGAGACTGGGAGAAATACAAAAGCAGCAGA
AAGCTCATAGATCGAGCGTACAAGGGAATGCCATGAACATCCGGGGCCCGATGTGGTCACTCCTCTG
AACATTGAGGAAATGAAGTTGAAAAACCCCGAAGATACCAGATCATGAAGGAGAAGGGCAAGAGGTCA
TCTGAGCACATCCAGCGCATCGACCGGGACGTAAGCGGGACATTAAGGAAGCATATATTCTTCAGGGAT
CGATACGGAACCAAGCAGCGGAACTACTCCACATCCTCCTGGCATATGAGGAGTACAACCCGGAGGTG
GGCTACTGCAGGGACCTGAGCCACATCGCCGCCTTGTTCCTCCTATCTTCTGAGGAGGATGCATTC
TGGGCACTGGTGCAGCTGCTGGCCAGTGAGAGGCACTCCCTGCAGGGATTTACAGCCCAAATGGCGGG
ACCGTCCAGGGGCTCCAAGACCAACAGGAGCATGTGGTAGCCACGTCACAACCAAGACCATGGGGCAT
CAGGACAAGAAAGATCTATGTGGGCAAGTGTCCCGTTAGGCTGCCTCATCCGGATATTGATTGACGGG
ATCTCTCTCGGGCTCACCTGCGCCTGTGGGACGTGTATCTGGTAGAAGGCGAACAGGCGTTGATGCCG
ATAACAAGAAATCGCCTTTAAGGTTACAGCAGAAGCGCCTCACGAAGACGTCAGGTGTGGCCCGTGGCA
CGTTTTTGCAACCGGTTCTGTTGATACCTGGGCCAGGGATGAGGACACTGTGCTCAAGCATCTTAGGGCC
TCTATGAAGAAATAACAAGAAAGAAAGGGGACGTGCCACCCAGCCAAACCCGAGCAAGGGTCGTGCG
GCATCCAGGCCTGTGCCGGTTCACGTGGCGGGAAGACCCTCTGCAAGGGGGACAGACAGGCCCTCCA
GGCCACCAGCCCGTTCCCGGCCCATTTGGTCAGCTTCCCGCCACGGGCACCTCGTTCTTCCACA
CCCTGTCTGGTGGGGCTGTCCGGGAAGACACTACCCTGTGGCACTCAGGGTGTGCCAGCCCGGCC
CTGGCTCAGGGAGGACCTCAGGGTTCCTGGAGATTCTGCAAGTGGAACTCCATGCCCGCCTCCCAACC
GACCTGGACGTAGAGGGCCCTTGGTTCGCCATTATGATTTAGACAGAGCTGCTGGGTCGTGCCATA
TCCCAGGAGGACCAGCTGGCCCTGCTGGCAGGCTGAACACCCTGCGGAGCGGGTGGATCGGCTTTC
GCTGCACCCAGCACTGATTCGACAGGGCACCCTTCAGAGCTAGGGACGAACAGCAGTGTGCTCCC
ACCTCAGGGCCTTGCTCTGCGGCCTCCACTTGGAAAGTTCTCAGTTCCTCCAGGCTTCAG
ACGCGTACGCGGCCGCTCGAGCAGAACTCATCTCAGAAGAGGATCTGGCAGCAAATGATATCTGGAT
TACAAGGATGACGACGATAAGGTTTAAACGGCCGGC
  
```

Restriction Sites:

Sgfl-MluI

Plasmid Map:



ACCN:	NM_032258
Insert Size:	1650 bp
OTI Disclaimer:	Our molecular clone sequence data has been matched to the reference identifier above as a point of reference. Note that the complete sequence of our molecular clones may differ from the sequence published for this corresponding reference, e.g., by representing an alternative RNA splicing form or single nucleotide polymorphism (SNP).
OTI Annotation:	This TrueClone is provided through our Custom Cloning Process that includes sub-cloning into OriGene's pCMV6 vector and full sequencing to provide a non-variant match to the expected reference without frameshifts, and is delivered as lyophilized plasmid DNA.
Components:	The ORF clone is ion-exchange column purified and shipped in a 2D barcoded Matrix tube containing 10ug of transfection-ready, dried plasmid DNA (reconstitute with 100 ul of water).
Reconstitution Method:	<ol style="list-style-type: none"> 1. Centrifuge at 5,000xg for 5min. 2. Carefully open the tube and add 100ul of sterile water to dissolve the DNA. 3. Close the tube and incubate for 10 minutes at room temperature. 4. Briefly vortex the tube and then do a quick spin (less than 5000xg) to concentrate the liquid at the bottom. 5. Store the suspended plasmid at -20°C. The DNA is stable for at least one year from date of shipping when stored at -20°C.
RefSeq:	<u>NM_032258.4</u>
RefSeq Size:	2079 bp
RefSeq ORF:	1650 bp
Locus ID:	84218
UniProt ID:	<u>A6NER0</u>
Cytogenetics:	17q12
MW:	62.2 kDa
Gene Summary:	Acts as a GTPase activating protein for RAB5. Does not act on RAB4 or RAB11 (By similarity). [UniProtKB/Swiss-Prot Function]