

Product datasheet for SC305174

PREX2 (NM_024870) Human Untagged Clone

Product data:

Product Type:	Expression Plasmids
Product Name:	PREX2 (NM_024870) Human Untagged Clone
Tag:	Tag Free
Symbol:	PREX2
Synonyms:	DEP.2; DEPDC2; P-REX2; PPP1R129
Mammalian Cell Selection:	Neomycin
Vector:	pCMV6-Entry (PS100001)
E. coli Selection:	Kanamycin (25 ug/mL)
Fully Sequenced ORF:	>SC305174 representing NM_024870. Blue=Insert sequence Red=Cloning site Green=Tag(s)

```
GCTCGTTT TAGTGAACCGTCAGAATTTTGT AATACGACTCACTATAGGGCGGCCGGGAATTCGTCGACTG
GATCCGGTACCGAGGAGATCTGCCGCC CGGATCGCC
ATGAGCGAGGACAGCCGCGGAGACAGCCGCGCGGAGAGCGCCAAGGACCTGGAGAAGCAGCTTCGCCTG
CGCGTGTGCGTGCTCAGCGAGCTCCAGAAGACCGAGCGGGACTATGTGGGCACGCTGGAGTTCCTGGTG
TCGGCATTCTTACACAGAATGAACCAAGTGTGCAGCATCAAAGTTGACAAAAATGTACAGAAGAAAACA
GTGAAGATGTTGTTCTCAAACATTGAAGACATCCTTGCAGTACATAAAGAATTCTAAAAGTCGTGGAA
GAATGCTTACACCCCGAACCTAATGCTCAACAAGAAGTGGGAACCTGCTTCTTCACTTTAAGACAAG
TTTCGTATCTATGATGAATATTGTAGTAACCATGAGAAGGCACAAAAATTA CTCTTGAACTCAACAAA
ATAAGAACAATCCGGACATTTCTTTTGAAGTGCATGCTGCTTGGAGGACGGAAGAACACAGATGTTCCC
TTGGAAGGATATTTAGTAACACCAATACAAAGAATATGCAAGTACCCTCTTATTTGAAAGGAGTTGCTG
AAGCGGACTCCACGGAACACAGTACTATGCAGCAGTGTGGAAGCCCTCCAAGCCATGAAAGCTGTC
TGTTCCAACATAAACGAGGCCAAGAGACAGATGGAGAAGTTAGAAAGTTT TAGAGGAATGGCAGTCTCAC
ATTGAAGGCTGGGAGGGTCCAACATCACTGACACCTGCACTGAAATGCTAATGTGTGGAGTCTTACTG
AAAATTTCTTCTGGAAATATTCAAGAACGGGTGTTTTTCTTTTCGATAATCTTTGGTGTACTGCAAA
AGAAAACACAGACGGTTGAAGAACAGCAAGGCATCTACAGATGGACATCGGTACCTTTTTCGTGGCCGG
ATCAACACGAGGTGATGGAAGTGGAGAATGTGGATGATGGCACCCTGATTTCCATAGCAGTGGACAC
ATTGTTGTTAATGGATGGAAGATACATAACACAGCAAAAAATAAATGGTTTGTGTTGATGGCAAAAACA
CCTGAAGAGAAGCATGAATGTTTGAAGCTATTTTGAAGAAAAGAGAACGGCGGAAAGGTTTAAAATTA
GGAATGGAGCAAGATACCTGGGTCATGATCTCTGAACAGGGTGAGAACTTTATAAAATGATGTGCAGA
CAAGGAAATCTGATCAAAGACCGAAAGAGAAAAGTACTACGTTCCCTAAATGCTTTCTTGGAAAGCGAA
TTTGTGTCATGGCTGTTGGAAATTTGAGAGATTACAGGCCTGAGGAAGGCGTGCCTTTGGGACAAGCA
TTATTAGAAAATGGAATCATTACCATGTTACTGATAAACATCAATTCAAACCAGAACAGATGTTATAT
AGATTTTCGCTATGATGATGGAACATTTTATCCAAGAAATGAGATGCAGGACGTGATTTCAAAGGGTGA
AGATTATATTGCTGCTTCATAGCCTTTTACTCCAGTGATAAGAGATAAAGATTACCATTTAAGGACC
```



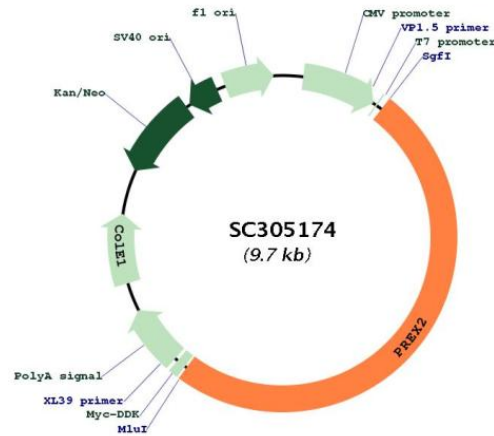
[View online >](#)

TACAAATCTGTGGTCATGGCCAACAACTGATAGACTGGTTAATTGCACAGGGAGATTGCCGCACCAGA
 GAAGAGGCAATGATATTTGGCGTTGGACTCTGTGACAATGGATTTATGCACCATGTCCTTGAAAAAGC
 GAATTCAAAGATGAACCCCTACTTTTCCGTTTTTTTTTCGGATGAGGAAATGGAGGGATCAAATATGAAA
 CATCGACTTATGAAACATGACTTAAAAGTTGTGGAAAAATGTTATAGCTAAGTCATTATTGATTAATCC
 AATGAAGGCAGCTATGGCTTTGGATTAGAAGACAAAAATAAGTTCCAATAATAAAGTTGGTAGAAAAAG
 GGATCTAATGCTGAGATGGCTGGCATGGAAGTCGGGAAAAAGATTTTTGCTATTAATGGTGACCTAGTT
 TTTATGAGACCTTCAATGAAGTGGATTGCTTCCGAAATCGTGTTTAAACAGCAGAAAAACCTCAAGA
 GTTCTTGTGAGCACAAGCCAAGAGAGACAGTGAAAAATCCAGATTCAGCTGATGGACTTGCTCCAG
 ATCCGGGGATTTGGCCCTTCTGTGTGCATGCTGTAGGAAGAGGAACTGTGGCTGCAGCAGCTGGTCTT
 CACCCTGGACAGTGCATTATCAAGGTGAATGGAATCAATGTCAGCAAAGAGACACATGCCAGTGTCAAT
 GCACACGTTACAGCCTGCAGGAAGTACAGGCGGCCAACGAAGCAAGATTCATACAATGGGTTTATAAT
 AGCATTGAGAGTCTCAAGAAGACCTTCAAAAACTCACTCCAAGCCCCCTGGAGATGAAGCAGGGGAT
 GCTTTTGACTGTAAGTAGAAGAGGTTATTGACAAATCAACACTATGGCCATCATTGATGGGAAGAAG
 GAGCATGTGAGTCTGACAGTGGACAATGCCACCTGGAATATGGTGTCTGTATGAGTACGACAGCACA
 GCTGGCATCAAGTCAATGTGGTGGAAAAGATGATTGAGCCCAAAGGTTTCTTCAGCTTAACTGCCAAG
 ATCTTGAAGCCCTGGCTAAAAGTATGAGCATTGTTGTACAAAATGTACCAGCCTAAAATCTCTAAT
 GAAGTGATTCTACTGACCTTCAGAGTAAATTCAGTGCCCTTTCAGTGAAAGAATTGAACACCTATGT
 CAGAGAATATCCAGTTATAAAAAAGTTTTCTCGTGTACTGAAGAATAGGGCCTGGCCTACTTTTAAACAG
 GCCAAATCTAAAATCTCCCCACTGCACAGCAGTATTTCTGCCCTACCAACTGCCATGTCAATGTGATG
 GAAGTTTCTTATCCCAAAACATCAACCTCTTGGGAAGTGCAATTTGGTGTTCAGTTGGATAGCAGGAAG
 CATAATCTCATGATAAAGAAAAACAATCTTCGGAGCAAGGAACTGAGCCCTATGGTGTACATTCAG
 CACACCATCACAAACATGGCGGCCCTTCAGGTCTGTCTCTGGGACAGCAGGATGGCCATGGTCTCAGG
 TATCTGCTAAAAGAAGAAGACTTAGAAACCAAGACATCTACAGAACTGCTGGGCAAACTTCAGACT
 GCACTGAAAGAGGTGGAGATGTGTGTTTGTCAAATAGATGACCTTCTGTCTTCAATAACATATTCTCT
 AAATTAGAACGTAAAGACATCAGAGGGCATAATACCAACAGACAGTGACAATGAGAAGGGAGAAAAGAAC
 AGCAAACGGGTATGTTTTAATGTAGCAGGAGATGAACAGGAAGATTCTGGTTCATGACACCATCAGCAAC
 AGAGACTCTTACAGTACTGCAACAGCAATAGGAATCCATCGCCTCCTTACCAGCATCTGCAGCAGC
 CAGTGCAGCTCGTATTTCCACAGTATGAAATGGACTCAGGTGATGAACTTCCCTTAAAGTGTTCGCATA
 TCTCATGATAAACAGGACAAGATACATAGTTGCCTTGAGCATCTTTTTCAGCCAGGTGGATTCAATTACC
 AATCTCTAAAAGGGCAGGCTGTTGTGAGGGCCTTTGACCAAACCAAGTATCTCACTCCAGGCCGAGGA
 TTGCAAGAATTTCAACAGGAAATGGAACCAAGCTGAGTTGTCCAAAAGGCTACGGCTTCATATCAAG
 CAAGATCCTTGGAAATCTCCAGCAGCTCCGGACTCTTGCTCAGAACATCAGGAAATTTGTTGAAGAG
 GTAAAAGTGTAGGCTACTCCTGGCTCTTCTGAATATTCAGATAGTGAGACACAGCTCCGTAGAGACATG
 GTTTTCTGCCAGACTCTTGTGGCCACTGTCTGTGCCTTCTCTGAGCAGCTCATGGCGGCCTTGAACCAG
 ATGTTTGAACAACAGCAAGGAAAAATGAGATGGAACTTGGGAAGCCAGCAGGAGGTGGCTGGACCAGATA
 GCGAATGCAGGTGTTCTTTTCACTTTCAGTCACTTCTGTACCAAACTTGACAGATGAACAAGCCATG
 TTAGAAGATACACTGGTTGCACTATTTGATTTGGAAAAGGTTTCCCTTTACTTTAAACCATCAGAAGAG
 GAACCTCTGGTTGCAATGTTCTCTTACATATCAAGCAGAAGGAAGTCGGCAAGCTCTGAAAGTTTAC
 TTCTACATTGATAGTTATCATTTTTGAACAACCTCCTCAACGGCTGAAAAATGGAGGAGGTTTAAAT
 CATCTGTTCTTTTTGCACAAGCACTAGAGAGCATGGAAGGATATTATTACAGAGACAATGTTTCTGTG
 GAAGAATTTCAAGCTCAGATAAATGCAGCCTCACTGAAAAAGGTCAAACAGTACAACCAGAAGCTCAGG
 GCATTCTACTTGGACAAGTCAAATTCACCACAAACTCCACATCCAAAGCTGCCTATGTAGATAAGCTA
 ATGAGGCCTCTCAACGCTTTGGATGAACTTTACCGACTGGTAGCCTCGTTTATCAGATCCAAGCGCACA
 GCTGCCTGTGCAAAACACAGCTTGCAGTCTTCTGGGGTTGGACTGCTGTCAAGTTTCTCGGAGCTGTGC
 AACAGGCTGGGCGCTGCCACATCATGTGCAGCAGCGGTGTGCATCGGTGCACCCTGAGCGTGACG
 CTGGAGCAAGCCATCATTCTGGCCAGAAGCCACGGACTGCCACCTCGTTACATCATGCAGGCTACAGAT
 GTGATGCGGAAGCAGGGAGCAAGAGTTCAGAACACAGCGAAGAATTTGGGAGTCAGAGACCGGACTCCA
 CAGTCTGCACCAAGGCTGTACAAGCTGTGCGAGCCACCTCCCCAGCTGGAGAAGAA**TGA**
ACGCGTACGCGGCCGCTCGAGCAGAACTCATCTCAGAAGAGGATCTGGCAGCAAATGATATCCTGGAT
 TACAAGGATGACGACGATAAGGTTTAAACGGCCGGC

Restriction Sites:

SgfI-MluI

Plasmid Map:



ACCN: NM_024870

Insert Size: 4821 bp

OTI Disclaimer: Our molecular clone sequence data has been matched to the reference identifier above as a point of reference. Note that the complete sequence of our molecular clones may differ from the sequence published for this corresponding reference, e.g., by representing an alternative RNA splicing form or single nucleotide polymorphism (SNP).

OTI Annotation: This TrueClone is provided through our Custom Cloning Process that includes sub-cloning into OriGene's pCMV6 vector and full sequencing to provide a non-variant match to the expected reference without frameshifts, and is delivered as lyophilized plasmid DNA.

Components: The ORF clone is ion-exchange column purified and shipped in a 2D barcoded Matrix tube containing 10ug of transfection-ready, dried plasmid DNA (reconstitute with 100 ul of water).

Reconstitution Method:

1. Centrifuge at 5,000xg for 5min.
2. Carefully open the tube and add 100ul of sterile water to dissolve the DNA.
3. Close the tube and incubate for 10 minutes at room temperature.
4. Briefly vortex the tube and then do a quick spin (less than 5000xg) to concentrate the liquid at the bottom.
5. Store the suspended plasmid at -20°C. The DNA is stable for at least one year from date of shipping when stored at -20°C.

RefSeq: [NM_024870.3](#)

RefSeq Size: 10768 bp

RefSeq ORF: 4821 bp

Locus ID: 80243

UniProt ID: [Q70Z35](#)

Cytogenetics: 8q13.2

MW: 182.6 kDa

Gene Summary: The protein encoded by this gene belongs to the phosphatidylinositol 3,4,5-trisphosphate (PIP3)-dependent Rac exchanger (PREX) family, which are Dbl-type guanine-nucleotide exchange factors for Rac family small G proteins. Structural domains of this protein include the catalytic diffuse B-cell lymphoma homology and pleckstrin homology (DHPH) domain, two disheveled, EGL-10, and pleckstrin homology (DEP) domains, two PDZ domains, and a C-terminal inositol polyphosphate-4 phosphatase (IP4P) domain that is found in one of the isoforms. This protein facilitates the exchange of GDP for GTP on Rac1, allowing the GTP-bound Rac1 to activate downstream effectors. Studies also show that the pleckstrin homology domain of this protein interacts with the phosphatase and tensin homolog (PTEN) gene product to inhibit PTEN phosphatase activity, thus activating the phosphoinositide-3 kinase (PI3K) signaling pathway. Conversely, the PTEN gene product has also been shown to inhibit the GEF activity of this protein. This gene plays a role in insulin-signaling pathways, and either mutations or overexpression of this gene have been observed in some cancers. [provided by RefSeq, Apr 2016]

Transcript Variant: This variant (1) represents the longer transcript and encodes the longer isoform (a).