

Product datasheet for **SC305081**

TAS2R7 (NM_023919) Human Untagged Clone

Product data:

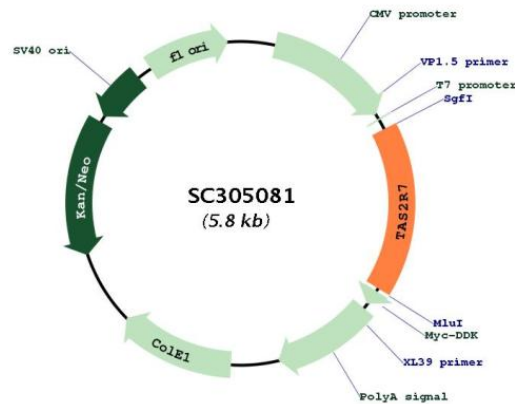
Product Type:	Expression Plasmids
Product Name:	TAS2R7 (NM_023919) Human Untagged Clone
Tag:	Tag Free
Symbol:	TAS2R7
Synonyms:	T2R7; TRB4
Mammalian Cell Selection:	Neomycin
Vector:	pCMV6-Entry (PS100001)
E. coli Selection:	Kanamycin (25 ug/mL)
Fully Sequenced ORF:	>SC305081 representing NM_023919. Blue=Insert sequence Red=Cloning site Green=Tag(s)

```
GCTCGTTT TAGTGAACCGTCAGAATTTTGT AATACGACTCACTATAGGGCGCCGGGAATTCGTCGACTG
GATCCGGTACCGAGGAGATCTGCCGCC CGCATCGCC
ATGGCAGATAAAGTGCAGACTACTTTATTGTTCTTAGCAGTTGGAGAGTTTTTCAGTGGGGATCTTAGGG
AATGCATTCATTGGATTGGTAAACTGCATGGACTGGGTCAAGAAGAGGAAAATTGCCTCCATTGATTTA
ATCCTCACAAGTCTGGCCATATCCAGAATTTGTCTATTGTGCGTAATACTATTAGATTGTTTTATATTG
GTGCTATATCCAGATGTCTATGCCACTGGTAAAGAAATGAGAATCATTGACTTCTTCTGGACACTAACC
AATCATTTAAGTATCTGGTTTGAACCTGCCTCAGCATTTACTATTTCTCAAGATAGGTAATTTCTTT
CACCCACTTTTCTCTGGATGAAGTGGAGAATTGACAGGGTGATTTCTGGATTCTACTGGGGTGCCTG
GTTCTCTCTGTGTTTATTAGCCTTCCAGCCACTGAGAATTTGAACGCTGATTTTCAGGTTTTGTGTGAAG
GCAAAGAGGAAAACAACTTAACCTGGAGTTGCAGAGTAAATAAACTCAACATGCTTCTACCAAGTTA
TTTCTCAACCTGGCAACGCTGCTCCCTTTTGTGTGTGCCTAATGTCCTTTTCTCTTGATCCTCTCC
CTGCGGAGACATATCAGGCGAATGCAGCTCAGTGCCACAGGGTGCAGAGACCCACAGCAGAAAGCCCAT
GTGAGAGCCCTGAAAGCTGTCAATTCCTTCTCTCTCTTTATTGCCTACTATTTGCCTTTCTCATT
GCCACCTCCAGCTACTTTATGCCAGAGACGGAATTAGCTGTGATTTTTGGTGAGTCCATAGCTCTAATC
TACCCCTCAAGTCATTCATTTATCTAACTACTGGGAACAATAAATTAAGACATGCATCTCTAAAGGTG
ATTTGAAAGTAATGTCTATTCTAAAAGGAAGAAAATTCCAACAACATAAACAATCTGA
ACGCGTACGCGGCCGCTCGAGCAGAACTCATCTCAGAAGAGGATCTGGCAGCAAATGATATCCTGGAT
TACAAGGATGACGACGATAAGGTTTAAACGGCCGGC
```

Restriction Sites: SgfI-MluI



[View online »](#)

Plasmid Map:


ACCN: NM_023919

Insert Size: 957 bp

OTI Disclaimer: Our molecular clone sequence data has been matched to the reference identifier above as a point of reference. Note that the complete sequence of our molecular clones may differ from the sequence published for this corresponding reference, e.g., by representing an alternative RNA splicing form or single nucleotide polymorphism (SNP).

OTI Annotation: This TrueClone is provided through our Custom Cloning Process that includes sub-cloning into OriGene's pCMV6 vector and full sequencing to provide a non-variant match to the expected reference without frameshifts, and is delivered as lyophilized plasmid DNA.

Components: The ORF clone is ion-exchange column purified and shipped in a 2D barcoded Matrix tube containing 10ug of transfection-ready, dried plasmid DNA (reconstitute with 100 ul of water).

Reconstitution Method:

1. Centrifuge at 5,000xg for 5min.
2. Carefully open the tube and add 100ul of sterile water to dissolve the DNA.
3. Close the tube and incubate for 10 minutes at room temperature.
4. Briefly vortex the tube and then do a quick spin (less than 5000xg) to concentrate the liquid at the bottom.
5. Store the suspended plasmid at -20°C. The DNA is stable for at least one year from date of shipping when stored at -20°C.

RefSeq: [NM_023919.2](#)

RefSeq Size: 1096 bp

RefSeq ORF: 957 bp

Locus ID: 50837

UniProt ID: [Q9NYW3](#)

Cytogenetics: 12p13.2

Protein Families: Transmembrane

Protein Pathways: Taste transduction

MW: 36.5 kDa

Gene Summary: This gene product belongs to the family of candidate taste receptors that are members of the G-protein-coupled receptor superfamily. These proteins are specifically expressed in the taste receptor cells of the tongue and palate epithelia. They are organized in the genome in clusters and are genetically linked to loci that influence bitter perception in mice and humans. In functional expression studies, they respond to bitter tastants. This gene maps to the taste receptor gene cluster on chromosome 12p13. [provided by RefSeq, Jul 2008]