

Product datasheet for **SC304807**

RNF150 (NM_020724) Human Untagged Clone

Product data:

Product Type:	Expression Plasmids
Product Name:	RNF150 (NM_020724) Human Untagged Clone
Tag:	Tag Free
Symbol:	RNF150
Mammalian Cell Selection:	Neomycin
Vector:	pCMV6-Entry (PS100001)
E. coli Selection:	Kanamycin (25 ug/mL)
Fully Sequenced ORF:	>SC304807 representing NM_020724. Blue=Insert sequence Red=Cloning site Green=Tag(s)

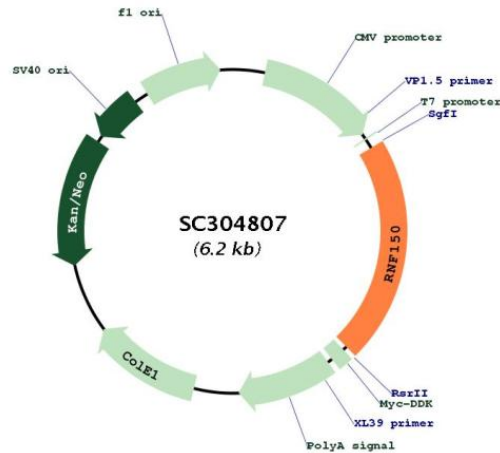
```
GCTCGTTTAGTGAACCGTCAGAATTTTGTAAACGACTCACTATAGGGCGGCCGGAATTCGTCGACTG
GATCCGGTACCGAGGAGATCTGCCGCCGCGATCGCC
ATGGCAATGTCTCTCATCCAAGCGTGTGCAGTCTGGCTCTCTCAACATGGCTGCTTTCCTTTGTTC
GTGCATCTGCTCTGCCTGGACTTACCCTGGCCGAGAAGGAGGAATGGTACACCGCCTTCGTGAACATC
ACCTACGCCGAGCCCGCCGACCCCGGGGCCGGGGCGGGCGGGCGGGCGGGCGGAGCTGCACACG
GAGAAGACGGAGTGGGGCGCTACGGAGAGCACTCGCCAAGCAGGACGCCCGGGGAGGTGGTCATG
GCCAGCTCGGCCACGACCGCTGGCTGCGACCCCAACCAAGTTCGCCGCCCGACCCGCGGCAAG
AACTGGATAGCCCTCATCCCCAAGGGCACTGCAGTACAGGGATAAGATCCGGAACCGTTCTGCAG
AACGCCTCAGCCGTGGTATCTTCAACGTGGGCTCCAACCAACGAGACCATCACCATGCCCCACGCG
GGTGTAGAAGACATCGTGGCCATAATGATTCTGAGCCAAAAGGGAAGGAGATAGTAAGCCTGCTGGAA
AGAAACATCACCGTGACAATGTACATCACCATCGGAACCCGGAACCTGCAGAAATATGTGAGCCGCACT
TCGTTTGTGTTTGTCTCCATCTCCTTATTGTCCTGATGATCATTTCCCTCGCATGGCTCGTCTTTAT
TACATCCAGAGGTTTCGATATGCAAATGCCAGGGATAGGAACAGCGCCGACTGGGGATGCAGCAAAG
AAAGCCATCAGCAAACCTCAGATCAGGACCATCAAGAAGGGTACAAGGAAACAGAGTCTGATTTTGAC
AACTGTGCAGTTTGTATTGAAGGTACAAGCCCAATGACGTTGTCCGGATCTGCCCTGCCGCATCTT
TTCCACAAGTCTGTGTTGACCCCTGGCTTCTAGACCATCGTACCTGTCCATGTGCAAGATGAACATT
CTTAAAGCCCTAGGGATCCCGCCAATGCCGACTGCATGGACGACTTGCCCACTGACTTCGAGGGCTCT
CTGGGAGGTCCACCCACCAACCAGATCACAGGTGCCAGCGACACAACAGTGAATGAAAGTTCAAGTCACT
TTGGACCTGCTGTCCGGACTGTGGGAGCCTTGACAGGTGGTCCAGGATACAGACCCCATCCCCAGGAG
GGAGACGTCACTTTACTACTAACAGTGAAGGAGCCAGCTGTAAGCAGTGATTCTGACATTTCTTTG
ATCATGGCAATGGAGTTGGACTGTCTGATGTAGAAGTTCCTGACTGACCAGGACTGTGAAGAAGTGAAA
TCTTGA
AGCGGACCGACGCGTACGCGCCGCTCGAGCAGAAACTCATCTCAGAAGAGGATCTGGCAGCAAATGAT
ATCCTGGATTACAAGGATGACGACGATAAGGTTTAA
```

Restriction Sites: SgfI-RsrII



[View online »](#)

Plasmid Map:



ACCN: NM_020724

Insert Size: 1317 bp

OTI Disclaimer: Our molecular clone sequence data has been matched to the reference identifier above as a point of reference. Note that the complete sequence of our molecular clones may differ from the sequence published for this corresponding reference, e.g., by representing an alternative RNA splicing form or single nucleotide polymorphism (SNP).

OTI Annotation: This TrueClone is provided through our Custom Cloning Process that includes sub-cloning into OriGene's pCMV6 vector and full sequencing to provide a non-variant match to the expected reference without frameshifts, and is delivered as lyophilized plasmid DNA.

Components: The ORF clone is ion-exchange column purified and shipped in a 2D barcoded Matrix tube containing 10ug of transfection-ready, dried plasmid DNA (reconstitute with 100 ul of water).

Reconstitution Method:

1. Centrifuge at 5,000xg for 5min.
2. Carefully open the tube and add 100ul of sterile water to dissolve the DNA.
3. Close the tube and incubate for 10 minutes at room temperature.
4. Briefly vortex the tube and then do a quick spin (less than 5000xg) to concentrate the liquid at the bottom.
5. Store the suspended plasmid at -20°C. The DNA is stable for at least one year from date of shipping when stored at -20°C.

RefSeq: [NM_020724.1](#)

RefSeq Size: 4661 bp

RefSeq ORF: 1317 bp

Locus ID: 57484

UniProt ID: [Q9ULK6](#)

Cytogenetics: 4q31.21

Protein Families: Druggable Genome, Transmembrane

MW: 48.1 kDa