

Product datasheet for **SC304382**

RWDD1 (NM_016104) Human Untagged Clone

Product data:

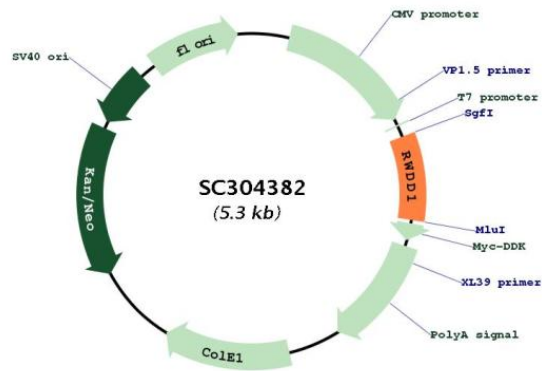
Product Type:	Expression Plasmids
Product Name:	RWDD1 (NM_016104) Human Untagged Clone
Tag:	Tag Free
Symbol:	RWDD1
Synonyms:	CGI-24; PTD013
Mammalian Cell Selection:	Neomycin
Vector:	pCMV6-Entry (PS100001)
E. coli Selection:	Kanamycin (25 ug/mL)
Fully Sequenced ORF:	>SC304382 representing NM_016104. Blue=Insert sequence Red=Cloning site Green=Tag(s)

```
GCTCGTTTAGTGAACCGTCAGAATTTGTAAATACGACTCACTATAGGGCGCCGGGAATTCGTCGACTG
GATCCGGTACCGAGGAGATCTGCCGCCGCGATCGCC
ATGGTGATGATTTTACTCTAGTGACAGCTGTGCAAGAAAAATTAATGAAATAGTAGATCAGATAAAA
ACTAGAAGAGAAGAAGAAAAGAAACAAAAAGAAAAGCAGAAGAAGCTGAAAAGCAATTATCCAT
GGTACTCCAGTTACAATTGAGAATTTCTAAATTGGAAAGCCAAGTTTGATGCAGAACTCTGGAAATT
AAAAAGAAAAGGATGAAAGAAGAACAAGCAGGAAAAATAAATTAAGTGGGAAACAACATTTGAA
ACAGATCATAATCTTGACACATCTGATATCCAGTTCTTGGAGGATGCTGGAAACAACGTGGAGGTAGAT
GAGTCTTTGTTCCAAGAAATGGATGACTTGGAGCTGGAGGATGATGAAGATGATCCAGACTATAATCCT
GCTGACCCAGAGAGTGACTCAGCTGACTAA
ACGCGTACGCGGCCGCTCGAGCAGAACTCATCTCAGAAGAGGATCTGGCAGCAAATGATATCCTGGAT
TACAAGGATGACGACGATAAGGTTAAACGGCCGGC
```

Restriction Sites: Sgfl-Mlul



[View online »](#)

Plasmid Map:


ACCN:	NM_016104
Insert Size:	444 bp
OTI Disclaimer:	Our molecular clone sequence data has been matched to the reference identifier above as a point of reference. Note that the complete sequence of our molecular clones may differ from the sequence published for this corresponding reference, e.g., by representing an alternative RNA splicing form or single nucleotide polymorphism (SNP).
OTI Annotation:	This TrueClone is provided through our Custom Cloning Process that includes sub-cloning into OriGene's pCMV6 vector and full sequencing to provide a non-variant match to the expected reference without frameshifts, and is delivered as lyophilized plasmid DNA.
Components:	The ORF clone is ion-exchange column purified and shipped in a 2D barcoded Matrix tube containing 10ug of transfection-ready, dried plasmid DNA (reconstitute with 100 ul of water).

Reconstitution Method:

1. Centrifuge at 5,000xg for 5min.
2. Carefully open the tube and add 100ul of sterile water to dissolve the DNA.
3. Close the tube and incubate for 10 minutes at room temperature.
4. Briefly vortex the tube and then do a quick spin (less than 5000xg) to concentrate the liquid at the bottom.
5. Store the suspended plasmid at -20°C. The DNA is stable for at least one year from date of shipping when stored at -20°C.

RefSeq: [NM_016104.3](#)

RefSeq Size: 1690 bp

RefSeq ORF: 444 bp

Locus ID: 51389

UniProt ID: [Q9H446](#)

Cytogenetics: 6q22.1

MW: 17.1 kDa

Gene Summary: Protects DRG2 from proteolytic degradation.[UniProtKB/Swiss-Prot Function]
Transcript Variant: This variant (2) differs in its 5' UTR, and initiates translation at a downstream start codon, compared to variant 1. The encoded isoform (b) has a shorter N-terminus, compared to isoform a. Variants 2 and 3 encode the same isoform.