

Product datasheet for SC304192

Acinus (ACIN1) (NM_014977) Human Untagged Clone

Product data:

Product Type:	Expression Plasmids
Product Name:	Acinus (ACIN1) (NM_014977) Human Untagged Clone
Tag:	Tag Free
Symbol:	ACIN1
Synonyms:	ACINUS; ACN; fSAP152
Mammalian Cell Selection:	Neomycin
Vector:	pCMV6-Entry (PS100001)
E. coli Selection:	Kanamycin (25 ug/mL)
Fully Sequenced ORF:	>SC304192 representing NM_014977. Blue=Insert sequence Red=Cloning site Green=Tag(s)

```
GCTCGTTTGTAGTGAACCGTCAGAATTTTGTAAACGACTACTATAGGGCGCCGGGAATTCGTCGACTG
GATCCGGTACCGAGGAGATCTGCCGCCGCGATCGCC
ATGTGGAGACGGAACATCCGAGGACATCCGGAGGAACCCGGGGAGTTCTGAGTGGTAATCGAGGGGTA
GAGTATGGCAGTGGGCGGGTCACTCGGTACGTTCAAGGGCGTTGGCGGAAATACCGAAGATGCC
GAAGCCGTCGGGACGACCCGAGTACCTCACGCAAGATGGCGGAGCTGGAGGAGTGACTCTGGACGGG
AAGCCTCTTCAGGCGCTGCGGGTGACCGACCTGAAGGCCGCACTGGAGCAGCGAGGCTAGCCAAGAGC
GGGAGAAAGAGTCCCTGGTCAAGCGGCTCAAAGGGGCTAATGCTAGAAAATTCAGAAACACTCA
ACACCCATGCTGCATTCAGCCAAATCCAGATTGGTGAGGAAATGAGCCAGAACAGTTTCATAAAA
CAGTATCTGGAAGCAGCAGGAGCTACTTAGGCAGCGTCTGGAACGTGAAGCTCGAGAAGCTGCAGAA
CTTGAAGAAGCTTCAGCTGAGTCGGAGGACGAGATGATCCATCCTGAGGGAGTGGCTTCCCTGCTGCCT
CCTGACTTTCAGAGCAGCCTGGAGAGACCAGAGCTGGAGCTCAGCAGACATTCGCCAGAAAAAGTCC
TCAATTTCTGAAGAGAAAGGTGACTCTGATGATGAGAAACCAAGGAAAGGAGAAAGACGATCATCTAGG
GTCAGACAGGCAAGAGCAGCTAAACTGTCTGAGGGCAGCCAACCTGCTGAGGAGGAAGAGGATCAAGAA
ACACCTTCCAGAAACCTAAGGGTCAGAGCAGATCGAAATTTGAAAACAGAGGAGGAAGAAGAGGAGGAG
GAGGAGGAGGAAGAAGATGATGAAGAAGAGGAAGGTGATGATGAGGGACAAAAATCTAGGGAGGCCACCA
ATCCTGAAAGAGTTTAAGGAAGAAGGGGAAGAGATACCTAGAGTAAAACAGAGGAGATGATGGATGAG
AGACCCAAAACAAGATCCAGGAACAGGAGGTGTTAGAGAGAGGAGGGAGATTTACAAGATCCAGGAA
GAGGCTAGAAAAAGTCATCTGGCCAGACAGCAGAGGAGAAGGAAATGAAAACAACATCTCCCTTGAG
GAGGAAGAAAGAGAAATAAAATCTTACAAAGGCTTAAAGGAAAAATCGAAGTCTCCTTCCCTCCTCGA
CTGACTGAAGATCGAAAGAAGGCCTCACTTGTAGCGCTGCCAGAGCAAACCTGCCAGCGAGGAGGAGACT
CCTCCACCTTTACTAACAAAGGAAGCATCTTCTCCACCACCTCATCCACAGCTCCATAGCGAAGAAGAA
ATAGAGCCATGGAAGGCCAGCCCCCTGTCTCCTCATTAGTTATCTCCTCCTAATACAGATGCTGAC
ACCAGGGAGCTATTAGTATCTCAGCATACTGTCCAGTTGGTAGGAGGCTGTCTCCTTTGTCAAGTCTT
TCAGACACCAAAGCAGAATCTCCAGCAGAGAAAGTGCCAGAGGAGAGTGTCTGCCTCTGTTTCAGAAA
```



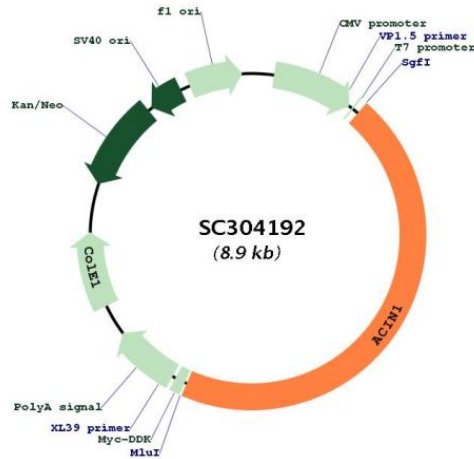
View online >

AGCACACTGGCTGACTACTCAGCCCAGAAGGATCTTGAACCTGAGTCAGACAGATCTGCTCAGCCCCTC
 CCTCTAAAAATTGAGGAATTAGCACTGGCCAAAGGAATCACTGAAGAATGTCTGAAAACAGCCATCTTTG
 GAACAGAAGGAAGGCAGAAGAGCTTCTCATACCTTCTCCAAGCCACAGATTGAAAACAGTCAGCTGAT
 TCATCCTCTAGCCGGTCTCTCATCTTCTCCTCCAGTTCTAGATCAAGATCTCGCTCTCCTGACAGT
 TCAGGTTCTCGGTCTCATTACCCTCAGATCCAAGCAGAGAGATGTAGCCCAGGCACGTAATCATGCC
 AACCCCTCGTGGTAGACCAAGATGGGCTCCAGATCAACATCAGAGTCCAGATCAAGGTCACGTTACGCT
 TCTCGTTCAGCATCAAGCAACAGCAGAAAAATCTCTGAGCCCTGGAGTCTCCAGGGACAGCAGCCAGC
 TATACTGAAACCAAAGATCCCTCTTCTGGTCAGGAGGTTGCAACTCCACCAGTGCCACAACCTGCAGGTC
 TGTGAGCCAAAGGAGAGGACTTCCACCTCCTCATCCTCTGTCCAAGCAAGGCGTCTGAGTCAGCCTGAA
 TCAGCTGAAAAGCATGTGACCCAGAGGTTACAGCCTGAGCGGGGAGCCAAAGAAGTGTGAAGCTGAA
 GAGGCAGAGCCACCAGCTGCCACACAGCCCAAACCTCAGAGACTCAGACCTCTCATCTGCCAGAATCA
 GAAAGAATTCATCACACTGTTGAGGAGAAGGAGGAAGTGACCATGGACACAAGTAAAACAGACCTGAA
 AATGATGTTCCAGAACCTCCCATGCCTATTGCAGACCAAGTCAGCAATGATGACCGCCCGGAGGGCAGT
 GTTGAAGATGAGGAGAAGAAAGAGAGCTCGCTGCCAAAATCATTCAAGAGGAAGATCTCCGTTGTCTCA
 GCTACCAAGGGGGTGCCAGCTGGAACAGTGACACAGAGGGGGGCCAGCCTGGTCCGAAACGACGCTGG
 GGAGCCAGCACAGCCACCACAGAAGAAACCTTCCATCAGTATCACCACCTGAATCACTAAAGAGCCTC
 ATCCCCGACATCAAACCCCTGGCGGGGCAGGAGGCTGTTGTGGATCTTATGCTGATGACTCTCGCATC
 TCTGAGGATGAGACAGAGCGTAATGGCGATGATGGGACCCATGACAAGGGGCTGAAAATATGCCGGACA
 GTCACCTCAGGTAGTACCTGCAGAGGGCCAGGAGAATGGGCAGAGGGGAAGAAGAGGAAGAAGAGAA
 CCTGAAGCAGAACCTCCTGTACCTCCCCAGGTGTGAGTAGAGGTGGCCTTGCCCCACCTGCAGAGCAT
 GAAGTAAAGAAAGTGACTTTAGGAGATACCTTAACTCGACGTTCCATTAGCCAGCAGAAGTCCGGAGTT
 TCCATTACCATTGATGACCCAGTCCGAAGTCCAGGTTGCCCTCCCCACCCGGGCAAGATTAGCAAC
 ATTGTCATATCTCAAATTTGGTCCGCTTTCACTTTAGGCCAGCTAAAGGAGTTGTTGGGGGCACA
 GGAACCTTGGTGGAAAGAGCCTTCTGGATTGACAAGATCAAATCTCATTGCTTTGTAACGTAATCAACA
 GTAGAGGAAGCTGTTGCCACCCGCACAGCTCTGCACGGGGTCAAATGGCCCCAGTCCAATCCCAAATTC
 CTTTGTGCTGACTATGCCGAGCAAGATGAGCTGGATTATCACCGAGGCTCTTGGTGGACCGTCCCTCT
 GAAACTAAGACAGAGGAGCAGGGAATACCACGGCCCTGCACCCCCACCCCCACCCCGGTCCAGCCA
 CCACAGCACCCCGGGCAGAGCAGCGGGAGCAGGAACGGGCAGTGCAGGAAACAGTGGGCAGAACGGGAA
 CGGGAAATGGAGCGGGGAGCGGACTCGATCAGAGCGTGAATGGGATCGGGACAAAGTTCGAGAAGGG
 CCCCCTTCCCGATCAAGGTCCCCTGACCGCCGCCAAGGAACGTGCGAAGTCTAAAGAAAAGAAGAGT
 GAGAAGAAAGAGAAAGCCAGGAGGAACCACTGCCAAGCTGCTGGATGACCTTTTCCGAAAGACCAAG
 GCAGCTCCCTGCATCTATTGGCTCCCACTGACTGACAGCCAGATCGTTACGAAAGAGGCAGAGCGGGCC
 GAACGGGCCAAGGAGCGGGAGAAGCGGGCAAAGGAGCAAGAAGAAGAAGCAAAAAGGAGCGGGAGAAG
 GAAGCCGAGCGGGAACGGAACCGACAGCTGGAGCGAGAGAAACGTGCGGAGCACAGTCCGGAGAGGGAC
 AGGGAGAGAGAGAGAAAGGGAGCGGGACAGGGGGACCGAGATCGGGATAGGGAAAGGGACCGAGAA
 CGAGGCAGGGAAAGGGATCGCAGGGACACCAAGCGCCACAGCAGAAGCCGGAGTCCGGAGCACACCTGTG
 CGGGACCGGGTGGGCGCCGCTAG
 ACGCGTACGCGGCCGCTCGAGCAGAACTCATCTCAGAAGAGGATCTGGCAGCAAATGATATCCTGGAT
 TACAAGGATGACGACGATAAGGTTTAAACGGCCGCGC

Restriction Sites:

SgfI-MluI

Plasmid Map:



ACCN: NM_014977

Insert Size: 4026 bp

OTI Disclaimer: Our molecular clone sequence data has been matched to the reference identifier above as a point of reference. Note that the complete sequence of our molecular clones may differ from the sequence published for this corresponding reference, e.g., by representing an alternative RNA splicing form or single nucleotide polymorphism (SNP).

OTI Annotation: This TrueClone is provided through our Custom Cloning Process that includes sub-cloning into OriGene's pCMV6 vector and full sequencing to provide a non-variant match to the expected reference without frameshifts, and is delivered as lyophilized plasmid DNA.

Components: The ORF clone is ion-exchange column purified and shipped in a 2D barcoded Matrix tube containing 10ug of transfection-ready, dried plasmid DNA (reconstitute with 100 ul of water).

Reconstitution Method:

1. Centrifuge at 5,000xg for 5min.
2. Carefully open the tube and add 100ul of sterile water to dissolve the DNA.
3. Close the tube and incubate for 10 minutes at room temperature.
4. Briefly vortex the tube and then do a quick spin (less than 5000xg) to concentrate the liquid at the bottom.
5. Store the suspended plasmid at -20°C. The DNA is stable for at least one year from date of shipping when stored at -20°C.

RefSeq: [NM_014977.3](#)

RefSeq Size: 4951 bp

RefSeq ORF: 4026 bp

Locus ID: 22985

UniProt ID: [Q9UKV3](#)

Cytogenetics: 14q11.2

Protein Pathways: Spliceosome

MW: 151.9 kDa

Gene Summary: Apoptosis is defined by several morphologic nuclear changes, including chromatin condensation and nuclear fragmentation. This gene encodes a nuclear protein that induces apoptotic chromatin condensation after activation by caspase-3, without inducing DNA fragmentation. This protein has also been shown to be a component of a splicing-dependent multiprotein exon junction complex (EJC) that is deposited at splice junctions on mRNAs, as a consequence of pre-mRNA splicing. It may thus be involved in mRNA metabolism associated with splicing. Alternatively spliced transcript variants encoding different isoforms have been described for this gene. [provided by RefSeq, Oct 2011]
Transcript Variant: This variant (1) represents the longest transcript and encodes the longest isoform (1), also known as ACINUS-L.