

Product datasheet for **SC303875**

SARDH (NM_007101) Human Untagged Clone

Product data:

Product Type:	Expression Plasmids
Product Name:	SARDH (NM_007101) Human Untagged Clone
Tag:	Tag Free
Symbol:	SARDH
Synonyms:	BPR-2; DMGDHL1; SAR; SARD; SDH
Mammalian Cell Selection:	Neomycin
Vector:	pCMV6-Entry (PS100001)
E. coli Selection:	Kanamycin (25 ug/mL)



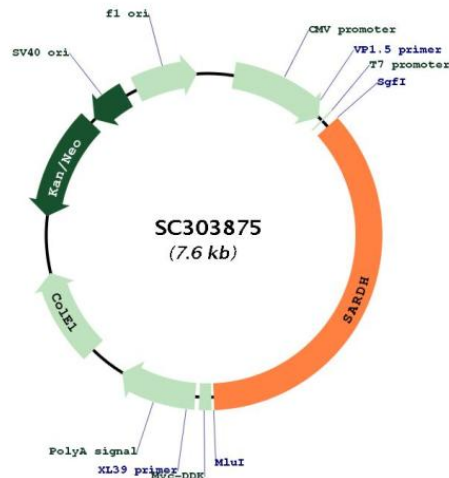
[View online »](#)

Fully Sequenced ORF: >SC303875 representing NM_007101.
 Blue=Insert sequence Red=Cloning site Green=Tag(s)

```

GCTCGTTTAGTGAACCGTCAGAATTTTGTAAACGACTCACTATAGGGCGGCCGGGAATTCGTGACTG
GATCCGGTACCGAGGAGATCTGCCGCCCGGATCGCC
ATGGCCTCACTGAGCCGAGCCCTACGTGTGGCTGCTGCCACCCTCGCCAGAGCCCTACCCGGGGCATG
GGGCCATGCAACCTGTCCAGCGCAGCTGGCCCCACAGCCGAGAAGAGTGTCCATATCAGCGGACCCTG
AAGGAGGGACAGGGCACCTCGGTGGTGGCCCAAGGCCAAGCCGGCCCTGCCACGACGGCCAACGTG
GTGGTCATTGGTGGAGGAGCTTGGGCTGCCAGACCCTGTACCACCTGGCCAAGCTGGGCATGAGTGGG
GCGGTGCTGCTGGAGCGGGAGCGGCTGACCTCCGGGACCACCTGGCACACGGCAGGCCTGCTGTGGCAG
CTGCGGCCAGTGACGTGGAGGTGGAGCTTCTGGCCCACTCGCGGGTGGTGGAGCCGGGAGCTGGAG
GAGGAGACGGGACTACACACGGGCTGGATCCAGAATGGGGCCTCTTCATCGCTCCAACCGGCAGCGC
CTGGACGAGTACAAGAGGCTCATGTGCTGGGCAAGGCGTATGGTGTGGAATCCCATGTGCTGAGCCCG
GCAGAGACCAAGACTCTGTACCCGCTGATGAATGTGGACGACCTCTACGGGACCCTGTATGTCCGCAC
GACGGTACCATGGACCCCGCTGGACCTGTACCACCCTGCCAGGGCAGCTTCTGCCGAGGAGCACAG
GTATTGAGAAGTGCCAGTACCGGCATTCTGTGTGGACGGATGATTTGGGGTGGCGGGTGGCGG
GGTGTGGAGACTCAGCATGGTTCATCCAGACACCCTGCGTGGTCAACTGTGAGGAGTGTGGGCAAGT
GCTGTGGGCCGGATGGCTGGAGTCAAGGTCCCCTGGTGGCCATGCACCATGCCTATGCTGTACCAGG
CGCATCGAGGGGATTGAGAAATGCCCAATGTCCTGTATCATGATGCCTCTGTCTACCTCCGCTCCAA
GGGGATGCCTTGCTGTGGTGGCTATGAGGCCAACCCATCTTTGGGAGGAGTGTGAGACAAGTTT
GCCTTCGGCTCTTTGACCTGGACTGGGAGGTGTTACCCAGCACATTGAAGGCCCATCAACAGGGTC
CCCGTGTGGAGAAGACAGGAATCAAGTCCACGGTCTCGGGCCCTGAATCCTTCACGCCGACCAAG
CCCTGTGGGGAGGCACCTGAGCTCCGAGGGTCTTCTGGGCTGTGGCTTCAACAGCGCAGGAATG
ATGCTGGGTGGTGTGGGACAGGAGCTGGCCACTGGATCATCCATGGGCGCCCGGAGAAGGACATG
CATGGCTATGACATCAGCGCTTCCATCACTCGCTCACGACCACCCCGCTGGATCCGAGAGCGAAGC
CATGAGTCTACGCCAAGAACTACTCCGTGCTTCCCCACGATGAGCCGCTGGCCGGGCGCAACATG
AGGAGAGACCCGCTGCACGAGGAACTCCTTGGACAAGGCTGCGTGTCCAGGAGCGGCATGGCTGGGAG
CGACCGGGATGGTTTATCCCGAGGCCAGCTCCGGTCTCGAGTACGACTACTACGGGCTTACGGG
AGCCGCGCGCACGAGGACTACGCTACCGCAGGCTGCTGGCAGACGAGTACACCTTCGCCTTCCCGCC
CACCACGACACGATCAAGAAGGAGTGCCTGGCCTGCAGAGGGGCCCGCTGTGTTGACATGCTCTAC
TTCGGGAAGTTTACCTGGTGGGCTGGATGCAAGGAAGGCTGCCGACTGGCTCTTCTCCGAGATGTC
AGCCGACCCCGAGCTCCACCGTACACGTGCATGCTCAACCACCGTGGGGCACCGAGAGTGACCTG
ACTGTCAGCCGCCTGGACCCAGCCACCAGGCCTCCCCGCTGGCCCCGCTTTGAAGGGGACGGTTAC
TACCTGGCCATGGGCGGGGCCGTGGCCAGCACAAGTGGTCCCACATCACCACCGTGTGACAGGACCAG
AAGTCCCAGTGCCAGCTCATCGACAGCTCCGAGGACCTGGGATGATCAGTATCCAGGGCCAGCCAGC
CGAGCCATTTGACAGGAGTGTGGACGACAGCTGAGCAACGAGGCCTTCCCGTCTCCACCCACAAG
CTACTGAGAGCCGAGGGCACCTGGTCCGAGCCATGCGGCTGTCTTTGGGGGAGTGGGCTGGGAG
CTGCACATTTCAAAGGCGTCTGCTGCCTGTGTACCGGGCTGTGATGGCCGCGGTGCCAAGCACGGC
TCATCAACGCAGGGTACCGGCCATCGACTCCCTGAGCATTGAGAAAGGCTACCGGCACCTGGCAGCG
GACCTGCGGCCAGACGACAGCCCTGGAGGCAGGCTGGCCTTCACTGCAAGCTCAAGTCGCCGGTG
CCCTTCTGGGGAGGAGGCCCTGGAGCAGCAGCGGGCCGAGGCTCCGCCGGCGCTGGTGTGCTTC
ACCATGGAGGACAAAGTACCCATGTTTGGCCTGGAGGCCATCTGGAGGAACGGCCAAAGTGGTGGCCAT
GTCCGGAGGGCTGACTTTGGTTTCGCCATCGACAAGACCATCGCCTACGGTTACATCCATGACCCAGC
GGTGGGCCGTCTCGCTGGACTTTGTAAGAGCGGGGACTATGCCCTGGAGAGAATGGGGGTGACCTAT
GGTGGCCAGGCTACCTGAAGTCGCCCTTCGACCCCAACAACAAGAGGGTGAAGGGAATCTACTGA
ACGGTACGCGGCCGCTCGAGCAGAACTCATCTCAGAAGAGGATCTGGCAGCAATGATATCTGGAT
TACAAGGATGACGACGATAAGGTTTAAACGGCCGGC
  
```

Restriction Sites: SgfI-MluI

Plasmid Map:


ACCN: NM_007101

Insert Size: 2757 bp

OTI Disclaimer: Our molecular clone sequence data has been matched to the reference identifier above as a point of reference. Note that the complete sequence of our molecular clones may differ from the sequence published for this corresponding reference, e.g., by representing an alternative RNA splicing form or single nucleotide polymorphism (SNP).

OTI Annotation: This TrueClone is provided through our Custom Cloning Process that includes sub-cloning into OriGene's pCMV6 vector and full sequencing to provide a non-variant match to the expected reference without frameshifts, and is delivered as lyophilized plasmid DNA.

Components: The ORF clone is ion-exchange column purified and shipped in a 2D barcoded Matrix tube containing 10ug of transfection-ready, dried plasmid DNA (reconstitute with 100 ul of water).

Reconstitution Method:

1. Centrifuge at 5,000xg for 5min.
2. Carefully open the tube and add 100ul of sterile water to dissolve the DNA.
3. Close the tube and incubate for 10 minutes at room temperature.
4. Briefly vortex the tube and then do a quick spin (less than 5000xg) to concentrate the liquid at the bottom.
5. Store the suspended plasmid at -20°C. The DNA is stable for at least one year from date of shipping when stored at -20°C.

RefSeq: [NM_007101.3](#)

RefSeq Size: 3398 bp

RefSeq ORF: 2757 bp

Locus ID: 1757

UniProt ID: [Q9UL12](#)

Cytogenetics: 9q34.2

Protein Pathways: Glycine, serine and threonine metabolism, Metabolic pathways

MW: 101 kDa

Gene Summary: This gene encodes an enzyme localized to the mitochondrial matrix which catalyzes the oxidative demethylation of sarcosine. This enzyme is distinct from another mitochondrial matrix enzyme, dimethylglycine dehydrogenase, which catalyzes a reaction resulting in the formation of sarcosine. Mutations in this gene are associated with sarcosinemia. Alternatively spliced transcript variants have been described. [provided by RefSeq, Oct 2008]
Transcript Variant: This variant (1) represents the longer transcript. Both variants 1 and 2 encode the same isoform.