

Product datasheet for **SC303681**

TAF1C (NM_005679) Human Untagged Clone

Product data:

Product Type:	Expression Plasmids
Product Name:	TAF1C (NM_005679) Human Untagged Clone
Tag:	Tag Free
Symbol:	TAF1C
Synonyms:	MGC:39976; SL1; TAFI95; TAFI110
Mammalian Cell Selection:	Neomycin
Vector:	pCMV6-Entry (PS100001)
E. coli Selection:	Kanamycin (25 ug/mL)



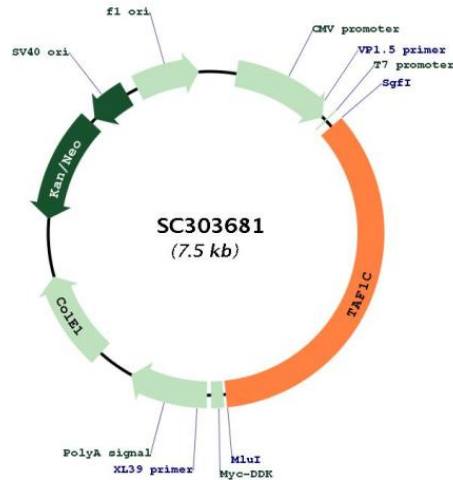
[View online »](#)

Fully Sequenced ORF: >SC303681 representing NM_005679.
 Blue=Insert sequence Red=Cloning site Green=Tag(s)

```

GCTCGTTTAGTGAACCGTCAGAATTTTGTAAACGACTCACTATAGGGCGGCCGGGAATTCGTGACTG
GATCCGGTACCGAGGAGATCTGCCGCCCGCATCGCC
ATGGACTTCCCCAGCTCCCTCCGCCCTGCATTGTTTCTGACCGGCCCCCTTGGTCTGAGCGACGTCCTT
GACCTCTCTTTTCATGTGCAGCTGGCGAGACGACTGACTCTGCCAGAGGCCAGCCCCAGAACTCAGAG
AATGGGGCACTGCATGTGACCAAGGACCTGCTGTGGGAGCCGGCAACCCCTGGGCCCTCTCCCATGCTG
CCTCCCTCATCGATCCCTGGGACCCTGGCCTGACTGCCCGGACCTGCTTTTCCGCGGAGGGTACCGG
TATCGGAAGCGCCCGAGTCGTGCTGGATGTGACTGAGCAGATCAGCCGGTTCTCTTGGATCATGGA
GACGTAGCCTTTGCGCCCTGGGGAAGCTGATGCTGGAGAATTTCAAGCTGGAGGGAGCGGGGAGCCGC
ACTAAGAAGAAGACAGTGGTCAGTGTGAAGAAGCTGCTCCAGGACCTCGGTGGACACCAGCCCTGGGGG
TGTCCTGGGCTTACCTCAGCAACCGACAGCGCCGTTCTCTATCCTCGGGGGCCCCATCTGGGCAGC
TCGGTGGCGAGCCACTTGGCAGAGCTGCTGCACGAGGAGCTGGTCTGCGGTGGGAGCAGCTGCTTCTG
GATGAGGCCTGCACTGGGGCGCGCTGGCTGGGTTCTGGAAGGACACCCAGTTCCGGCAGCTGGTC
TACCCTGCTGGAGCGCCAGGACAGGCTGCATTTCCAAGAGGTGTTCTGACCCAGGTGACAATCCC
CAATTCCTTGGGAAACCTGGACGCATCCAGCTCCAGGGACCTGTCCGGCAAGTGGTGACATGCACCGTC
CAGGGAGAAAGTAAGGCCCTTATACACTTTCCTCCCTCACTGGCTGACCTGCTACCTGACCCCTGGC
CCTTTCCATCCCTCCTCAGCTCTGCTGGCCGTCGCTCTGACTACCCTGTGCCGTGTGGAAGTTTGGT
AAACAGTGGCAGCCAACCTTCTGCAGGCAATGCAGGTGGAGAAAGGGGCCACGGGGATCAGCCTCAGC
CCTCACCTGCCGGGGAGCTGGCCATCTGCAGCCGCTCGGGAGCCGTCTGCCTGTGGAGCCCTGAGGAT
GGGCTCGGCAAACTACAGGGACCCTGAGACCCTCGTGTCCGGGACTCCTCTTCGTGGCGTTGGGCA
GACTTCACTGCGCACCTCGGGTGTGACCGTGGGTGACCGCAGCGAGTGAAGATGCTGGACAGCAG
GGCCCGCGGGCTGTGGTCTGTTGCTTTTTCGTTTGGGGCAGAGGCTTGTGCCAGAAAGGGGAACGT
GTCCTGCTTACCCAGTACCTGGGGCACTCCAGCCCAAATGCCTCCCCCTACTTTCATCTCGTCTGT
ACCCAGTCTCTCTACCTAGTGGACGAGCGCCTTCCCCTGGTGCCGATGCTGAAGTGAACCATGGC
CTCCCCTCCCCGCTCCTGCTGGCCGACTGCTGCCTCCGCCCCGGCCAGCTGCGTGCAGCCCTGCTC
CTCGGAGGCCAGGGTGGGAGCTGCAGCTGCTGCACCTGGCAGGAGAAGGGGCGTGGTGGCCCGCTG
GCAGGCCCCCCCCAGTCTTTCCTTCCAGGATCGACTCCCTCCCTGCATTTCTCTGCTGGAGCCTAAG
ATCCAGTGGCGGCTGCAGGAGCGCTGAAAGCACCGACCATAGGTCTGGTGGCGTGTCCCGCCCTTG
CCCTCAGCGCCACACCAGGCCTGGTGTCTTCCAGCTCTCGGCGCGGGAGATGTCTTCTACCAGCAG
CTCCGCCCCAGGTGGACTCCAGCTCCGAGAGATGCTGGGCCCTCTGGCGACACCCAACCTGACTGC
CATGCCCCACAGCTTCTGGACCTCCAGGACTGCCGGCTGCAGCCAGTGGCTGAAGGCCCTGCTA
AAAGTGGCCCTGGCTCCTCCTGTGTGGACAGCACCCACCTTACCACCGCCAGATGCTGGGAGCACA
GAGCTGCGGAGGGAGGAAGGAAGGGCAGCGGCTGGGTGTGCTCCGCAAGGCCATGGCCCGAGGGCAG
CTCCTGCTGCAGAGAGACCTGGGCTCCCTCCCTGCGGCAGAGCCACCCCTGCACCCGAGTCAGGCCTA
GAGGACAAGCTCAGTGAAGCCCTGGGGAAAGCTGGGCAGGCCGAGGGGCTGCCTGGTGGGAGAGGCAG
CAGGGCAGGACCTCGGAGCCCGGAGACAGACCAGCGGCCCAAGCGCCGAGCCAGCTGTCCAGCAGC
TTTTCGTCAAGTGGCCATGTGGATCCCTCAGAGGACACCAGCTCCCTCATAGCCCTGAGTGGCCACT
GCTGATGCTCTGCCCTGCCCCACGACCCCGCCCTCCAGGAGTTGACTCCGGATGCATGCGCCAG
GGCGTCCCATCAGAGCAGCGCAGATGCTCCGTGACTACATGGCCAAGCTACCACCCAGAGGGACACC
CCAGGCTGTGCCACCACCTCCCCTCCAGGCTCCAGCGTCCGGGCCACTCGCTCCAGCAGCAC
ACACCCGTCTCTAGCTCTCAGCCCTCCGGAAGAAGCCTCGAATGGGCTTTGA
ACGCGTACGCGGCCGCTCGAGCAGAAACTATCTCAGAAGAGGATCTGGCAGCAAATGATATCTGGAT
TACAAGGATGACGACGATAAGGTTTAAACGGCCGGC
  
```

Restriction Sites: SgfI-MluI

Plasmid Map:


ACCN: NM_005679

Insert Size: 2610 bp

OTI Disclaimer: Our molecular clone sequence data has been matched to the reference identifier above as a point of reference. Note that the complete sequence of our molecular clones may differ from the sequence published for this corresponding reference, e.g., by representing an alternative RNA splicing form or single nucleotide polymorphism (SNP).

OTI Annotation: This TrueClone is provided through our Custom Cloning Process that includes sub-cloning into OriGene's pCMV6 vector and full sequencing to provide a non-variant match to the expected reference without frameshifts, and is delivered as lyophilized plasmid DNA.

Components: The ORF clone is ion-exchange column purified and shipped in a 2D barcoded Matrix tube containing 10ug of transfection-ready, dried plasmid DNA (reconstitute with 100 ul of water).

Reconstitution Method:

1. Centrifuge at 5,000xg for 5min.
2. Carefully open the tube and add 100ul of sterile water to dissolve the DNA.
3. Close the tube and incubate for 10 minutes at room temperature.
4. Briefly vortex the tube and then do a quick spin (less than 5000xg) to concentrate the liquid at the bottom.
5. Store the suspended plasmid at -20°C. The DNA is stable for at least one year from date of shipping when stored at -20°C.

RefSeq: [NM_005679.3](#)

RefSeq Size: 3962 bp

RefSeq ORF: 2610 bp

Locus ID: 9013

UniProt ID: [Q15572](#)

Cytogenetics: 16q24.1

Protein Families: Transcription Factors

MW: 95.3 kDa

Gene Summary: Initiation of transcription by RNA polymerase I requires the formation of a complex composed of the TATA-binding protein (TBP) and three TBP-associated factors (TAFs) specific for RNA polymerase I. This complex, known as SL1, binds to the core promoter of ribosomal RNA genes to position the polymerase properly and acts as a channel for regulatory signals. This gene encodes the largest SL1-specific TAF. Multiple alternatively spliced transcript variants encoding different isoforms have been identified. [provided by RefSeq, Jul 2011] Transcript Variant: This variant (1) encodes the longest isoform (1). Sequence Note: This RefSeq record was created from transcript and genomic sequence data to make the sequence consistent with the reference genome assembly. The genomic coordinates used for the transcript record were based on transcript alignments.