

## Product datasheet for **SC303636**

### PTPD2 (PTPN14) (NM\_005401) Human Untagged Clone

#### Product data:

Product Type:	Expression Plasmids
Product Name:	PTPD2 (PTPN14) (NM_005401) Human Untagged Clone
Tag:	Tag Free
Symbol:	PTPN14
Synonyms:	CATLPH; PEZ; PTP36; PTPD2
Mammalian Cell Selection:	Neomycin
Vector:	pCMV6-Entry (PS100001)
E. coli Selection:	Kanamycin (25 ug/mL)
Fully Sequenced ORF:	>SC303636 representing NM_005401. Blue=Insert sequence Red=Cloning site Green=Tag(s)

```
GCTCGTTT TAGTGAACCGTCAGAATTTTGT AATACGACTCACTATAGGGCGCCGGGAATTCGTCGACTG
GATCCGGTACCGAGGAGATCTGCCGCC GCGATCGCC
ATGCGTTTTGGTCTGAAGCTCCGCCGGACACGGCGCTACAACGTCCTGAGCAAGAAGCTGTTTGT CACA
CGGATTCGCTGCTGGACAGCAATGTTATCGAGTGCACGCTGTCGGTGGAAAGCACAGGGCAAGAATGC
CTGGAGGCTGTGGCCAGAGGCTGGAGCTGCGAGAGACGCACTACTTTGGCCTTTGGTTTCTCAGCAAG
AGCCAGCAAGCACGATGGGTGGAGCTGGAGAACTCTGAAGAAACATCTGGACAAATTCGCTAATGAG
CCTTTGCTTTTCTTTGGAGTCATGTTCTATGTGCCAAATGTGTCATGGCTTCAGCAAGAGGCCACAAGA
TATCAGTATTACCTGCAAGTCAAAAAGATGTGCTTGAAGGGCGATTACGATGTACATTGGACCAGGTG
ATTCGGCTAGCCGGCCTAGCTGTGCAAGCTGATTTTGGAGACTATAATCAGTTTGATTCTCAAGATTTTC
CTCAGAGAGTATGTGCTATTTCTATGGATTTGGCCCTGGAAGAGGCTGTCTGGAGGAGCTGACCCAG
AAGGTAGCCCAAGAACACAAAGCCACAGTGGAATCCTGCCAGCAGAAGCTGAACTGATGTACATCAAT
GAAGTTGAACGTTTGGATGGATTTGGACAGGAAATCTTCCTGTAAAGGACAATCATGAAAAGCTGTGTA
CACCTTGGCATTCTTTATGGGATTTTCGTGAGGAACAGAATTGGAAGACAAGCGGTAATATACAGG
TGAATGACATGGGGAATCACTCATAACAAGTCGACCATTCTAGTGGAGCTCATCAACAAAGAAGAG
ACTGCCCTCTTTCACACGGATGATATCGAAAATGCCAAGTATATTTCTCGGTTGTTTCCACACGACAC
AAGTTTTACAAACAAAACAAAATCTGCACTGAACAGTCAAATTTCCACCCCCATCAGAGCCAGGCC
ACCTGGAGCCGATCCTCTCTGCCAGGCAGCAGCCGTACATCCTGCCTCCGTTACGTCCAGTGTGGT
GAGCACTACTCGAAACGCACACCTCGAAGACAGCATTTTTCATGGGAATGAAGAAGCCTTGATTGC
AACTCTCACAAACAGCCTGGACTTAAATTTTAAATGGCACTGTCACCAATGGCAGCGTGTGTAGCGTT
CACAGCGTCAACTCCCTCAACTGCTCGAAAGTTTCATCCAGGCCTCCCTGTATCCTCCAACCTCAGT
ATCCCTGGGAGTGACATCATGCGGGCCGACTACATCCCGAGCCACCGGCACAGCGCGATCATCGTGCC
TCGTACAGGCCAACCCCGATTATGAGACAGTCATGCGCCAGATGAAGAGGGGGATCCTGCATACAGAC
AGCCAGAGCCAGTCTCTGAGAAACCTCAACATTATCAACACCCATGCCTACAACCAGCCAGAGGATCTG
GTGTACAGCCAACCGGAGATGCGGGAGAGGCACCCCTACTGTCCCTTATGGGCCACAGGGGTCTAC
```



[View online »](#)

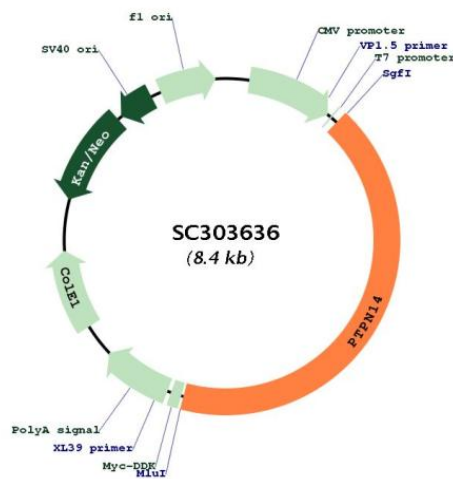
```

AGCAACAACTTGTCAAGTCCATCTGACCAGAGGAACCCAAAGAATAATGTGGTACCAAGCAAGCCGGG
GCAAGCGCATCTCGCACACGGTGAACACCCAGAGCTGGCCAACATGCAGCTGCAGGGCAGCCATAAC
TACAGCACGGCCACATGCTTAAGAACTATCTTTCAGGCCACCGCCCCCTACCCACGGCCACGACCT
GCCACCAGCACCCAGACCTGGCCAGCCACCGCCACAAGTACGTACAGGGCAGCAGCCCGGACCTGGTG
ACCCGGAAGGTGCAGCTCTCGGTGAAGACCTTCCAAGAGGACAGCTCTCCGGTGGTTCATCAGTCTCTC
CAGGAGGTGAGCGAGCCCTCACGGCCACCAAGCACCAGGCACCTGTGAACAAGCCGACAGCCTGGAG
GTGATGAACAGCATGGTGCAGGGCATGGAGGCCATGACGCTCAAGTCGCTCCACCTCCCCATGGTCCG
CGCAACACGCTCCGGGAGCAGGGACCGCCCGAGGAGGGTTCAGGCAGCCAGAGGTCGCCAGCTCCCT
CAGTATACCACAAGAAGACCTTCTCTGATGCCACTATGCTAATCCACAGCAGCGAGAGTGAAGGAGG
GAGGAGGAGGCTCCAGAATCGGTGCCCCAGATCCCCATGCTCCGGGAGAAGATGGAGTACAGTGCCAG
CTGCAGGCGGCCCTGGCCCGCATCCCCAACAGCCCCCGCTGAGTACCCCGGTCCAAGGAAGAGTGTG
AGCAATGGGGCTCTGAGGCAGGACCAAGCCAGCCTTCTCCCGCATGGCCAGAGCCAGGGTGTGAGG
CATGGGCCAGCAAGGCCATCAGCATGTCTGGACTGACCCGCGGCTGTCAACGGGGCCTCTCTCGGC
CCATCCATCTCGAACCAGCCTGACTAGTGTGAAGGAGCGGGTCAAAAAGAGCCTGTGAAGGAGAGA
CCTGTGTCTGAAATGTTTTCCCTGGAAGACAGCATTATAGAGAGAGAGATGATGATCAGGAATCTAGAG
AAGCAGAAGATGGCAGGCTGGAGGCACAGAAGAGGCCGCTGATGTTGGCAGCATTGAATGGGCTCTCG
GTGGCTCGAGTCTCAGGGCGGAAGAGAATCGAGTTGATGCCACCCGGTTCCTCATGGACGAGAGGTTT
AGAACCCTGAAGAAGAACTAGAAGAGGGAATGGTGTTCACAGAATATGAGCAAATTCAAAAGAAAAG
GCGAATGGCATTTCAGCACAGCAGCTCTGCCAGAAAACCGCAGCGCAGCCGAATCCGTGAAGTTGTC
CCATATGAGGAGAATCGAGTAGAGCTGATACCAACCAAGAAAATAACACAGGATACATTAATGCCTCC
CACATCAAGGTGGTGGTGGCGGGCAGAATGGCACTACATAGCCACCCAGGGGCCCTGCCACACAG
GAGGGTGGACGAACCAAAAGCCACCGATACTGGCCAAAAGTTCAGGTTCAAAGCACAGCTCAGCCACCTAT
GGCAAGTTCAAGGTCACACGAAGTTTCGAACGGATTCTGTTTGTCTATGCAACCACGGGCTTGAAGGTC
AAGCACCTTTTGTCTGGCAAGAAAGGACGGTGTGGCATTACAATATACTGACTGGCCAGATCACGGC
TGTCCAGAAGATGTCCAAGGATTTTATCTACTTGGAGGAGATCCAGTCCGTCCGTCCGCATACCAAC
AGCATGCTGGAAGGCACCAAGAACCAGCCACCCGCCATCGTGGTCCACTGTAGTGTGGGTGGGAAGG
ACCGGCGTGTCTATTCTTCTGAGCTGATGATCTACTGCTTGAACATAACGAAAAGGTGGAAAGTGGCC
ATGATGCTGAGGCTCCTCAGGGAGCAGAGGATGTTTCATGATCCAGACTATCGCTCAGTACAAGTTTGT
TACCAAGTCTCATCCAGTTCCTCCAAAAGTCCAGACTCATTAA
ACGCGTACGCGGCCGCTCGAGCAGAACTCATCTCAGAAGAGGATCTGGCAGCAAATGATATCCTGGAT
TACAAGGATGACGACGATAAGGTTTAAACGGCCGCGC
    
```

Restriction Sites:

Sgfl-MluI

Plasmid Map:



<b>ACCN:</b>	NM_005401
<b>Insert Size:</b>	3564 bp
<b>OTI Disclaimer:</b>	Our molecular clone sequence data has been matched to the reference identifier above as a point of reference. Note that the complete sequence of our molecular clones may differ from the sequence published for this corresponding reference, e.g., by representing an alternative RNA splicing form or single nucleotide polymorphism (SNP).
<b>OTI Annotation:</b>	This TrueClone is provided through our Custom Cloning Process that includes sub-cloning into OriGene's pCMV6 vector and full sequencing to provide a non-variant match to the expected reference without frameshifts, and is delivered as lyophilized plasmid DNA.
<b>Components:</b>	The ORF clone is ion-exchange column purified and shipped in a 2D barcoded Matrix tube containing 10ug of transfection-ready, dried plasmid DNA (reconstitute with 100 ul of water).
<b>Reconstitution Method:</b>	<ol style="list-style-type: none"><li>1. Centrifuge at 5,000xg for 5min.</li><li>2. Carefully open the tube and add 100ul of sterile water to dissolve the DNA.</li><li>3. Close the tube and incubate for 10 minutes at room temperature.</li><li>4. Briefly vortex the tube and then do a quick spin (less than 5000xg) to concentrate the liquid at the bottom.</li><li>5. Store the suspended plasmid at -20°C. The DNA is stable for at least one year from date of shipping when stored at -20°C.</li></ol>
<b>RefSeq:</b>	<a href="#">NM_005401.4</a>
<b>RefSeq Size:</b>	13443 bp
<b>RefSeq ORF:</b>	3564 bp
<b>Locus ID:</b>	5784
<b>UniProt ID:</b>	<a href="#">Q15678</a>
<b>Cytogenetics:</b>	1q32.3-q41
<b>Protein Families:</b>	Druggable Genome
<b>MW:</b>	135.3 kDa
<b>Gene Summary:</b>	The protein encoded by this gene is a member of the protein tyrosine phosphatase (PTP) family. PTPs are known to be signaling molecules that regulate a variety of cellular processes including cell growth, differentiation, mitotic cycle, and oncogenic transformation. This PTP contains an N-terminal noncatalytic domain similar to that of band 4.1 superfamily cytoskeleton-associated proteins, which suggested the membrane or cytoskeleton localization of this protein. It appears to regulate lymphatic development in mammals, and a loss of function mutation has been found in a kindred with a lymphedema-choanal atresia. [provided by RefSeq, Sep 2010]