

Product datasheet for **SC303183**

LTK (NM_002344) Human Untagged Clone

Product data:

Product Type:	Expression Plasmids
Product Name:	LTK (NM_002344) Human Untagged Clone
Tag:	Tag Free
Symbol:	LTK
Synonyms:	TYK1
Mammalian Cell Selection:	Neomycin
Vector:	pCMV6-Entry (PS100001)
E. coli Selection:	Kanamycin (25 ug/mL)



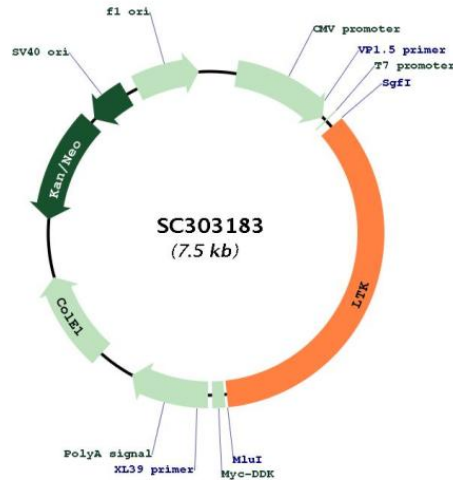
[View online »](#)

Fully Sequenced ORF: >SC303183 representing NM_002344.
 Blue=Insert sequence Red=Cloning site Green=Tag(s)

```

GCTCGTTAGTGAACCGTCAGAATTTTGTAAACGACTCACTATAGGGCGGCCGGGAATTCGTGACTG
GATCCGGTACCGAGGAGATCTGCCGCCCGGATCGCC
ATGGGCTGCTGGGACAGCTGCTGGTGTGGTTCGGAGCCGGGGCCATTCTCTGCTCTAGCCCGGGG
TCCAGGAGACTTTTCTGCGGTCTCGCCCTGCCGCTGGCAAGTCCCAGCCCCGGACCCGAAAGTC
AGCGCCCCGCCTAGTATCTTGGAGCCAGCCTCCCGCTGAATTCTCCGGGCACCGAGGGGTCTTGGCTG
TTTTCTACCTGCGGGGCCAGCGCCGGCATGGGCCACACAGACACAATGTGACGGGGCGTACGCGGGG
ACCAGCGTGGTGGTGACCGTGGGGGCCCGGGCAGCTGAGAGCGTGCAGCTGTGGCGCTGCCGGGC
CCTGGCCAGTATCTGATCTCAGCCTACGGAGCCGCGGGCGGCAAAGGCGCCAAGAACCACCTGTCGCGG
GCGCATGGCGTCTTCTGCTCAGCAATCTTCTCCCTCGGTCTCGGGGAGTCTGTACATCTGGTGGGG
CAGCAGGGAGAGGACGCCTGTCCCGAGGTAGCCCGAGAGCCAGCTCGTCTGCCTCGGGGAGTCTCGA
GCCGTTGAAGAGCACGCGCGGATGGATGGGAGCGAAGGGGTCCCGGGTTCGCGCCGCTGGCGGGAGGT
GGCGGGGTGGCGGGGGCCACCTACGTTTTCCGGGTGCGCGCTGGCGAGCTGGAACCGTTGCTGGTG
GCGGCCGAGGGCGCGGTCCGGCCCTACCTGAGGCCGCGGGACCGAGGCCGACTCAGGCCTCCCGGAG
AAACTGGAGAACCGCTCGGAGGCCCGGGAGCGCGGGAGAGGCCGGGGCGGCAGGTGGTGGGGCGGC
TGGACGTCGCGGGCTCCCTCTCCGACGGCCGGCCGCTCACTGCAGGAGGGGGCGGAGGGCGGCCAGGGC
TGCTCCGAGGCTTGGGCGACCCTTGGCTGGGCCGCGGCCGGCGCTTCCGGGGCGCGGCCGGGGCCTGC
ACTGCGGGCGGAGGGCGCGCGGCTACAGGGGGGGCGACGCTTACAGAGACTGACAACCTCTGGGCTGAT
GGGGAAGATGGAGTATCCTTCAACACCCAGCAGCGAGCTTCTCTGCAGCCTCTGGCAGTCAACCGAG
AACCACGGAGAGGTAGAGATCCGAAGGCACCTCAACTGCAGTCACTGCCCTTTGAGAGACTGCCAATGG
CAGCCAGAGCTCCAGCTGGTGAATGCCGTGCCAGAAAGGCATGGAGTACTGTGGATAACCTCACC
TGCATGGACCTGCACAAGCCCCAGGCCCTCTGGTTCTGATGGTGGCTGTGGTGGCAACCTCAACACTG
AGCCTCCTTATGGTGTGTGGGTCTGATTCTGGTGAAGCAGAAGAAGTGGCAGGGCCTGCAGGAGATG
AGGCTGCCGAGCCCTGAGCTTGAGCTGAGCAAGCTTCAACCTCTGCCATCAGGACAGCCCCAATCCC
TATTATTGCCAGGTGGGGCTTGGCCCGCCAGTCTGGCCTCTGCCACCAGGTGTACCGAGGTTTCC
CCAGCCAATGTTACTCTGCTCAGAGCCCTGGGCCATGGTGCCTTTGGGGAGGTGTATGAGGGACTGGTA
ATTGGCCTTCTGGGACTCCAGTCCCCTGCAGGTAGCTATCAAGACCCTGCCAGAACTCTGCTCGCCT
CAGGATGAGCTGGATTTCTCATGGAGGCCCTCATCATCAGCAAGTTTCCCATCAGAACATTGTGCGG
TGTGTGGGGCTCAGCCTCAGGGCCACCCTCGCCTCATTCTGCTGGAAGTATGCTGGAGGGGACATG
AAGAGTTTCTGAGGCACAGTCCGCCACACCTGGGCCAGCCATCACCTCTGGTCAATGCGGGACCTGCTG
CAACTGGCCCAGGACATAGCCCAGGGCTGCCACTACCTGGAGGAAAATCACTTATCCACAGGGATATT
GCCGCCGGAACTGCCTGCTGAGCTGCGCTGGACCCAGCCGAGTGGCCAAGATTGGGGACTTTGGGATG
GCACGAGATATCTACCGGCCAGTTATTACCGCAGGGGGGACCGGCCTTGTCCAGTCAAGTGGATG
CCCCCAGAGGCCCTTCTGGAGGGCATCTCACATCCAAGACAGATTCTGGTCTTTTGGGGTGTGCTC
TGGGAGATCTTCTCACTGGGCTACATGCCCTATCTGGGCGCACCAACCAGGAGGTGCTGGACTTCGTC
GTTGGAGGAGGCCGATGGACCCTCCTAGGGGCTGCCAGGGCCTGTGTACCGCATCATGACCCAGTGT
TGGCAGCACGAGCCTGAGCTCCGCCCTAGCTTTGCCAGCATCTTGGAGCGTCTGCAGTACTGCACTCAG
GACCCGGATGTGCTGAATTCACCTCTGCCAATGGAGCTGGGGCCACCCAGAGGAGGAAGGGACTTCT
GGGCTGGGGAACAGATCTTTGGAGTGCCTAAGACCCCCACAGCCCAGGAACTGAGTCCAGAGAAGTTG
AAAAGCTGGGGAGGTAGCCCTCTTGGCCCTGGCTGTCTCTGGCCTCAAGCCCCCTCAAATCCAGGGGC
CTCAACCTCAGAACCTTTGGAATCCCCTTATCGCTCCTGA
ACGCGTACGCGGCCGCTCGAGCAGAAACTCATCTCAGAAGAGGATCTGGCAGCAAATGATATCTGGAT
TACAAGGATGACGACGATAAGGTTTAAACGGCCGGC
  
```

Restriction Sites: SgfI-MluI

Plasmid Map:


ACCN: NM_002344

Insert Size: 2595 bp

OTI Disclaimer: Our molecular clone sequence data has been matched to the reference identifier above as a point of reference. Note that the complete sequence of our molecular clones may differ from the sequence published for this corresponding reference, e.g., by representing an alternative RNA splicing form or single nucleotide polymorphism (SNP).

OTI Annotation: This TrueClone is provided through our Custom Cloning Process that includes sub-cloning into OriGene's pCMV6 vector and full sequencing to provide a non-variant match to the expected reference without frameshifts, and is delivered as lyophilized plasmid DNA.

Components: The ORF clone is ion-exchange column purified and shipped in a 2D barcoded Matrix tube containing 10ug of transfection-ready, dried plasmid DNA (reconstitute with 100 ul of water).

Reconstitution Method:

1. Centrifuge at 5,000xg for 5min.
2. Carefully open the tube and add 100ul of sterile water to dissolve the DNA.
3. Close the tube and incubate for 10 minutes at room temperature.
4. Briefly vortex the tube and then do a quick spin (less than 5000xg) to concentrate the liquid at the bottom.
5. Store the suspended plasmid at -20°C. The DNA is stable for at least one year from date of shipping when stored at -20°C.

RefSeq: [NM_002344.5](#)

RefSeq Size: 3143 bp

RefSeq ORF: 2595 bp

Locus ID: 4058

UniProt ID: [P29376](#)

Cytogenetics: 15q15.1

Protein Families: Druggable Genome, Protein Kinase, Transmembrane

MW: 91.7 kDa

Gene Summary: The protein encoded by this gene is a member of the *ros*/insulin receptor family of tyrosine kinases. Tyrosine-specific phosphorylation of proteins is a key to the control of diverse pathways leading to cell growth and differentiation. Multiple transcript variants encoding different isoforms have been found for this gene. [provided by RefSeq, Oct 2008]
Transcript Variant: This variant (1) represents the longest transcript and encodes the longest isoform (1).