

Product datasheet for **SC302538**

LRRC17 (NM_001031692) Human Untagged Clone

Product data:

Product Type:	Expression Plasmids
Product Name:	LRRC17 (NM_001031692) Human Untagged Clone
Tag:	Tag Free
Symbol:	LRRC17
Synonyms:	P37NB
Mammalian Cell Selection:	Neomycin
Vector:	pCMV6-Entry (PS100001)
E. coli Selection:	Kanamycin (25 ug/mL)
Fully Sequenced ORF:	>SC302538 representing NM_001031692. Blue=Insert sequence Red=Cloning site Green=Tag(s)

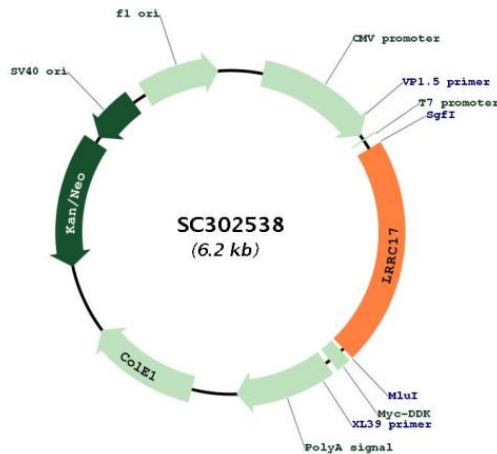
```
GCTCGTTTAGTGAACCGTCAGAATTTTGTAAACGACTCACTATAGGGCGCCGGGAATTCGTCGACTG
GATCCGGTACCGAGGAGATCTGCCGCCCGCATCGCC
ATGCGTGTGGTTACCATTTGTAATCTTGCTCTGCTTTTGCAAAGCGGCTGAGCTGCGCAAAGCAAGCCCA
GGCAGTGTGAGAAGCCGAGTGAATCATGGCCGGGGGGTGGAGGCCGAGAGGCTCCAACCCGGTCAAA
CGCTACGCACCAGGCCTCCCGTGTGACGTGTACACATATCTCCATGAGAAATACTTAGATTGTCAAGAA
AGAAAATTAGTTTATGTGCTGCCTGGTTGGCCTCAGGATTTGCTGCACATGCTGCTAGCAAGAAACAAG
ATCCGCACATTGAAGAACAACATGTTTTCCAAGTTTAAAAAGCTGAAAAGCCTGGATCTGCAGCAGAAT
GAGATCTCTAAAATTGAGAGTGAGGCGTCTTTGGTTTAAACAAACTCACCACCCTTACTGCAGCAC
AACCCAGATCAAAGTCTTGACGGAGGAAGTTCATTTACACACCTCTCTTGAGCTACCTGCGTCTTTAT
GACAACCCCTGGCACTGTACTTGTGAGATAGAAACGCTTATTTCAATGTTGCAGATTCCCAGGAACCCGG
AATTTGGGAACTACGCCAAGTGTGAAAGTCCACAAGAACAATAAAAACTGCGGCAGATAAAA
TCTGAACAGTTGTGTAATGAAGAAGAAAAGGAACAATTGGACCCGAAACCCCAAGTGTGACGGGAGACCC
CCAGTCATCAAGCCTGAGGTGGACTCAACTTTTGCCACAATTATGTGTTTCCATACAAACTGGAC
TGCAAAAGGAAAGAGTTGAAAAAGTGCCAAACAACATCCCTCCAGATATTGTTAACTTGACTTGTCA
TACAATAAAATCAACCACTTCGACCAAGGAATTTGAAGATGTTGATGAGCTGAAGAAATTAACCTC
AGCAGCAATGGCATTGAATTCATCGATCCTGCCGCTTTTTAGGGCTCACACATTTAGAAGAATTAGAT
TTATCAAACAACAGTCTGCAAAACTTTGACTATGGCGTATTAGAAGACTTGATTTTTTGAACCTTTG
TGGCTCAGAGATAACCCCTGGAGATGTGACTACAACATCACTACCTCTACTACTGGTTAAAGCACCAC
TACAATGTCCATTTTAAATGGCCTGGAATGCAAAACGCCTGAAGAATACAAAGGATGGTCTGTGGAAAA
TATATTAGAAGTTACTATGAAGAATGCCCAAAGACAAGTTACCAGCATATCCTGAGTCATTTGACCAA
GACACAGAAGATGATGAATGGGAAAAAAACATAGAGATCACACCCGAAAGCAAGCAAGCGTAATAATT
ACTATAGTAGGATTAA
ACGCGTACGCGGCCGCTCGAGCAGAAACTCATCTCAGAAGAGGATCTGGCAGCAATGATATCCTGGAT
TACAAGGATGACGACGATAAGGTTTAAACGGCCGCGC
```



View online »

Restriction Sites: SgfI-MluI

Plasmid Map:



ACCN: NM_001031692

Insert Size: 1326 bp

OTI Disclaimer: Our molecular clone sequence data has been matched to the reference identifier above as a point of reference. Note that the complete sequence of our molecular clones may differ from the sequence published for this corresponding reference, e.g., by representing an alternative RNA splicing form or single nucleotide polymorphism (SNP).

OTI Annotation: This TrueClone is provided through our Custom Cloning Process that includes sub-cloning into OriGene's pCMV6 vector and full sequencing to provide a non-variant match to the expected reference without frameshifts, and is delivered as lyophilized plasmid DNA.

Components: The ORF clone is ion-exchange column purified and shipped in a 2D barcoded Matrix tube containing 10ug of transfection-ready, dried plasmid DNA (reconstitute with 100 ul of water).

Reconstitution Method:

1. Centrifuge at 5,000xg for 5min.
2. Carefully open the tube and add 100ul of sterile water to dissolve the DNA.
3. Close the tube and incubate for 10 minutes at room temperature.
4. Briefly vortex the tube and then do a quick spin (less than 5000xg) to concentrate the liquid at the bottom.
5. Store the suspended plasmid at -20°C. The DNA is stable for at least one year from date of shipping when stored at -20°C.

RefSeq: [NM_001031692.2](#)

RefSeq Size: 2250 bp

RefSeq ORF: 1326 bp

Locus ID: 10234

UniProt ID: [Q8N6Y2](#)

Cytogenetics: 7q22.1

Protein Families: Druggable Genome

MW: 51.8 kDa

Gene Summary: Involved in bone homeostasis. Acts as a negative regulator of RANKL-induced osteoclast precursor differentiation from bone marrow precursors (By similarity).[UniProtKB/Swiss-Prot Function]
Transcript Variant: This variant (1) encodes the longer isoform (1). Sequence Note: This RefSeq record was created from transcript and genomic sequence data to make the sequence consistent with the reference genome assembly. The genomic coordinates used for the transcript record were based on transcript alignments.