

Product datasheet for **SC302474**

TTLL13 (NM_001029964) Human Untagged Clone

Product data:

Product Type:	Expression Plasmids
Product Name:	TTLL13 (NM_001029964) Human Untagged Clone
Tag:	Tag Free
Symbol:	TTLL13
Synonyms:	FLJ46079; MGC33417
Mammalian Cell Selection:	Neomycin
Vector:	pCMV6-Entry (PS100001)
E. coli Selection:	Kanamycin (25 ug/mL)



[View online »](#)

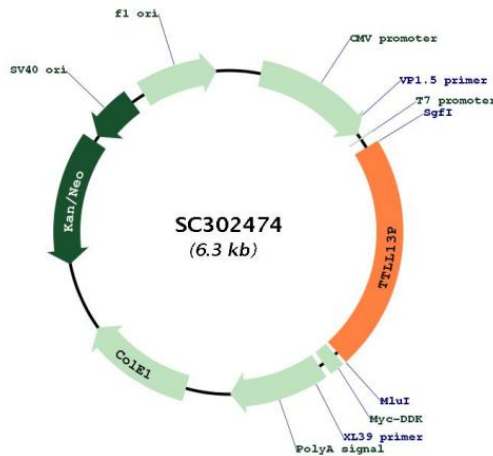
Fully Sequenced ORF: >SC302474 representing NM_001029964.
 Blue=Insert sequence Red=Cloning site Green=Tag(s)

```

GCTCGTTTAGTGAACCGTCAGAATTTTGTAAATACGACTCACTATAGGGCGGCCGGGAATTCGTGACTG
GATCCGGTACCGAGGAGATCTGCCGCCCGGATCGCC
ATGGAGCCGAGTACCTGTAGGACCATGGAATCAGAGGAAGACTATGTTGAGGAAAAGGAATCTGAGAAG
TGTGTTAAAGAGGGAGTTACCAACCCCTAACTTTCACAGCAGGCTCTCTTAAAAGCTGACTATAAG
GCATTAATAAATGGGGTTCCCTCACCCATTATGGCCACAAAAATCCGAAGAAAGTCATAGCCCCAGTT
GACACAGGCGACTTAGAAGCTGGGAGGAGAAAGAGAAGGCGGAAACGCAGATCACTGGCCATCAACCTG
ACCAACTGCAAGTATGAGAGTGTGCGTCGGGCAGCCAAATGTGTGCCCTGAAGGAGGTGGGGGAGGAT
GAAGAGTGGACTCTGACTGGACAGACTGCGCTGTCTCACTGGAACGAGTCATGGACATGAAGAGGTTT
CAGAAAATCAACCACTCCCTGGCATGACAGAAATCTGCCGAAAGATCTGCTGGCTCGGAACCTCAAC
CGCATGTACAACTCTATCCCTCTGAGTACAACATCTTCCCCGCACCTGGTGCCTCCCCGAGACTAT
GGGACTTCCAGTCTACGGTCGTGAGGAAAAGCCCGCACATATATCTGCAAGCCAGACAGTGGCTGT
CAGGGACGTGGCATCTTCATTACCGAAATCCCGGGGAGATCAAGCCAGGAGAGCATATGATCTGCCAG
CAATACATCTCCAAGCCCTCCTATTGATGGCTTCAAGTTTGATATGCGAGTCTACGTCCTGATCACA
TCTGTGACCCTCTCCGGATCTTACATATGAGGAGGGCCTAGCCCGTTTGGCCACCACGCCCTATATG
GAGCCAGCCATAACAACCTGGACAATGTCTGCATGCACCTGACCAACTATGCTATCAACAAACACAAT
GAGAATTTGTCCGGATGGCGCTGTGGGCAGTAAGAGGAAGCTGTGACACTCAACATCTGGCTGCAA
GAGCACAGCTACAACCTGGAGAGCTGTGGGGGACATCGAGGACATCATCATCAAACCATCATCTCA
GCCATTCTGTTCTACGCCACAACCTACCGAACCTGTTTTCCCCAGTATCTGAATGGAGGTACATGTCC
TGTTTTGAAATCCTTGGTTTTGACATCTTGCTGGACCACAAGTTGAAGCCCTGGCTGCTAGAGGTAAC
CACTCTCAAGCTTTACCACGGACTCATGCCTTGATCAAGAAGTAAAGGATGCACCTCTCTGTGATGCT
ATGACCCTTGTAACCTCCGGGGCTGTGACAAAAGGAAGGTGATGGAGGAGGATAAGCGGGAGTCAAG
GAACGGCTTTTCCAGTGCTACCGACAGCCACGAGAATCTAGGTGTCTAGGTGTCTGGCATGTGTTAG
ACGCGTACGCGGCCGCTCGAGCAGAACTCATCTCAGAAGAGGATCTGGCAGCAATGATATCCTGGAT
TACAAGGATGACGACGATAAGGTTTAAACGGCCGGC
  
```

Restriction Sites: SgfI-MluI

Plasmid Map:



ACCN: NM_001029964

Insert Size: 1380 bp

OTI Disclaimer:	Our molecular clone sequence data has been matched to the reference identifier above as a point of reference. Note that the complete sequence of our molecular clones may differ from the sequence published for this corresponding reference, e.g., by representing an alternative RNA splicing form or single nucleotide polymorphism (SNP).
OTI Annotation:	This TrueClone is provided through our Custom Cloning Process that includes sub-cloning into OriGene's pCMV6 vector and full sequencing to provide a non-variant match to the expected reference without frameshifts, and is delivered as lyophilized plasmid DNA.
Components:	The ORF clone is ion-exchange column purified and shipped in a 2D barcoded Matrix tube containing 10ug of transfection-ready, dried plasmid DNA (reconstitute with 100 ul of water).
Reconstitution Method:	<ol style="list-style-type: none"> 1. Centrifuge at 5,000xg for 5min. 2. Carefully open the tube and add 100ul of sterile water to dissolve the DNA. 3. Close the tube and incubate for 10 minutes at room temperature. 4. Briefly vortex the tube and then do a quick spin (less than 5000xg) to concentrate the liquid at the bottom. 5. Store the suspended plasmid at -20°C. The DNA is stable for at least one year from date of shipping when stored at -20°C.
RefSeq:	<u>NM_001029964.2</u>
RefSeq Size:	1793 bp
RefSeq ORF:	1380 bp
Locus ID:	440307
Cytogenetics:	15q26.1
MW:	53.2 kDa