

Product datasheet for **SC302379**

IRAK (IRAK1) (NM_001025242) Human Untagged Clone

Product data:

Product Type:	Expression Plasmids
Product Name:	IRAK (IRAK1) (NM_001025242) Human Untagged Clone
Tag:	Tag Free
Symbol:	IRAK1
Synonyms:	IRAK; pelle
Mammalian Cell Selection:	Neomycin
Vector:	pCMV6-Entry (PS100001)
E. coli Selection:	Kanamycin (25 ug/mL)

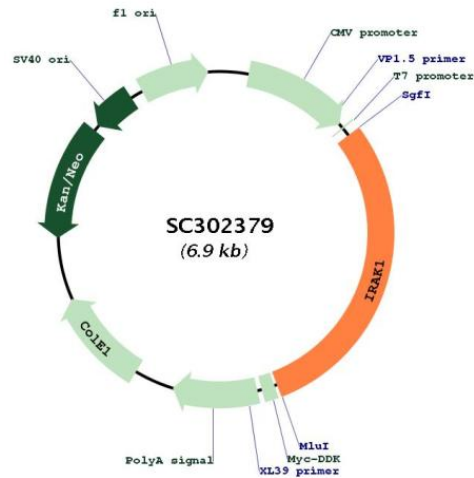


[View online »](#)

Fully Sequenced ORF: >SC302379 representing NM_001025242.
Blue=Insert sequence Red=Cloning site Green=Tag(s)

```
GCTCGTTTAGTGAACCGTCAGAATTTTGTAAACGACTCACTATAGGGCGGCCGGGAATTCGTGACTG
GATCCGGTACCGAGGAGATCTGCCGCCGCGATCGCC
ATGGCCGGGGGGCCGGGCCGGGGGAGCCCGCAGCCCCGGGCCCCAGCACTTCTTGTACGAGGTGCCG
CCCTGGGTCAATGCGCGTTCTACAAGTGATGGACGCCCTGGAGCCCGCCGACTGGTGCCAGTTCCGCC
GCCCTGATCGTGCAGCAGACCCGAGCTGCGGCTGTGCGAGCGCTCCGGGCAGCGCACGCCAGCGTC
CTGTGGCCCTGGATCAACCGCAACGCCCGTGTGGCCGACCTCGTGACATCCTCACGCACCTGCAGCTG
CTCCGTGCGCGGGACATCATCACAGCCTGGCACCTCCCGCCCCGCTTCCGTCCCGAGCCAGCACTGCC
CCGAGGCCAGCAGCATCCCTGCACCCGCCGAGGCCGAGGCTGGAGCCCCGGAAGTTGCCATCTCA
GCCTCCACCTTCTCTCCAGCTTTTCCAGGCTCCAGACCCATTAGGGCTGAGCTCGGCTGGTC
CCAAGCCCTGCTCCCTGTGGCTCCACCGCCATCTCCAGCCCTTCTTACCAAGCCAGGCCAGAG
AGCTCAGTGTCCCTCCTGCAGGGAGCCCGCCCTTCCGTTTTGTGGCCCTCTGTGAGATTTCCCGG
GGCACCCACAACCTCTCGGAGGAGCTCAAGATCGGGGAGGGTGGCTTTGGGTGCGTGTACCGGGCGGTG
ATGAGGAACACCGTGTATGCTGTGAAGAGGCTGAAGGAGAACGCTGACCTGGAGTGGACTGAGTGAAG
CAGAGTTCCTGACCGAGGTGGAGCAGCTGCCAGTTTCGTACCCAAACATTGTGGACTTTGCTGGC
TACTGTGCTCAGAACGGCTTCTACTGCCTGGTGTACGGCTTCTGCCAACGGCTCCCTGGAGGACCGT
CTCCACTGCCAGACCCAGGCTGCCACCTCTCTCTGGCCTCAGCGACTGGACATCCTTCTGGGTACA
GCCCGGGCAATTCAGTTTCTACATCAGGACAGCCCCAGCCTCATCCATGGAGACATCAAGAGTTCCAAC
GTCCTTCTGGATGAGAGGCTGACACCAAGCTGGGAGACTTTGGCCTGGCCCGTTTCCAGCCGTTTGGC
GGGTCCAGCCCCAGCCAGAGCAGCATGGTGGCCGGACACAGACAGTGGGGGCACCCTGGCCTACCTG
CCCGAGGAGTACATCAAGACGGGAAGGCTGGCTGTGGACACGGACACCTTCCAGTTTGGGTGGTAGTG
CTAGAGACCTTGGCTGGTCAAGAGGCTGTGAAGACGCACGGTGGCAGGACCAAGTATCTGAAAGACCTG
GTGGAAGAGGAGGCTGAGGAGGCTGGAGTGGCTTTGAGAAGCACCCAGAGCACACTGCAAGCAGGTCTG
GCTGCAGATGCCTGGGCTGCTCCCATCGCCATGCAGATCTACAAGAAGCACCTGGACCCAGGCCGGG
CCCTGCCACCTGAGCTGGGCTGGGCTGGGCCAGCTGGCCTGCTGCTGCCTGCACCGCCGGGCCAAA
AGGAGGCTCCTATGACCCAGGAGAATCCTACGTGTCCAGCACTGGCAGAGCCACAGTGGGGCTGCT
CCATGGCAGCCCCCTGGCAGGCCATCAGGAGCCAGTGGCCAGGCAGCAGAGCAGTGCAGAGAGGCCCC
AACCAGCCCGTGGAGAGTGACGAGAGCCTAGGCGGCTCTCTGCTGCCCTGCGCTCCTGGCACTTGACT
CCAAGCTGCCCTCTGGACCCAGCACCCCTCAGGGAGGCCGGCTGTCTCAGGGGGACACGGCAGGAGAA
TCGAGCTGGGGGAGTGGCCAGGATCCCGGCCACAGCCGTGGAAGGACTGGCCCTTGGCAGCTCTGCA
TCATCGTCGTGAGAGCCACCGCAGATTATCATCAACCCTGCCCGACAGAAGATGGTCCAGAAGCTGGCC
CTGTACGAGGATGGGGCCCTGGACAGCCTGCAGCTGCTGTGTCAGCTCCCTCCAGGCTTGGGCTG
GAACAGGACAGGCAGGGGCCCAAGAAAGTGATGAATTTAGAGCTGA
ACGCGTACGCGGCCGCTCGAGCAGAACTCATCTCAGAAGAGGATCTGGCAGCAATGATATCCTGGAT
TACAAGGATGACGACGATAAGGTTTAAACGGCCGGC
```

Restriction Sites: SgfI-MluI

Plasmid Map:


ACCN: NM_001025242

Insert Size: 2049 bp

OTI Disclaimer: Due to the inherent nature of this plasmid, standard methods to replicate additional amounts of DNA in *E. coli* are highly likely to result in mutations and/or rearrangements. Therefore, OriGene does not guarantee the capability to replicate this plasmid DNA. Additional amounts of DNA can be purchased from OriGene with batch-specific, full-sequence verification at a reduced cost. Please contact our customer care team at custsupport@origene.com or by calling 301.340.3188 option 3 for pricing and delivery.

The molecular sequence of this clone aligns with the gene accession number as a point of reference only. However, individual transcript sequences of the same gene can differ through naturally occurring variations (e.g. polymorphisms), each with its own valid existence. This clone is substantially in agreement with the reference, but a complete review of all prevailing variants is recommended prior to use. [More info](#)

OTI Annotation: This TrueClone is provided through our Custom Cloning Process that includes sub-cloning into OriGene's pCMV6 vector and full sequencing to provide a non-variant match to the expected reference without frameshifts, and is delivered as lyophilized plasmid DNA.

Components: The ORF clone is ion-exchange column purified and shipped in a 2D barcoded Matrix tube containing 10ug of transfection-ready, dried plasmid DNA (reconstitute with 100 ul of water).

Reconstitution Method:	<ol style="list-style-type: none">1. Centrifuge at 5,000xg for 5min.2. Carefully open the tube and add 100ul of sterile water to dissolve the DNA.3. Close the tube and incubate for 10 minutes at room temperature.4. Briefly vortex the tube and then do a quick spin (less than 5000xg) to concentrate the liquid at the bottom.5. Store the suspended plasmid at -20°C. The DNA is stable for at least one year from date of shipping when stored at -20°C.
RefSeq:	NM_001025242.1
RefSeq Size:	3499 bp
RefSeq ORF:	2049 bp
Locus ID:	3654
UniProt ID:	P51617
Cytogenetics:	Xq28
Protein Families:	Druggable Genome, Protein Kinase, Transcription Factors
Protein Pathways:	Apoptosis, Neurotrophin signaling pathway, Toll-like receptor signaling pathway
MW:	73.4 kDa
Gene Summary:	<p>This gene encodes the interleukin-1 receptor-associated kinase 1, one of two putative serine/threonine kinases that become associated with the interleukin-1 receptor (IL1R) upon stimulation. This gene is partially responsible for IL1-induced upregulation of the transcription factor NF-kappa B. Alternatively spliced transcript variants encoding different isoforms have been found for this gene. [provided by RefSeq, Jul 2008]</p> <p>Transcript Variant: This variant (2) lacks an in-frame segment in the CDS, as compared to variant 1. The encoded isoform 2 thus lacks an internal segment, as compared to isoform 1.</p>