

## Product datasheet for **SC302369**

### AP2M1 (NM\_001025205) Human Untagged Clone

#### Product data:

Product Type:	Expression Plasmids
Product Name:	AP2M1 (NM_001025205) Human Untagged Clone
Tag:	Tag Free
Symbol:	AP2M1
Synonyms:	AP50; CLAPM1; MRD60; mu2
Mammalian Cell Selection:	Neomycin
Vector:	pCMV6-Entry (PS100001)
E. coli Selection:	Kanamycin (25 ug/mL)
Fully Sequenced ORF:	>SC302369 representing NM_001025205. Blue=Insert sequence Red=Cloning site Green=Tag(s)

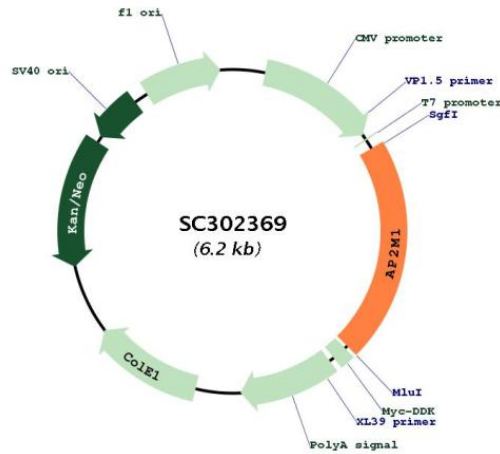
```
GCTCGTTTGTAGTAACCGTCAGAATTTTGTAAACGACTACTATAGGGCGCCGGGAATTCGTCGACTG
GATCCGGTACCGAGGAGATCTGCCGCCGCGATCGCC
ATGATTGGAGGCTTATTCATCTATAATCACAAGGGGGAGGTGCTCATCTCCCGAGTCTACCGAGATGAC
ATCGGGAGGAACGCAGTGGATGCCTTTCCGGTCAATGTTATCCATGCCCGGCAGCAGGTGCGCAGCCCC
GTCACCAACATTGCTCGCACCAGCTTCTCCACGTTAAGCGGTCCAACATTTGGCTGGCAGCAGTCACC
AAGCAGAATGTCAACGCTGCCATGGTCTTCAATTCCTCTATAAGATGTGTGACGTGATGGCTGCCTAC
TTTGGCAAGATCAGCGAGGAAAACATCAAGAACAATTTGTGCTCATATATGAGCTGCTGGATGAGATT
CTAGACTTTGGCTACCCACAGAATTCGAGACAGGCGCGCTGAAAACCTTCATCACGCAGCAGGGCATC
AAGAGTCAGACAAAAGAAGAGCAGTCACAGATCACCAGCCAGGTAAGTGGGCAGATTGGCTGGCGCGGA
GAGGGTATCAAGTATCGTCGGAATGAGCTTCTCCTGGATGTGCTGGAGAGTGTGAACCTGCTCATGTCC
CCACAAGGGCAGGTGCTGAGTGCCCATGTGTCGGGCCGGGTGGTATGAAGAGCTACCTGAGTGGCATG
CCTGAATGCAAGTTTGGGATGAATGACAAGATTGTTATTGAAAAGCAGGGCAAAGGCACAGCTGATGAA
ACAAGCAAGAGCGGGAAGCAATCAATTGCCATTGATGACTGCACCTTCCACCAAGTGTGTGCGACTCAGC
AAGTTTGACTCTGAACGCAGCATCAGCTTTATCCCGCCAGATGGAGAGTTTGAGCTTATGAGGTATCGC
ACAACCAAGGACATCATCCTTCCCTTCCGGGTGATCCCCTAGTGCAGAAAGTGGGACGCACCAAACTG
GAGGTCAAGGTGGTCAATCAAGTCCAATTTAAACCCTCACTGCTGGCTCAGAAGATCGAGGTGAGGATC
CCAACCCCACTGAACACAAGCGGGTGCAGGTGATCTGCATGAAGGGGAAGGCCAAGTACAAGGCCAGC
GAGAATGCCATCGTGTGGAAGATCAAGCGCATGGCAGGCATGAAGGAATCGCAGATCAGCGCAGAGATT
GAGCTTCTGCCTACCAACGACAAGAAGAAATGGGCTCGACCCCCCATTTCCATGAACTTTGAGGTGCCA
TTCGCGCCCTCTGGCCTCAAGGTGCGCTACTTGAAGGTGTTTGAACCGAAGCTGAACTACAGCGACCAT
GATGTCATCAAATGGGTGCGCTACATTGGCCGAGTGGCATTATGAAACTCGCTGCTAG
ACGCGTACGCGGCCGCTCGAGCAGAAACTCATCTCAGAAGAGGATCTGGCAGCAAATGATATCCTGGAT
TACAAGGATGACGACGATAAGGTTTAAACGGCCGGC
```



[View online »](#)

Restriction Sites: SgfI-MluI

Plasmid Map:



ACCN: NM\_001025205

Insert Size: 1302 bp

**OTI Disclaimer:** Our molecular clone sequence data has been matched to the reference identifier above as a point of reference. Note that the complete sequence of our molecular clones may differ from the sequence published for this corresponding reference, e.g., by representing an alternative RNA splicing form or single nucleotide polymorphism (SNP).

**OTI Annotation:** This TrueClone is provided through our Custom Cloning Process that includes sub-cloning into OriGene's pCMV6 vector and full sequencing to provide a non-variant match to the expected reference without frameshifts, and is delivered as lyophilized plasmid DNA.

**Components:** The ORF clone is ion-exchange column purified and shipped in a 2D barcoded Matrix tube containing 10ug of transfection-ready, dried plasmid DNA (reconstitute with 100 ul of water).

**Reconstitution Method:**

1. Centrifuge at 5,000xg for 5min.
2. Carefully open the tube and add 100ul of sterile water to dissolve the DNA.
3. Close the tube and incubate for 10 minutes at room temperature.
4. Briefly vortex the tube and then do a quick spin (less than 5000xg) to concentrate the liquid at the bottom.
5. Store the suspended plasmid at -20°C. The DNA is stable for at least one year from date of shipping when stored at -20°C.

RefSeq: [NM\\_001025205.1](#)

RefSeq Size: 1952 bp

RefSeq ORF: 1302 bp

Locus ID: 1173

UniProt ID: [Q96CW1](#)

Cytogenetics: 3q27.1

Protein Families: Druggable Genome

Protein Pathways: Endocytosis, Huntington's disease

MW: 49.4 kDa

**Gene Summary:** This gene encodes a subunit of the heterotetrameric coat assembly protein complex 2 (AP2), which belongs to the adaptor complexes medium subunits family. The encoded protein is required for the activity of a vacuolar ATPase, which is responsible for proton pumping occurring in the acidification of endosomes and lysosomes. The encoded protein may also play an important role in regulating the intracellular trafficking and function of CTLA-4 protein. Three transcript variants encoding different isoforms have been found for this gene. [provided by RefSeq, Jul 2015]  
Transcript Variant: This variant (2) lacks three alternate in-frame exons compared to variant 3. The resulting isoform (b) has the same N- and C-termini but is shorter compared to isoform c.