

Product datasheet for SC302311

RPL9 (NM_001024921) Human Untagged Clone

Product data:

Product Type:	Expression Plasmids
Product Name:	RPL9 (NM_001024921) Human Untagged Clone
Tag:	Tag Free
Symbol:	RPL9
Synonyms:	L9; NPC-A-16
Mammalian Cell Selection:	Neomycin
Vector:	pCMV6-Entry (PS100001)
E. coli Selection:	Kanamycin (25 ug/mL)
Fully Sequenced ORF:	>SC302311 representing NM_001024921. Blue=Insert sequence Red=Cloning site Green=Tag(s)

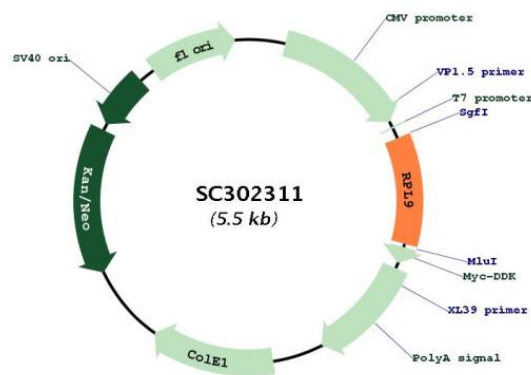
```
GCTCGTTTAGTGAACCGTCAGAATTTGTAAATACGACTCACTATAGGGCGCCGGGAATTCGTCGACTG
GATCCGGTACCGAGGAGATCTGCCGCCGCGATCGCC
ATGAAGACTATTCTCAGCAATCAGACTGTCGACATTCCAGAAAATGTCGACATTACTCTGAAGGGACGC
ACAGTTATCGTGAAGGGCCCCAGAGGAACCTGCCGAGGGACTTCAATCACATCAATGTAGAACTCAGC
CTTCTTGGAAAGAAAAAAGAGGCTCCGGTTGACAAATGGTGGGGTAACAGAAAGGAAGTGGCTACC
GTTCCGACTATTTGTAGTCATGTACAGAACATGATCAAGGGTGTACTACTGGGCTCCGTTACAAGATG
AGGTCTGTGTATGCTCACTTCCCATCAACGTTGTTATCCAGGAGAATGGGTCTCTTGTGAAATCCGA
AATTTCTTGGGTAAAAATATATCCGCAGGGTTCGGATGAGACCAGGTGTGCTTGTTCAGTATCTCAA
GCCCAGAAAGATGAATTAATCCTTGAAGGAAATGACATTGAGCTTGTTCAAATTCAGCGGCTTTGATT
CAGCAAGCCACAACAGTTAAAAACAAGGATATCAGGAAATTTTTGGATGGTATCTATGTCTCTGAAAAA
GGAAGTTCAGCAGGCTGATGAATAA
ACGCGTACGCGGCCGCTCGAGCAGAACTCATCTCAGAAGAGGATCTGGCAGCAAATGATATCCTGGAT
TACAAGGATGACGACGATAAGGTTTAAACGGCCGGC
```

Restriction Sites: Sgfl-MluI



[View online »](#)

Plasmid Map:



ACCN: NM_001024921

Insert Size: 579 bp

OTI Disclaimer: Our molecular clone sequence data has been matched to the reference identifier above as a point of reference. Note that the complete sequence of our molecular clones may differ from the sequence published for this corresponding reference, e.g., by representing an alternative RNA splicing form or single nucleotide polymorphism (SNP).

OTI Annotation: This TrueClone is provided through our Custom Cloning Process that includes sub-cloning into OriGene's pCMV6 vector and full sequencing to provide a non-variant match to the expected reference without frameshifts, and is delivered as lyophilized plasmid DNA.

Components: The ORF clone is ion-exchange column purified and shipped in a 2D barcoded Matrix tube containing 10ug of transfection-ready, dried plasmid DNA (reconstitute with 100 ul of water).

Reconstitution Method:

1. Centrifuge at 5,000xg for 5min.
2. Carefully open the tube and add 100ul of sterile water to dissolve the DNA.
3. Close the tube and incubate for 10 minutes at room temperature.
4. Briefly vortex the tube and then do a quick spin (less than 5000xg) to concentrate the liquid at the bottom.
5. Store the suspended plasmid at -20°C. The DNA is stable for at least one year from date of shipping when stored at -20°C.

RefSeq: [NM_001024921.3](#)

RefSeq Size: 924 bp

RefSeq ORF: 579 bp

Locus ID: 6133

UniProt ID: [P32969](#)

Cytogenetics: 4p14

Protein Pathways: Ribosome

MW: 21.9 kDa

Gene Summary: Ribosomes, the organelles that catalyze protein synthesis, consist of a small 40S subunit and a large 60S subunit. Together these subunits are composed of 4 RNA species and approximately 80 structurally distinct proteins. This gene encodes a ribosomal protein that is a component of the 60S subunit. The protein belongs to the L6P family of ribosomal proteins. It is located in the cytoplasm. As is typical for genes encoding ribosomal proteins, there are multiple processed pseudogenes of this gene dispersed through the genome. Alternative splicing results in multiple transcript variants. [provided by RefSeq, Feb 2016]
Transcript Variant: This variant (2) uses an alternative splice site in its 5' UTR, compared to variant 1. Variants 1 and 2 encode the same protein.