

Product datasheet for **SC302281**

SH3KBP1 (NM_001024666) Human Untagged Clone

Product data:

Product Type:	Expression Plasmids
Product Name:	SH3KBP1 (NM_001024666) Human Untagged Clone
Tag:	Tag Free
Symbol:	SH3KBP1
Synonyms:	AGMX2; CD2BP3; CIN85; GIG10; HSB-1; HSB1; IMD61; MIG18
Mammalian Cell Selection:	Neomycin
Vector:	pCMV6-Entry (PS100001)
E. coli Selection:	Kanamycin (25 ug/mL)

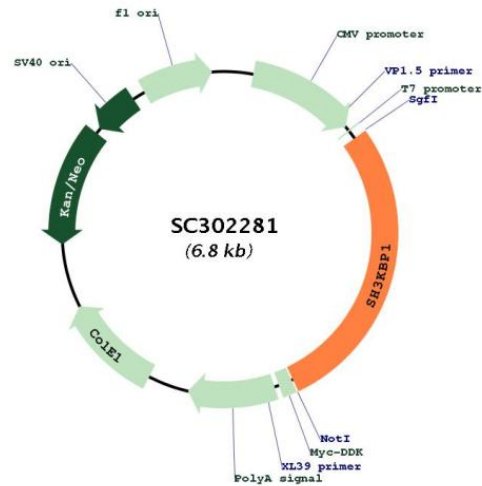


[View online »](#)

Fully Sequenced ORF: >SC302281 representing NM_001024666.
Blue=Insert sequence Red=Cloning site Green=Tag(s)

```
GCTCGTTTAGTGAACCGTCAGAATTTTGTAAACGACTCACTATAGGGCGGCCGGGAATTCGTGCACTG
GATCCGGTACCGAGGAGATCTGCCGCCGCGATCGCC
ATGGAGGTTTCAGCAGCCAAAGCCCAAGTGCCGCAGACTTGCTGAGATTGAAATAAAGAAAGAGATG
AAGAAAGACCCCTCTACCAACAAAGCTCCAGAAAAGCCCTGCACGAAGTGCCAGTGAAACTCTTTG
CTGTCTTCTGAAACGATTTTAAGAACCAATAAGAGAGGCCGACGACGGAGCGCCGGTGCCAGGTGGCA
TTCAGCTACCTGCCCCAGAATGACGATGAACCTTGAGCTGAAAGTTGGCGACATCATAGAGGTGGTAGGA
GAGGTAGAGGAAGGATGGTGGGAAGGTGTTCTCAACGGGAAGACTGGAATGTTTCCCTTCCAACCTCATC
AAGGAGCTGTGAGGGGAGTCGGATGAGCTTGGCATTTCAGGATGAGCAGCTATCCAAGTCAAGTTTA
AGGAAACACAGGCTCCGAGAGTGATGGGGTGACTCAAGCAGCACCAAGTCTGAAGGTCCAACGGG
ACAGTGCCAACCTGCAGCAATCCAGCCCAAGAAAGTTAAGGGAGTGGGCTTTGGAGACATTTTCAAAGAC
AAGCCAATCAAATAAGACCAAGGTCAATTGAAGTAGAAAATGACTTTCTGCCGGTAGAAAAGACTATT
GGGAAGAAGTTACCTGCAACTACAGCAACTCCAGACTCATCAAAAACAGAAATGGACAGCAGGACAAAG
AGCAAGGATTACTGCAAAGTAATATTTCCATATGAGGCACAGAATGATGATGAATTGACAATCAAAGAA
GGAGATATAGTCACTCTCATCAATAAGGACTGCATCGACGTAGGCTGGTGGGAAGGAGAGCTGAACGGC
AGACGAGGCGTGTTCGCCGATACTTCGTGAAGTTACTTCCACCGGACTTTGAAAAGGAAGGGAATAGA
CCCAAGAAGCCACCGCTCCATCCGCTCCTGTCATCAAACAAGGGGCAGGACCCTGAGAGAAAACAT
GAAATTAAGAAAGTACCTCCTGAAAGACCAGAAATGCTTCCAACAGAACAGAGAAAAGAAAGACCA
GAGAGAGAGCCAAAACCTGGATTTACAGAAGCCCTCCGTTCCCTGCCATACCGCCAAAAAGCCTCGGCCA
CCTAAGACCAATTCTCTCAGCAGACCTGGCGCACTGCCCCGAGAAGGCCGGAGAGACCGGTGGGTCCG
CTGACACACACCAGGGGTGACAGTCCAAAGATTGACTTGGCCGGCAGTTCGCTATCTGGCATCTGGAC
AAAGATCTCTCGGACCGCAGCAATGACATTGACTTAGAAGGTTTTGACTCCGTGGTATCATCTACTGAG
AAACTCAGTCATCCGACCACAAGCAGACAAAAGCTACAGGGAGGCGGCCTCCGTCCCAGTCCCTCACA
TCTTCATCCCTTTCAAGCCCTGATATCTTCGACTCCCCAAGTCCCGAAGAGGATAAGGAGGAACACATT
TCACTTGGCGCACAGAGGAGTGGACGCGTCAAAGAAAACCTCCAAGACTGTTACCATATCCAAGTGTCT
GACAACAAAGCATCCCTGCCGCCAAGCCGGGACCATGGCAGCAGGTGGCGGTGGGCCAGCCCCTCTG
TCCTCAGCGGCCCTCCCCCTGTCATCCTCTTTGGGAACAGCTGGACACAGAGCCAACCTCCCGTCT
CTGTTCCGGCACGGAAGGAAAACCAAGATGGAGCCTGCGGCCAGCAGCCAGGCGGCCGTGGAGGAGCTA
AGGACACAGGTCCGCGAGCTGAGGAGCATCATCGAGACCATGAAGGACCAGCAGAAACGAGAGATAAA
CAGTTATTGTCTGAGTTGGATGAAGAGAAGAAAATCCGGTTCGGTTGCAGATGGAAGTGAACGACATA
AAGAAAGCTCTACAATCAAAATGA
ACGCGGCCGCTCGAGCAGAACTCATCTCAGAAGAGGATCTGGCAGCAAATGATATCCTGGATTACAAG
GATGACGACGATAAGGTTTAAACGGCCGGCCGGGT
```

Restriction Sites: SgfI-NotI

Plasmid Map:


ACCN: NM_001024666

Insert Size: 1887 bp

OTI Disclaimer: Our molecular clone sequence data has been matched to the reference identifier above as a point of reference. Note that the complete sequence of our molecular clones may differ from the sequence published for this corresponding reference, e.g., by representing an alternative RNA splicing form or single nucleotide polymorphism (SNP).

OTI Annotation: This TrueClone is provided through our Custom Cloning Process that includes sub-cloning into OriGene's pCMV6 vector and full sequencing to provide a non-variant match to the expected reference without frameshifts, and is delivered as lyophilized plasmid DNA.

Components: The ORF clone is ion-exchange column purified and shipped in a 2D barcoded Matrix tube containing 10ug of transfection-ready, dried plasmid DNA (reconstitute with 100 ul of water).

Reconstitution Method:

1. Centrifuge at 5,000xg for 5min.
2. Carefully open the tube and add 100ul of sterile water to dissolve the DNA.
3. Close the tube and incubate for 10 minutes at room temperature.
4. Briefly vortex the tube and then do a quick spin (less than 5000xg) to concentrate the liquid at the bottom.
5. Store the suspended plasmid at -20°C. The DNA is stable for at least one year from date of shipping when stored at -20°C.

RefSeq: [NM_001024666.2](#)

RefSeq Size: 4454 bp

RefSeq ORF: 1887 bp

Locus ID: 30011

UniProt ID: [Q96B97](#)

Cytogenetics: Xp22.12

Protein Families: Druggable Genome

Protein Pathways: Endocytosis

MW: 68.6 kDa

Gene Summary: This gene encodes an adapter protein that contains one or more N-terminal Src homology domains, a proline rich region and a C-terminal coiled-coil domain. The encoded protein facilitates protein-protein interactions and has been implicated in numerous cellular processes including apoptosis, cytoskeletal rearrangement, cell adhesion and in the regulation of clathrin-dependent endocytosis. Alternate splicing results in multiple transcript variants encoding distinct isoforms. [provided by RefSeq, Jul 2017]
Transcript Variant: This variant (2) differs in the 5' UTR, lacks a portion of the 5' coding region, and initiates translation at an alternate start codon, compared to variant 1. The encoded isoform (b) has a distinct N-terminus and is shorter than isoform 1.