

## Product datasheet for **SC302168**

### ADIG (NM\_001018082) Human Untagged Clone

#### Product data:

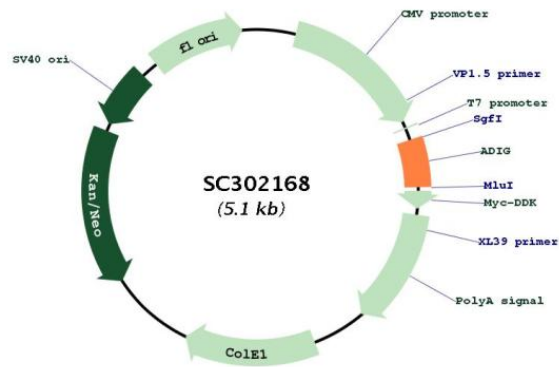
Product Type:	Expression Plasmids
Product Name:	ADIG (NM_001018082) Human Untagged Clone
Tag:	Tag Free
Symbol:	ADIG
Synonyms:	SMAF1
Mammalian Cell Selection:	Neomycin
Vector:	pCMV6-Entry (PS100001)
E. coli Selection:	Kanamycin (25 ug/mL)
Fully Sequenced ORF:	>SC302168 representing NM_001018082. Blue=Insert sequence Red=Cloning site Green=Tag(s)

```
GCTCGTTTAGTGAACCGTCAGAATTTTGTAAACGACTCACTATAGGGCGCCGGGAATTCGTCGACTG
GATCCGGTACCGAGGAGATCTGCCGCCCGATCGCC
ATGAAGTACCCTTTGATGCCGCTGGTGAACGACCTCACATTTTCTTCTGGTTTTCTGGTTCTGCCTC
CCTGTGGGTTTGCTGTTGTTATTGATCATCTGGCTACGCTTCTTACTTAGCCAAGATTCAGAGGAAAAT
GACTCCAGTGTGTGCTTGGATTGGGAGCCCTGGAGCAAAGGCCCAGCTGAGTTTTGCTGGAAGGGGACA
CTCCACGGCCAAGAGAAGGAGAGGCCCTGCTGGTGA
ACGCGTACGCGGCCGCTCGAGCAGAAACTCATCTCAGAAGAGGATCTGGCAGCAAATGATATCCTGGAT
TACAAGGATGACGACGATAAGGTTTAAACGGCCGCGC
```

Restriction Sites: Sgfl-Mlul



[View online »](#)

**Plasmid Map:**


**ACCN:** NM\_001018082

**Insert Size:** 243 bp

**OTI Disclaimer:** Our molecular clone sequence data has been matched to the reference identifier above as a point of reference. Note that the complete sequence of our molecular clones may differ from the sequence published for this corresponding reference, e.g., by representing an alternative RNA splicing form or single nucleotide polymorphism (SNP).

**OTI Annotation:** This TrueClone is provided through our Custom Cloning Process that includes sub-cloning into OriGene's pCMV6 vector and full sequencing to provide a non-variant match to the expected reference without frameshifts, and is delivered as lyophilized plasmid DNA.

**Components:** The ORF clone is ion-exchange column purified and shipped in a 2D barcoded Matrix tube containing 10ug of transfection-ready, dried plasmid DNA (reconstitute with 100 ul of water).

**Reconstitution Method:**

1. Centrifuge at 5,000xg for 5min.
2. Carefully open the tube and add 100ul of sterile water to dissolve the DNA.
3. Close the tube and incubate for 10 minutes at room temperature.
4. Briefly vortex the tube and then do a quick spin (less than 5000xg) to concentrate the liquid at the bottom.
5. Store the suspended plasmid at -20°C. The DNA is stable for at least one year from date of shipping when stored at -20°C.

**RefSeq:** [NM\\_001018082.2](#)

**RefSeq Size:** 789 bp

**RefSeq ORF:** 243 bp

**Locus ID:** 149685

**UniProt ID:** [Q0VDE8](#)

**Cytogenetics:** 20q11.23

**Protein Families:** Transmembrane

**MW:** 9.5 kDa

**Gene Summary:** ADIG/SMAF1 is an adipocyte-specific protein that plays a role in adipocyte differentiation (Kim et al., 2005 [PubMed 15567149]; Hong et al., 2005 [PubMed 16132694]).[supplied by OMIM, Mar 2008]

Transcript Variant: This variant (1) represents the longer transcript and encodes the conserved protein.