

## Product datasheet for SC302157

### SERBP1 (NM\_001018069) Human Untagged Clone

#### Product data:

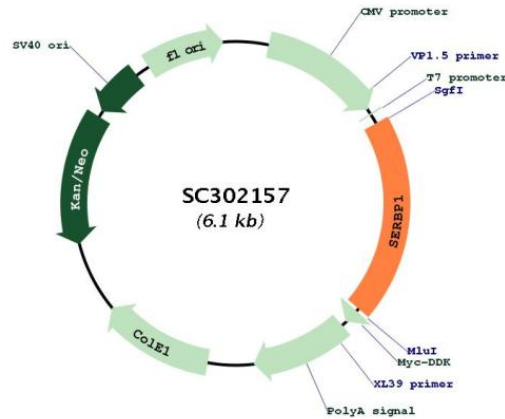
|                           |                                                                                            |
|---------------------------|--------------------------------------------------------------------------------------------|
| Product Type:             | Expression Plasmids                                                                        |
| Product Name:             | SERBP1 (NM_001018069) Human Untagged Clone                                                 |
| Tag:                      | Tag Free                                                                                   |
| Symbol:                   | SERBP1                                                                                     |
| Synonyms:                 | CGI-55; CHD3IP; HABP4L; PAI-RBP1; PAIRBP1                                                  |
| Mammalian Cell Selection: | Neomycin                                                                                   |
| Vector:                   | pCMV6-Entry (PS100001)                                                                     |
| E. coli Selection:        | Kanamycin (25 ug/mL)                                                                       |
| Fully Sequenced ORF:      | >SC302157 representing NM_001018069.<br>Blue=Insert sequence Red=Cloning site Green=Tag(s) |

```
GCTCGTTTGTAGTGAACCGTCAGAATTTTGTAAACGACTACTATAGGGCGCCGGGAATTCGTCGACTG
GATCCGGTACCGAGGAGATCTGCCGCCGCGATCGCC
ATGCGCTGGGCACTTACAGGAAGGCTTCGGCTGCGTGGTCACCAACCGATTGACACAGTTATTTGACGAC
GAATCGGACCCCTTCGAGGTGCTGAAGGACGAGAGAACAAGAAAAAGAAGCCGGCGGGGGCGCGCTT
GGGGGCCCTGGGGCCAAGAGCGCAGCTCAGGCCGCGGCCAGACCACTCCAACGCGGCAGGCAACAG
CTGCGCAAGGAGTCCCAGAAAGACCGCAAGAACCCTGCCCCAGCGTTGGCGTGGTTGACAAGAAA
GAGGAGACGCAGCCGCCCTGGCGCTTAAGAAAGAAGGAATAAGACGAGTTGGAAGAAGACCTGATCAA
CAACTTCAGGGTGAAGGAAAAT AATTGATAGAAGACCAGAAAGGCGACCACCTCGTGAACGAAGATTC
GAAAAGCCACTTGAAGAAAAGGGTGAAGGAGGCGAATTTTCAGTTGATAGACCGATTATTGACCGACCT
ATTCGAGGTCTGGTGGTCTTGGAAAGAGGTCGAGGGGGCCGTTGGACGTGGAATGGCCGAGGAGATGGA
TTTGATTCTCGTGGCAAACGTGAATTTGATAGGCATAGTGAAGTATGATAGTCTCTTTTTCACATTAC
AGTGGCCTGAAGCAGCAGGACAAACGTGGAGGTAGCGGATCTCACAACCTGGGAACTGTCAAAGACGAA
TTAACTGACTTGGATCAATCAAATGTGACTGAGGAAACACCTGAAGGTGAAGAACATCATCCAGTGGCA
GACACTGAAAATAAGGAGAATGAAGTTGAAGAGGTAAGAGGAGGTCCTCAAAGAGATGACTTTGGAT
GAGTGAAGGCTATTCAAATAAGGACCGGGCAAAGTAGAATTAATATCCGAAAACCAATGAAGGT
GCTGATGGGCAGTGAAGAAGGATTTGTTCTTCATAAATCAAAGAGTGAAGAGGCTCATGCTGAAGAT
TCGGTTATGACCATCATTTCCGGAAGCCAGCAATGATATAACGTCTCAGCTGGAGATCAATTTTGGGA
GACCTTGCCCGCCAGGACGTGGCGGCAGGGGAGGACGAGGTGGACGTGGCGTGGTGGCGCCCAAC
CGTGGCAGCAGGACCGACAAGTCAAGTCTTCTGCTCCTGATGTGGATGACCCAGAGGCATTCCAGCT
CTGGCTTAA
ACGCGTACGCGGCCGCTCGAGCAGAACTCATCTCAGAAGAGGATCTGGCAGCAATGATATCCTGGAT
TACAAGGATGACGACGATAAGGTTTAAACGGCCGCGC
```

Restriction Sites: Sgfl-MluI



[View online »](#)

**Plasmid Map:**


**ACCN:** NM\_001018069

**Insert Size:** 1182 bp

**OTI Disclaimer:** Our molecular clone sequence data has been matched to the reference identifier above as a point of reference. Note that the complete sequence of our molecular clones may differ from the sequence published for this corresponding reference, e.g., by representing an alternative RNA splicing form or single nucleotide polymorphism (SNP).

**OTI Annotation:** This TrueClone is provided through our Custom Cloning Process that includes sub-cloning into OriGene's pCMV6 vector and full sequencing to provide a non-variant match to the expected reference without frameshifts, and is delivered as lyophilized plasmid DNA.

**Components:** The ORF clone is ion-exchange column purified and shipped in a 2D barcoded Matrix tube containing 10ug of transfection-ready, dried plasmid DNA (reconstitute with 100 ul of water).

**Reconstitution Method:**

1. Centrifuge at 5,000xg for 5min.
2. Carefully open the tube and add 100ul of sterile water to dissolve the DNA.
3. Close the tube and incubate for 10 minutes at room temperature.
4. Briefly vortex the tube and then do a quick spin (less than 5000xg) to concentrate the liquid at the bottom.
5. Store the suspended plasmid at -20°C. The DNA is stable for at least one year from date of shipping when stored at -20°C.

**RefSeq:** [NM\\_001018069.1](#)

**RefSeq Size:** 6719 bp

**RefSeq ORF:** 1182 bp

**Locus ID:** 26135

**UniProt ID:** [Q8NC51](#)

**Cytogenetics:** 1p31.3

**MW:** 43.1 kDa

**Gene Summary:** May play a role in the regulation of mRNA stability. Binds to the 3'-most 134 nt of the SERPINE1/PAI1 mRNA, a region which confers cyclic nucleotide regulation of message decay. Seems to play a role in PML-nuclear bodies formation (PubMed:28695742).[UniProtKB/Swiss-Prot Function]  
Transcript Variant: This variant (3) uses an alternate, in-frame splice site in the coding region, compared to variant 1. It encodes isoform 3, which is shorter than isoform 1.