

Product datasheet for **SC302147**

DKK3 (NM_001018057) Human Untagged Clone

Product data:

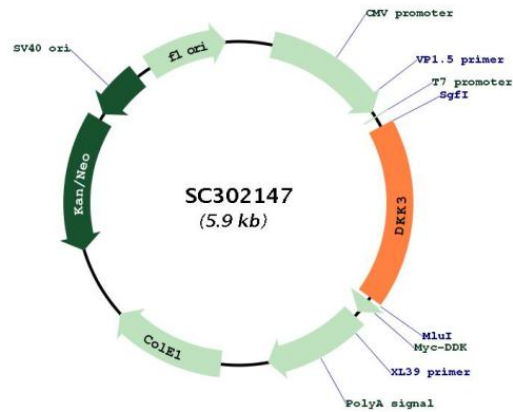
Product Type:	Expression Plasmids
Product Name:	DKK3 (NM_001018057) Human Untagged Clone
Tag:	Tag Free
Symbol:	DKK3
Synonyms:	REIC; RIG
Mammalian Cell Selection:	Neomycin
Vector:	pCMV6-Entry (PS100001)
E. coli Selection:	Kanamycin (25 ug/mL)
Fully Sequenced ORF:	>SC302147 representing NM_001018057. Blue=Insert sequence Red=Cloning site Green=Tag(s)

```
GCTCGTTTGTAGTGAACCGTCAGAATTTTGTAAACGACTACTATAGGGCGCCGGGAATTCGTGACTG
GATCCGGTACCGAGGAGATCTGCCGCCGCGATCGCC
ATGCGAGCGCTTGGGGCCACCCTGCTGTGCCTGCTGCTGGCGCGCGGTCCCCACGGCCCCGCGCCC
GCTCCGACGGCGACCTCGGCTCCAGTCAAGCCCGCCGGCTCTCAGCTACCCGAGGAGGAGGCCACC
CTCAATGAGATGTTCCGCGAGGTTGAGGAACTGATGGAGGACACGCAGCACAAATTGCGCAGCGGGTG
GAAGAGATGGAGGCAGAAGAAGCTGCTGCTAAAGCATCATCAGAAGTGAACCTGGCAAACCTACCTCCC
AGCTATCACAATGAGACCAACACAGACACGAAGTTGAAATAATACCATCCATGTGACCGAGAAATT
CACAAGATAACCAACAACCAGACTGGACAAATGGTCTTTTCAGAGACAGTTATCACATCTGTGGGAGAC
GAAGAAGGCAGAAGGAGCCACGAGTGCATCATCGACGAGGACTGTGGGCCAGCATGTACTGCCAGTTT
GCCAGTTCCAGTACACCTGCCAGCCATGCCGGGGCCAGAGGATGCTCTGCACCCGGGACAGTGAGTGC
TGTGGAGACCAGCTGTGTGTCTGGGGTCACTGCACCAAAATGGCCACCAGGGGCAGCAATGGGACCATC
TGTGACAACCAGAGGGACTGCCAGCCGGGGCTGTGCTGTGCCTCCAGAGAGGCCGTGTTCCCTGTG
TGCACACCCCTGCCCGTGGAGGGCGAGCTTTGCCATGACCCCGCCAGCCGGCTTCTGGACCTCATCAC
TGGGAGCTAGAGCCTGATGGAGCCTTGGACCGATGCCCTTGTGCCAGTGGCCTCCTCTGCCAGCCCCAC
AGCCACAGCCTGGTGTATGTGTGCAAGCCGACCTTCGTGGGAGCCGTGACCAAGATGGGAGATCCTG
CTGCCAGAGAGGTCCCCGATGAGTATGAAGTTGCGAGCTTTCATGGAGGAGGTGCCAGGAGCTGGAG
GACCTGGAGAGGAGCCTGACTGAAGAGATGGCGCTGAGGGAGCCTGCCGGCTGCCGCCGCTGCACTGCTG
GGAGGGGAAGAGATTTAG
ACGCGTACGCGGCCGCTCGAGCAGAAACTCATCTCAGAAGAGGATCTGGCAGCAAATGATATCCTGGAT
TACAAGGATGACGACGATAAGGTTTAAACGGCCGGC
```

Restriction Sites: SgfI-MluI



Plasmid Map:



ACCN: NM_001018057

Insert Size: 1053 bp

OTI Disclaimer: Our molecular clone sequence data has been matched to the reference identifier above as a point of reference. Note that the complete sequence of our molecular clones may differ from the sequence published for this corresponding reference, e.g., by representing an alternative RNA splicing form or single nucleotide polymorphism (SNP).

OTI Annotation: This TrueClone is provided through our Custom Cloning Process that includes sub-cloning into OriGene's pCMV6 vector and full sequencing to provide a non-variant match to the expected reference without frameshifts, and is delivered as lyophilized plasmid DNA.

Components: The ORF clone is ion-exchange column purified and shipped in a 2D barcoded Matrix tube containing 10ug of transfection-ready, dried plasmid DNA (reconstitute with 100 ul of water).

Reconstitution Method:

1. Centrifuge at 5,000xg for 5min.
2. Carefully open the tube and add 100ul of sterile water to dissolve the DNA.
3. Close the tube and incubate for 10 minutes at room temperature.
4. Briefly vortex the tube and then do a quick spin (less than 5000xg) to concentrate the liquid at the bottom.
5. Store the suspended plasmid at -20°C. The DNA is stable for at least one year from date of shipping when stored at -20°C.

RefSeq: [NM_001018057.1](#)

RefSeq Size: 2587 bp

RefSeq ORF: 1053 bp

Locus ID: 27122

UniProt ID: [Q9UBP4](#)

Cytogenetics: 11p15.3

Protein Families: Druggable Genome, Secreted Protein

MW: 38.4 kDa

Gene Summary: This gene encodes a protein that is a member of the dickkopf family. The secreted protein contains two cysteine rich regions and is involved in embryonic development through its interactions with the Wnt signaling pathway. The expression of this gene is decreased in a variety of cancer cell lines and it may function as a tumor suppressor gene. Alternative splicing results in multiple transcript variants encoding the same protein. [provided by RefSeq, Jul 2008]

Transcript Variant: This variant (3) differs in the 5' UTR compared to variant 1. Variants 1, 2, and 3 encode the same protein.