

Product datasheet for **SC302083**

DCAF8L1 (NM_001017930) Human Untagged Clone

Product data:

Product Type:	Expression Plasmids
Product Name:	DCAF8L1 (NM_001017930) Human Untagged Clone
Tag:	Tag Free
Symbol:	DCAF8L1
Synonyms:	WDR42B
Mammalian Cell Selection:	Neomycin
Vector:	pCMV6-Entry (PS100001)
E. coli Selection:	Kanamycin (25 ug/mL)

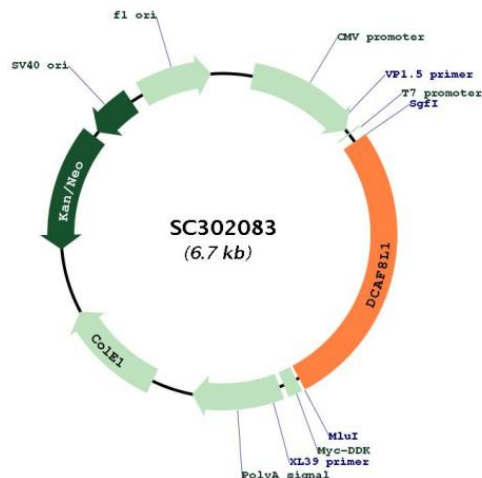


[View online »](#)

Fully Sequenced ORF: >SC302083 representing NM_001017930.
Blue=Insert sequence Red=Cloning site Green=Tag(s)

```
GCTCGTTTAGTGAACCGTCAGAATTTTGTAAACGACTCACTATAGGGCGGCCGGGAATTCGTGCGACTG
GATCCGGTACCGAGGAGATCTGCCGCCCGCATCGCC
ATGTCCCACCAAGAGGGCAGCACAGGTGGCTTACCAGACTTAGTGACTGAAAGCCTGTTCCAGCAGCCCA
GAGGAGCAGTCTGGAGTAGCAGCGGTGACGGCGGCCTCCTCAGACATTGAAATGGCAGCCACAGAGCCA
TCGACCGGAGATGGTGGTGATACCAGGGATGGTGGTTTCTGAACGATGCCAGCAGAAAATCAAAC
ACAGACTCAGAAAAGTTCAAGTGAAGACGTCGAACCTGAAAGCATGGGTGAAGTTTATTTGGTTACCCG
TTAGTGGGAGAGGAGACAGAAAGGGAGGAGGAAGAAGAAGAGATGGAGGAGGAAGGGGAGGAGGAAGAA
CAGCCTCGGATGTGTCCACGATGCGGTGGCACCAACCATGATCAGTGTGTTGTTAGACGAGGATCAGGCG
TTGGAGGAGTGGATTTCTCAGAGACATCTGCCCTGCCCGATCTCGCTGGCAAGTCCTTACTGCTCTT
CGCCAGCGGCAGCTGGTTCAGTGCCCGCTTTGTATATGAGGCCTGTGGGGCAAGAACCTTTGTGCAG
CGTTTCCGCTGCAGTATCTTCTTGAAGCCATGCCGGTCTGTGCAGTACCATACTTTAACAGCGT
GGCACCCGACTGGCCAGTAGCGGTGATGACTTAAGGGTGATAGTGTGGGACTGGGTGCGGCAGAAGCCA
GTACTGAACTTTGAGAGTGGTCAGGATTAATGTCATCCAGGCTAAGTTCTTTCTTAACGTGGTGAT
TCCACTCTGGCCATGTGTGGCCATGATGGACAGGTACGGGTAGCAGAACTAATTAATGCATCATATTGC
GAGAATACTAAGCGTGTGGCCAAGCACAGGGGACCTGCCACGAGTTGGCTCTGGAGCCAGACTCTCCT
TATAAGTTCCTCACTTCAGGTGAAGATGCCGTTGTGTTACCAATTGACCTCAGGCAAGACCGGCCAGCT
TCAAAAAGTTGGTAACAAGAGAAAAATGATAAGAAAAGTCGGACTGTATACAATCTCTATGAATCTGGC
AATATTTACCAATTTGCAGTGGGTGGACATGATCAGTTTGAAGATTTATGACCAGAGGAGAATTGAT
AAGAAAGAAAACAATGGAGTACTCAAGAAATTCCTCCTCATCTGGTTTATTGTGATTTCCCAACA
AACATCACCTGCGTTGTGTACAGCCACGATGGCACAGAGCTCCTGGCCAGCTACAATGATGAAGATATT
TACCTCTTCAACTCCTCTCAGTGATGGTGCTCAATATGTTAAGAGATATAAGGGGCACAGAAAATAA
GACACAATCAAATGTGTTAATTTCTATGGCCCCGGAGTGAGTTTGTGCTGAGCGGTAGTGATTGTGGG
CACGTCTTCTTGGGAGAAATCATCCTCCAGATCATCCAGTTCATGGAGGGGACAGAGGAGATATA
GTAAACTGTCTTGAACCCACCCCTTACCTACCTGTGTTGGCGACCAGTGGCCTAGATCAGCATGTCAGG
ATCTGGACACCCACAGCTAAAAGTCCACTGAGCTTACTGGGTTAAAAGATGTGATTAAGAAGAACAAG
CAGGAGCGAGATGAAGACAACCTGAACTATACGGACTCGTTTGACAACCGCATGCTTCGGTTCTTCGTG
CGTCACCTGTTACAGAGAGCTCATCAACCCGGCTGGAGAGATCATGGAGCTGAGTTCAGATGAAGAA
GAGTTGGATGAGTCTTCCAGCACCTCAGATACATCCGAGGAGGAGGCCAAGATCGAGTGCAGTGCATA
CCATCCTGA
ACGCGTACGCGGCCGCTCGAGCAGAACTCATCTCAGAAGAGGATCTGGCAGCAAATGATATCCTGGAT
TACAAGGATGACGACGATAAGGTTTAAACGGCCGGC
```

Restriction Sites: SgfI-MluI

Plasmid Map:


ACCN: NM_001017930

Insert Size: 1803 bp

OTI Disclaimer: Our molecular clone sequence data has been matched to the reference identifier above as a point of reference. Note that the complete sequence of our molecular clones may differ from the sequence published for this corresponding reference, e.g., by representing an alternative RNA splicing form or single nucleotide polymorphism (SNP).

OTI Annotation: This TrueClone is provided through our Custom Cloning Process that includes sub-cloning into OriGene's pCMV6 vector and full sequencing to provide a non-variant match to the expected reference without frameshifts, and is delivered as lyophilized plasmid DNA.

Components: The ORF clone is ion-exchange column purified and shipped in a 2D barcoded Matrix tube containing 10ug of transfection-ready, dried plasmid DNA (reconstitute with 100 ul of water).

Reconstitution Method:

1. Centrifuge at 5,000xg for 5min.
2. Carefully open the tube and add 100ul of sterile water to dissolve the DNA.
3. Close the tube and incubate for 10 minutes at room temperature.
4. Briefly vortex the tube and then do a quick spin (less than 5000xg) to concentrate the liquid at the bottom.
5. Store the suspended plasmid at -20°C. The DNA is stable for at least one year from date of shipping when stored at -20°C.

RefSeq: [NM_001017930.1](#)

RefSeq Size: 3457 bp

RefSeq ORF: 1803 bp

Locus ID: 139425

UniProt ID: [A6NGE4](#)

Cytogenetics: Xp21.3

MW: 67.4 kDa

Gene Summary: This gene encodes a member of the WD repeat protein family. WD repeats are minimally conserved regions of approximately 40 amino acids typically bracketed by Gly-His and Trp-Asp (GH-WD), which may facilitate the formation of heterotrimeric or multi-protein complexes. Members of this family are involved in a variety of cellular processes, including cell cycle progression, signal transduction, apoptosis, and gene regulation. This gene appears to represent an intronless retrocopy of a related multi-exon gene located on chromosome 1. However, the CDS of this intronless gene remains intact, it is conserved in other primate species, it is known to be transcribed, and it is therefore thought to encode a functional protein. [provided by RefSeq, May 2010]