

Product datasheet for **SC302060**

BTBD11 (NM_001017523) Human Untagged Clone

Product data:

| | |
|---------------------------|--|
| Product Type: | Expression Plasmids |
| Product Name: | BTBD11 (NM_001017523) Human Untagged Clone |
| Tag: | Tag Free |
| Symbol: | BTBD11 |
| Synonyms: | ABTB2B |
| Mammalian Cell Selection: | Neomycin |
| Vector: | pCMV6-Entry (PS100001) |
| E. coli Selection: | Kanamycin (25 ug/mL) |

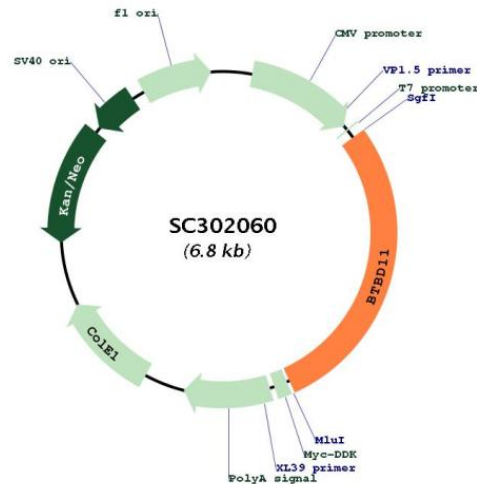


[View online »](#)

Fully Sequenced ORF: >SC302060 representing NM_001017523.
Blue=Insert sequence Red=Cloning site Green=Tag(s)

```
GCTCGTTTAGTGAACCGTCAGAATTTTGTAAACGACTCACTATAGGGCGGCCGGGAATTCGTGACTG
GATCCGGTACCGAGGAGATCTGCCGCCGCGATCGCC
ATGAGGAACTGAGGCCAAGGATTCAGAGAGCCTGCCCGGGGTACCAGGTGCGGTCCGGATGTCTC
CAAAGGCTCTCCACTACTCTGGAATTCAGAGGCCCTTCTCGTGTGCTGCCGCCGTGATGGAGTGGATC
CGGGTGGCCGTGGCGCACGCCGCCACCGCCGAGCTTCTCCATGGACAGCGACGACGTCCGCCAGGCG
GCCCGGTGCTGTGCTGCCCGCGTGGACTGCGAGCCGCGCCAGCTCAGGGCCGACGACTGCTTTTGTGCA
TCTCGAAAGCTGGATGCGGTGGCCATCGAAGCCAAGTTTAAGCAGGACCTGGGTTTCCGGATGCTGAAC
TGTGGACGAACAGACCTGGTGAAGCAGGACGTGTCTCTGCTGGGGCCCGATGGGATCAACACCATGAGC
GAACAGGGCATGACTCCCTGATGTATGCCTGCGTCCGTGGGACGAGGCGATGGTTTCCAGATGCTGCTG
GATGCCGAGCTGACCTGAATGTGGAGTTGTGACTACTCCTATAAATATCCATCCGTCCACCCCGAG
ACCCGCCATTGGACGGCTCTGACTTTTGTGTGTTGCATGGACATATTCCTGTAGTTCAGCTCCTCCTG
GATGCTGGGGCAAGGTGGAAGGCTCAGTGGAGCATGGCGAGGAGAACTACTCGAAACACCCCTCCAG
CTGGCAGCTGCTGTAGGAAATTTGAGCTGGTTAGTTTGTGTTGGAGCGTGGTCCGATCCCTGATA
GGAACCATGTACAGGAATGGAATTTCTACAACCCCCAGGGTATATGAACTCTTTCAGCCAGGCTGCA
GCCACGGACACAGGAATGTGTTCCGAAACTGCTCGCCAGCCAGAGAAGGAGAAGAGTGATATCCTG
TCCCTGGAGGAGATTCTGGCCGAGGGGACTGACCTGGCGGAGACAGCCCCGCCCCCTTGTGCGCCAGC
CGCAACAGCAAGGCCAACTGAGGGCCCTGAGGGAGGCCATGTATCACAGCGTGGATGGCTACGTG
GATGTCACAATTGATATCAGGAGCATAGGCGTCCCGTGGACTCTGCACACGTGGCTGGAGTCTTTGCGG
ATCGCCTTCCAGCAGCACCGCAGGCCTCATCCAGTGTGTTAAAGGAGTTTAAAGCATTGAGGAG
GAGGAATACACGGAGGAGCTCGTTACCCAAGGCCTGCCCTGATGTTTGGATCCTGAAAGCGAGCAAG
AATGAAGTGATCAGCCAGCAGCTGTGCGTCATCTTACACACTGCTACGGGCCCTACCCCATCCCCAAG
CTCACAGAAATCAAACGAAACAGACCTCGCGCTTGGATCCTCATTCTTAAACAATAAAGAAATGTCT
GATGTTACATTTCTGGTAGAAGGAAGACCATTTTATGCTCACAAAGTGTGTTATTTACAGCCTCTCCA
AGGTTCAAAGCACTCCTCTCCAGCAAGCCGACAAATGATGGCACCTGCATAGAGATTGGTTATGTGAAA
TACTCCATCTTTAGCTGGTTATGCAGTATCTCTACTATGGTGGCCAGAGTCACTGCTCATTAAAAAC
AATGAGATCATGGAGCTTCTGTCTGCTGCTAAGTTTTTCCAGTGGAGGCTTTCAGCGACACTGTGAG
ATTATCTGTGCGAAAAGCATCAATACCGACAACGTGTGGATATTTACAACCATGCCAAGTTTCTTGGG
GTCACAGAGCTCTCAGCATATTGCGAAGGCTACTTTCTCAAAAACATGATGGTCCCTATTGAAAACGAA
GCATTAAGCAGCTCCTGTATGACAAAAATGGTGAAGGGACCGGCCAGGATGTGCTCCAGGACTTACAG
AGGACGTTGGCCATCAGAATTCAGTCCATCCACTTGTGCTTCCAAAGGTTCCGTGGTATGA
ACGCGTACGCGGCCGCTCGAGCAGAACTCATCTCAGAAGAGGATCTGGCAGCAAATGATATCCTGGAT
TACAAGGATGACGACGATAAGGTTTAAACGGCCGGC
```

Restriction Sites: Sgfl-Mlul

Plasmid Map:


ACCN: NM_001017523

Insert Size: 1926 bp

OTI Disclaimer: Our molecular clone sequence data has been matched to the reference identifier above as a point of reference. Note that the complete sequence of our molecular clones may differ from the sequence published for this corresponding reference, e.g., by representing an alternative RNA splicing form or single nucleotide polymorphism (SNP).

OTI Annotation: This TrueClone is provided through our Custom Cloning Process that includes sub-cloning into OriGene's pCMV6 vector and full sequencing to provide a non-variant match to the expected reference without frameshifts, and is delivered as lyophilized plasmid DNA.

Components: The ORF clone is ion-exchange column purified and shipped in a 2D barcoded Matrix tube containing 10ug of transfection-ready, dried plasmid DNA (reconstitute with 100 ul of water).

Reconstitution Method:

1. Centrifuge at 5,000xg for 5min.
2. Carefully open the tube and add 100ul of sterile water to dissolve the DNA.
3. Close the tube and incubate for 10 minutes at room temperature.
4. Briefly vortex the tube and then do a quick spin (less than 5000xg) to concentrate the liquid at the bottom.
5. Store the suspended plasmid at -20°C. The DNA is stable for at least one year from date of shipping when stored at -20°C.

RefSeq: [NM_001017523.1](#)

RefSeq Size: 3900 bp

RefSeq ORF: 1926 bp

Locus ID: 121551

UniProt ID: [A6QL63](#)

Cytogenetics: 12q23.3

MW: 71.9 kDa