

## Product datasheet for SC302041

### S100P binding protein (S100BP) (NM\_001017406) Human Untagged Clone

#### Product data:

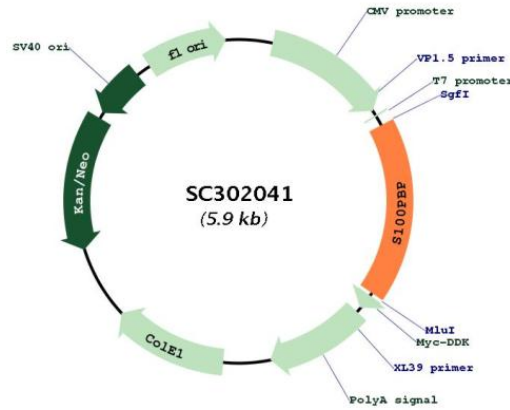
Product Type:	Expression Plasmids
Product Name:	S100P binding protein (S100BP) (NM_001017406) Human Untagged Clone
Tag:	Tag Free
Symbol:	S100BPB
Synonyms:	DKFZp313K2325; FLJ12903; S100PBPR
Mammalian Cell Selection:	Neomycin
Vector:	pCMV6-Entry (PS100001)
E. coli Selection:	Kanamycin (25 ug/mL)
Fully Sequenced ORF:	>SC302041 representing NM_001017406. Blue=Insert sequence Red=Cloning site Green=Tag(s)

```
GCTCGTTT TAGTGAACCGTCAGAATTTTGT AATACGACTCACTATAGGGCGCCGGGAATTCGTCGACTG
GATCCGGTACCGAGGAGATCTGCCGCC GCGATCGCC
ATGATGTGCTCACGGGTGCCCTCTGAACAGTCTTCTGGTACCTCTCTTGCCTAAAGACGGTGCCCA
TTTTCTGGGATTCCTTGGATGAGGATGGATTGGATGACTCCTTGGTGGAGCTGTCAGAGGGAGAAGAA
GATGATGGTGATGTAATTACACAGAGGAAGAGATTGATGCACTGTTGAAGGAAGATGACCCATCATAT
GAGCAGTCTTCTGGGGAAGATGATGGTGGGCATGTTGAGAAGGGAGAAAGAGGGAGTCAAATTTACTT
GATACTCCCCGAGAGAAAAATTCATCGTACAGCCTGGGACCAGTAGCTGAGACTCCTGACCTCTTCAA
CTACCTCAGCTAAGTACATCAAGTGGTCATGGACCAGCTCATACTAAACCATTAACAGACGCTCTGTA
CTAGAAAAGAATCTTATAAAAGTAACTGTTGCACCATTTAATCCAACAGTTTGTGATGCTGCTTGAT
AAGGACGAGACTGATTCGTCAAAGATACTGAAAACTCTTCCCTTGGAGAAGAGATGAGAGAAGAT
GGTCTTAGCCCAAATGAAAGCAAATTTGTACTGAATCTGAAGGGATCAGCCCCAACTCTGCCTGG
AATGGGCCCCAGCTCTCTTCTTCAAACAATAACTTTCAACAGACTGTCTCTGATAAAAAATATGCCTGAC
AGTGAGAACCCCTACGTCTGTATTCTCTCGGATCTCAGACCATTGAGAGACTCCTAATATGGAGTTATCC
TGCAGAAATGGTGGTTCACACAAGTCAAGTTGTGAAATGAGATCTCTGGTTGTTCCACCTCATCAAC
AAAGATGTTCTTAACAAGGATTCTGGGAAGATGAAAGGCCATGAGAGAAGACTAGGCAAAGTCATTCCT
GTTCTACAACTAAGACCAGGACTAATGTTCCGACGTTTTCCAGTCAAATCTAGAACAGCAGAAGCAG
CTTTATCTCAGGAGTGCTATTGCTCATATAGAAGACCCAGAGGACACTAACCAAGGATTGA
ACGCGTACGCGGCCGCTCGAGCAGAAACTCATCTCAGAAGAGGATCTGGCAGCAAATGATATCCTGGAT
TACAAGGATGACGACGATAAGGTTTAAACGGCCGGC
```

Restriction Sites: SgfI-MluI



[View online »](#)

**Plasmid Map:**


**ACCN:** NM\_001017406

**Insert Size:** 1026 bp

**OTI Disclaimer:** Our molecular clone sequence data has been matched to the reference identifier above as a point of reference. Note that the complete sequence of our molecular clones may differ from the sequence published for this corresponding reference, e.g., by representing an alternative RNA splicing form or single nucleotide polymorphism (SNP).

**OTI Annotation:** This TrueClone is provided through our Custom Cloning Process that includes sub-cloning into OriGene's pCMV6 vector and full sequencing to provide a non-variant match to the expected reference without frameshifts, and is delivered as lyophilized plasmid DNA.

**Components:** The ORF clone is ion-exchange column purified and shipped in a 2D barcoded Matrix tube containing 10ug of transfection-ready, dried plasmid DNA (reconstitute with 100 ul of water).

**Reconstitution Method:**

1. Centrifuge at 5,000xg for 5min.
2. Carefully open the tube and add 100ul of sterile water to dissolve the DNA.
3. Close the tube and incubate for 10 minutes at room temperature.
4. Briefly vortex the tube and then do a quick spin (less than 5000xg) to concentrate the liquid at the bottom.
5. Store the suspended plasmid at -20°C. The DNA is stable for at least one year from date of shipping when stored at -20°C.

**RefSeq:** [NM\\_001017406.1](#)

**RefSeq Size:** 1483 bp

**RefSeq ORF:** 1026 bp

**Locus ID:** 64766

**Cytogenetics:** 1p35.1

**MW:** 37.3 kDa

**Gene Summary:** This gene encodes a protein that was originally identified by its interaction with S100 calcium-binding protein P. Expression of this protein has been reported to be associated with pancreatic ductal adenocarcinoma. Alternatively spliced transcript variants have been described. [provided by RefSeq, Jan 2012]