

## Product datasheet for **SC301783**

### **PAGE5 (NM\_001013435) Human Untagged Clone**

#### Product data:

**Product Type:** Expression Plasmids  
**Product Name:** PAGE5 (NM\_001013435) Human Untagged Clone  
**Tag:** Tag Free  
**Symbol:** PAGE5  
**Synonyms:** CT16; CT16.1; CT16.2; GAGEE1; PAGE-5  
**Mammalian Cell Selection:** Neomycin  
**Vector:** pCMV6-Entry (PS100001)  
**E. coli Selection:** Kanamycin (25 ug/mL)  
**Fully Sequenced ORF:** >SC301783 representing NM\_001013435.  
 Blue=Insert sequence Red=Cloning site Green=Tag(s)

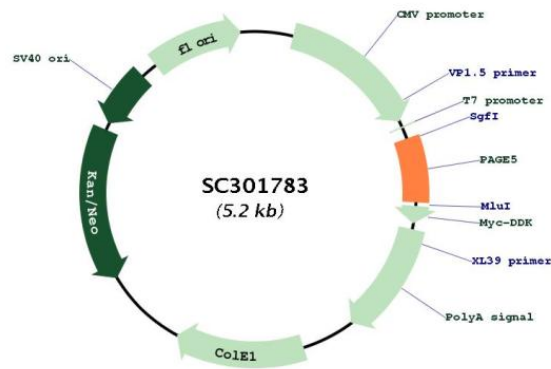
```
GCTCGTTTAGTGAACCGTCAGAATTTTGTAAACGACTCACTATAGGGCGCCGGGAATTCGTCGACTG
GATCCGGTACCGAGGAGATCTGCCGCCGCGATCGCC
ATGAGTGAGCATGTAACAAGATCCCAATCCTCAGAAAGAGGAAATGACCAAGAGTCTTCCAGCCAGTT
GGACCTGTGATTGTCCAGCAGCCCACTGAGGAAAAACGTCAAGAAGAGGAACCACCAACTGATAATCAG
GGTATTGCACCTAGTGGGGAGATCAAAAATGAAGGAGCACCTGCTGTTCAAGGGACTGATGTGGAAGCT
TTTCAACAGGAAGTGGCTCTGCTTAAGATAGAGGATGCACCTGGAGATGGTCCTGATGTCAGGGAGGGG
ACTCTGCCCACTTTTATCCCACTAAAGTCTGGAAGCAGGTGAAGGGCAACTATAG
ACGCGTACGCGGCCGCTCGAGCAGAAACTCATCTCAGAAGAGGATCTGGCAGCAAATGATATCCTGGAT
TACAAGGATGACGACGATAAGGTTTAAACGGCCGCGC
```

**Restriction Sites:** Sgfl-Mlul



[View online »](#)

Plasmid Map:



ACCN: NM\_001013435

Insert Size: 333 bp

OTI Disclaimer: Our molecular clone sequence data has been matched to the reference identifier above as a point of reference. Note that the complete sequence of our molecular clones may differ from the sequence published for this corresponding reference, e.g., by representing an alternative RNA splicing form or single nucleotide polymorphism (SNP).

OTI Annotation: This TrueClone is provided through our Custom Cloning Process that includes sub-cloning into OriGene's pCMV6 vector and full sequencing to provide a non-variant match to the expected reference without frameshifts, and is delivered as lyophilized plasmid DNA.

Components: The ORF clone is ion-exchange column purified and shipped in a 2D barcoded Matrix tube containing 10ug of transfection-ready, dried plasmid DNA (reconstitute with 100 ul of water).

**Reconstitution Method:**

1. Centrifuge at 5,000xg for 5min.
2. Carefully open the tube and add 100ul of sterile water to dissolve the DNA.
3. Close the tube and incubate for 10 minutes at room temperature.
4. Briefly vortex the tube and then do a quick spin (less than 5000xg) to concentrate the liquid at the bottom.
5. Store the suspended plasmid at -20°C. The DNA is stable for at least one year from date of shipping when stored at -20°C.

**RefSeq:** [NM\\_001013435.2](#)

**RefSeq Size:** 572 bp

**RefSeq ORF:** 333 bp

**Locus ID:** 90737

**UniProt ID:** [Q96GU1](#)

**Cytogenetics:** Xp11.21

**MW:** 11.8 kDa

**Gene Summary:** This gene is a member of family of proteins that are expressed in a variety of tumors and in some fetal and reproductive tissues. The encoded protein may protect cells from programmed cell death. Multiple alternatively spliced transcript variants encoding distinct isoforms have been found. [provided by RefSeq, Jan 2015]  
Transcript Variant: This variant (2) uses an alternate splice site in the 5' region and initiates translation from a downstream start codon, compared to variant 1. The encoded isoform (2) has a shorter N-terminus than isoform 1.