

Product datasheet for **SC301082**

SIN1 (MAPKAP1) (NM_001006621) Human Untagged Clone

Product data:

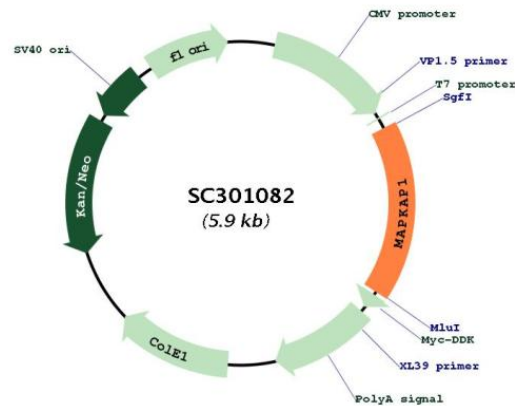
Product Type:	Expression Plasmids
Product Name:	SIN1 (MAPKAP1) (NM_001006621) Human Untagged Clone
Tag:	Tag Free
Symbol:	MAPKAP1
Synonyms:	JC310; MIP1; SIN1; SIN1b; SIN1g
Mammalian Cell Selection:	Neomycin
Vector:	pCMV6-Entry (PS100001)
E. coli Selection:	Kanamycin (25 ug/mL)
Fully Sequenced ORF:	>SC301082 representing NM_001006621. Blue=Insert sequence Red=Cloning site Green=Tag(s)

```
GCTCGTTTGTAGTGAACCGTCAGAATTTTGTAAACGACTACTATAGGGCGCCGGGAATTCGTCGACTG
GATCCGGTACCGAGGAGATCTGCCGCCGCGATCGCC
ATGACCGTGGTGACAATGGCCAGCGCCAGGGTGCAGGACCTGATCGGGCTCATCTGCTGGCAGTATACA
AGCGAAGGACGGGAGCCGAAGCTCAATGACAATGTCAGTGCCTACTGCCTGCATATTGCTGAGGATGAT
GGGGAGGTGGACACCGATTTCCCCCGCTGGATTCCAATGAGCCATTATAAGTTTGGCTTCAGTACT
TTGGCCCTGGTTGAAAAGTACTCATCTCCTGGTCTGACATCCAAAGAGTCACTCTTTGTTGCAATAAAT
GCTGCTCATGGATTCTCCCTTATTCAGGTGGACAACACAAAGTTACCATGAAGGAAATCTTACTGAAG
GCAGTGAAGCGAAGAAAAGGATCCAGAAAAGTTTCAGGCCCTCAGTACCGCCTGGAGAAGCAGAGCGAG
CCCAATGTCGCCGTTGACCTGGACAGCACTTTGGAGAGCCAGAGCGCATGGGAGTTCTGCCTGGTCCGC
GAGAACAGTTCAAGGCAGACGGGGTTTTGAGGAGGATTCGCAAATTGACATAGCCACAGTACAGGAT
ATGCTTAGCAGCCACCATTACAAGTCATTCAAAGTCAGCATGATCCACAGACTGCGATTACAACCGAC
GTACAGCTAGGTATCTCTGGAGACAAAGTAGAGATAGACCCTGTTACGAATCAGAAAAGCCAGCACTAAG
TTTTGGATTAAGCAGAAACCCATCTCAATCGATTCCGACCTGCTCTGTGCCTGTGACCTTGCTGAAGAG
AAAAGCCCAGTCACGCAATATTTAAACTCACGTATCTAAGCAATCACGACTATAAACACCTCTACTTT
GAATCGGACGCTGCTACCGTCAATGAAATTGTGCTCAAGTAACTACATCTGGAATCGCGAGCTAGC
ACTGCCCGGGCTGACTACTTTGCTCAAAAACAAAGAAAAGTGAACAGACGTACGAGCTTCAGCTTCCAG
AAGGAGAAGAAAATCCGGGCAGCAGTGA
ACGCGTACGCGGCCGCTCGAGCAGAAACTCATCTCAGAAGAGGATCTGGCAGCAAATGATATCCTGGAT
TACAAGGATGACGACGATAAGGTTTAAACGGCCGGC
```

Restriction Sites: SgfI-MluI



[View online »](#)

Plasmid Map:


ACCN: NM_001006621

Insert Size: 993 bp

OTI Disclaimer: Our molecular clone sequence data has been matched to the reference identifier above as a point of reference. Note that the complete sequence of our molecular clones may differ from the sequence published for this corresponding reference, e.g., by representing an alternative RNA splicing form or single nucleotide polymorphism (SNP).

OTI Annotation: This TrueClone is provided through our Custom Cloning Process that includes sub-cloning into OriGene's pCMV6 vector and full sequencing to provide a non-variant match to the expected reference without frameshifts, and is delivered as lyophilized plasmid DNA.

Components: The ORF clone is ion-exchange column purified and shipped in a 2D barcoded Matrix tube containing 10ug of transfection-ready, dried plasmid DNA (reconstitute with 100 ul of water).

Reconstitution Method:

1. Centrifuge at 5,000xg for 5min.
2. Carefully open the tube and add 100ul of sterile water to dissolve the DNA.
3. Close the tube and incubate for 10 minutes at room temperature.
4. Briefly vortex the tube and then do a quick spin (less than 5000xg) to concentrate the liquid at the bottom.
5. Store the suspended plasmid at -20°C. The DNA is stable for at least one year from date of shipping when stored at -20°C.

RefSeq: [NM_001006621.1](#)

RefSeq Size: 2977 bp

RefSeq ORF: 993 bp

Locus ID: 79109

UniProt ID: [Q9BPZ7](#)

Cytogenetics: 9q33.3

Protein Families: Druggable Genome

MW: 37.3 kDa

Gene Summary: This gene encodes a protein that is highly similar to the yeast SIN1 protein, a stress-activated protein kinase. Alternatively spliced transcript variants encoding distinct isoforms have been described. Alternate polyadenylation sites as well as alternate 3' UTRs have been identified for transcripts of this gene. [provided by RefSeq, Jul 2008]
Transcript Variant: This variant (5), also known as Sin1e, lacks two alternate in-frame exons in the 5' coding region, and uses a downstream start codon, compared to variant 1. The resulting protein (isoform 4), also known as the delta isoform, has a shorter N-terminus, compared to isoform 1. The existence of this isoform has not been confirmed experimentally. Variants 4 and 5 encode the same isoform (4).