

Product datasheet for **SC301079**

SIN1 (MAPKAP1) (NM_001006618) Human Untagged Clone

Product data:

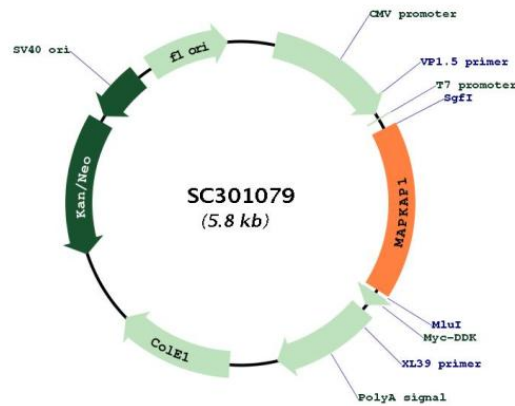
Product Type:	Expression Plasmids
Product Name:	SIN1 (MAPKAP1) (NM_001006618) Human Untagged Clone
Tag:	Tag Free
Symbol:	MAPKAP1
Synonyms:	JC310; MIP1; SIN1; SIN1b; SIN1g
Mammalian Cell Selection:	Neomycin
Vector:	pCMV6-Entry (PS100001)
E. coli Selection:	Kanamycin (25 ug/mL)
Fully Sequenced ORF:	>SC301079 representing NM_001006618. Blue=Insert sequence Red=Cloning site Green=Tag(s)

```
GCTCGTTTAGTGAACCGTCAGAATTTGTAAACGACTCACTATAGGGCGCCGGGAATTCGTCGACTG
GATCCGGTACCGAGGAGATCTGCCGCCGCGATCGCC
ATGGCCTTCTGGACAATCCAATCATTCTAGCTCATATTCGACAGTCACATGTGACCAGTGATGAC
ACGGGAATGTGTGAGATGGTTCTCATTGATCATGATGTTGACCTAGAGAAGATTCATCCTCCTCAATG
CCTGGAGACAGTGGTTCAGAAATTCAGGGAAGCAATGGTGAAGTCAAGGCTATGTATATGCCAGTCA
GTCGATATTACCTCAAGTTGGGACTTTGGTATTAGAAGACGCTCAAACACAGCTCAAAGATTAGAACGA
CTCCGAAAAGAGAGACAAAACAGATCAAATGCAAAAATATTCAGTGGAAAGAAAGAAATTCCTAAGCAA
TCAGCCCAGGAGTTAAAGTCACTGTTTAAAAAATCTCTCAAAGAGAAGCCTCCAATTTCTGGGAAG
CAGTCGATATTATCTGTACGCCTAGAACAGTGCCTCTGCAGCTGAATAACCCCTTTAACGAGTATTCC
AAATTTGATGGCAAGGGTCATGTAGGTACAACAGCAACCAAGAAGATCGATGTCTACCTCCCTCTGCAC
TCGAGCCAGGACAGACTGCTGCCAATGACCGTGGTGACAAATGGCCAGCGCCAGGGTGCAGGACCTGATC
GGGCTCATCTGCTGGCAGTATACAAGCGAAGGACGGGAGCCGAAGCTCAATGACAATGTCAGTGCCTAC
TGCTGCATATTGCTGAGGATGATGGGGAGGTGGACACCGATTTCCCCCGCTGGATTCCAATGAGCCC
ATTCATAAGTTTGGCTTCAGTACTTTGGCCCTGGTTGAAAAGTACTCATCTCCTGGTCTGACATCCAAA
GAGTCACTCTTTGTTTGAATAAATGCTGCTCATGGATTCTCCCTTATTCAGGTGGACAACACAAAGGTT
ACCATGAAGGAAATCTTACTGAAGGCAGTGAAGCGAAGAAAAGGATCCCAGAAAGTTTCAGGTGCTTGT
GACTAA
ACGCGTACGCGGCCGCTCGAGCAGAAACTCATCTCAGAAGAGGATCTGGCAGCAAATGATATCCTGGAT
TACAAGGATGACGACGATAAGGTTTAAACGGCCGGC
```

Restriction Sites: SgfI-MluI



[View online »](#)

Plasmid Map:


ACCN: NM_001006618

Insert Size: 972 bp

OTI Disclaimer: Our molecular clone sequence data has been matched to the reference identifier above as a point of reference. Note that the complete sequence of our molecular clones may differ from the sequence published for this corresponding reference, e.g., by representing an alternative RNA splicing form or single nucleotide polymorphism (SNP).

OTI Annotation: This TrueClone is provided through our Custom Cloning Process that includes sub-cloning into OriGene's pCMV6 vector and full sequencing to provide a non-variant match to the expected reference without frameshifts, and is delivered as lyophilized plasmid DNA.

Components: The ORF clone is ion-exchange column purified and shipped in a 2D barcoded Matrix tube containing 10ug of transfection-ready, dried plasmid DNA (reconstitute with 100 ul of water).

Reconstitution Method:

1. Centrifuge at 5,000xg for 5min.
2. Carefully open the tube and add 100ul of sterile water to dissolve the DNA.
3. Close the tube and incubate for 10 minutes at room temperature.
4. Briefly vortex the tube and then do a quick spin (less than 5000xg) to concentrate the liquid at the bottom.
5. Store the suspended plasmid at -20°C. The DNA is stable for at least one year from date of shipping when stored at -20°C.

RefSeq: [NM_001006618.1](#)

RefSeq Size: 1593 bp

RefSeq ORF: 972 bp

Locus ID: 79109

UniProt ID: [Q9BPZ7](#)

Cytogenetics: 9q33.3

Protein Families: Druggable Genome

MW: 36.2 kDa

Gene Summary: This gene encodes a protein that is highly similar to the yeast SIN1 protein, a stress-activated protein kinase. Alternatively spliced transcript variants encoding distinct isoforms have been described. Alternate polyadenylation sites as well as alternate 3' UTRs have been identified for transcripts of this gene. [provided by RefSeq, Jul 2008]

Transcript Variant: This variant (6), also known as Sin1a, differs in the 3' coding region and UTR, compared to variant 1. The resulting protein (isoform 5), also known as the alpha isoform, has a shorter and distinct C-terminus, compared to isoform 1. The existence of this isoform has not been confirmed experimentally.