

## Product datasheet for **SC300910**

### Plakophilin 1 (PKP1) (NM\_001005337) Human Untagged Clone

#### Product data:

Product Type:	Expression Plasmids
Product Name:	Plakophilin 1 (PKP1) (NM_001005337) Human Untagged Clone
Tag:	Tag Free
Symbol:	PKP1
Synonyms:	B6P; EDSFS
Mammalian Cell Selection:	Neomycin
Vector:	pCMV6-Entry (PS100001)
E. coli Selection:	Kanamycin (25 ug/mL)



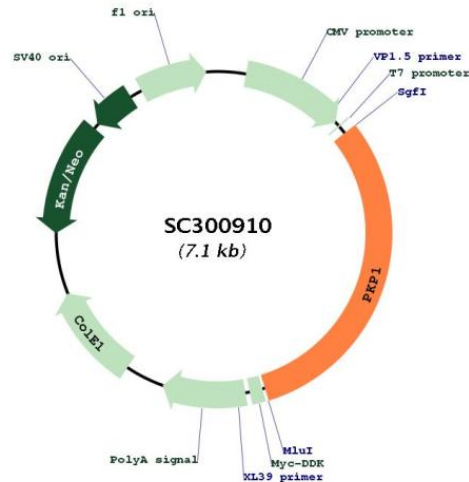
[View online »](#)

**Fully Sequenced ORF:** >SC300910 representing NM\_001005337.  
 Blue=Insert sequence Red=Cloning site Green=Tag(s)

```

GCTCGTTTAGTGAACCGTCAGAATTTTGTAAACGACTCACTATAGGGCGGCCGGGAATTCGTGACTG
GATCCGGTACCGAGGAGATCTGCCGCCGCGATCGCC
ATGAACCACTCGCCGCTCAAGACCGCCTTGGCGTACGAATGCTTCCAGGACCAGGACAACCTCCACGTTG
CGTTTGGCGTCGGACCAAAGATGAAAACAGGCACGTCTGGCAGGCAGCGCGTGCAGGAGCAGGTGATG
ATGACCGTCAAGCGGCAGAAGTCCAAGTCTTCCAGTCGTCCACCCTGAGCCACTCCAATCGAGGTTC
ATGTATGATGGCTTGGCTGACAATTACAACATATGGGACCACCAGCAGGAGCAGCTACTACTCCAAGTTC
CAGGCAGGGAATGGCTCATGGGGATATCCGATCTACAATGGAACCCCTCAAGCGGGAGCCTGACAACAGG
CGCTTCAGCTCCTACAGCCAGATGGAGAACTGGAGCCGGCACTACCCCGGGGACGCTGTAACACCACC
GGCGCAGGCAGCGACATCTGCTTCATGCAGAAAATCAAGGCGAGCCGAGTGAGCCCGACCTCTACTGT
GACCCACGGGGCACCTGCGCAAGGGCACGCTGGGCAGCAAGGGCCAGAAGACCACCCAGAACCCTAC
AGCTTTTACAGCACCTGCAGTGGTCAGAAGGCCATAAAGAAGTGCCTGTGCGCCCGCCCTTTGTGCC
TCCAAGCAGGACCCTGTGTATATCCCGCCATCTCCTGCAACAAGGACCTGTCTTTGGCCACTCTAGG
GCCAGCTCCAAGATCTGCAGTGAGGACATCGAGTGCAGTGGGCTGACCATCCCAAGGCTGTGCAGTAC
CTGAGCTCCCAGGATGAGAAGTACCAGGCCATTGGGGCCTATTACATCCAGCATACCTGTTCCAGGAT
GAATCTGCCAAGCAACAGGTCTATCAGCTGGGAGGCATCTGCAAGCTGGTGGACCTCTCCGAGCCCC
AACCAGAACGTCAGCAGGCCCGCGCAGGGGCCCTGCGCAACCTGGTGTTCAGGAGCACCACCAACAAG
CTGGAGACCCGGAGGCAGAATGGGATCCGCGAGGCAGTCAGCCTCCTGAGGAGAACCGGGAACGCCGAG
ATCCAGAAGCAGCTGACTGGGCTGCTCTGGAACCTGTCTTCCACTGACGAGCTGAAGGAGAACTCATT
GCCGACGCCCTGCCTGTCTGGCCGACCGCGTCATCATTCCCTTCTCTGGCTGGTGGCATGGCAATAGC
AACATGTCCCAGGAGTGGTGGACCTGAGGTCTTCTTCAATGCCACAGGCTGCTTGAGGAACCTGAGC
TCGGCCGATGCAGGCCGCGCAGACCATGCGTAACTACTCAGGGCTCATTGATTCCCTCATGGCCTATGTC
CAGAACTGTGTAGCGCCAGCCGCTGTGACGACAAGTCTGTGAAAACGATGTGTGTTCTGCACAAC
CTCTCTACCGCCTGGACGCCGAGGTGCCACCCGCTACCGCCAGCTGGAGTATAACGCCCGCAACGCC
TACACCGAGAAGTCTCCACTGGCTGCTTACGCAACAAGAGCGACAAGATGATGAACAACAACATGAC
TGCCCCCTGCCTGAGGAAGAGACCAACCCCAAGGGCAGCGGCTGGTTGTACCATTAGATGCCATCCGC
ACCTACCTGAACCTCATGGCAAGAGCAAGAAAGATGCTACCCTGGAGGCCTGTGCTGGTGCCTGCAG
AACCTGACAGCCAGCAAGGGCTGATGTCCAGTGGCATGAGCCAGTTGATTGGGCTGAAGGAAAAGGGC
CTGCCACAAATTGCCCGCTCCTGCAATCTGGCAACTCTGATGTGGTGGGTCCGGAGCCTCCCTCCTG
AGCAACATGTCCCGCCACCCTCTGCTGCACAGAGTGTGGGGAACCAGGTGTTCCCGGAGGTGACCAGG
CTCCTCACCAGCCACACTGGCAATACCAGCAACTCCGAAGACATCTTGTCTCGGCCTGCTACACTGTG
AGGAACCTGATGGCCTCGCAGCCACAACCTGGCCAAGCAGTACTTCTCCAGCAGCATGCTCAACAACATC
ATCAACCTGTGCCGAAGCAGTGCCTCACCAAGGCCGAGAAAGCTGCCCGGCTTCTCCTGTCTGACATG
TGGTCCAGCAAGGAACCTGAGGGTGTCTCAGACAGCAAGGTTTCGATAGGAACATGCTGGGAACCTTA
GCTGGGGCCAACAGCCTCAGGAACCTCACCTCCGATTCTAA
ACGCGTACGCGGCCGCTCGAGCAGAAACTCATCTCAGAAGAGGATCTGGCAGCAAATGATATCCTGGAT
TACAAGGATGACGACGATAAGGTTTAAACGGCCGGC
  
```

**Restriction Sites:** SgfI-MluI

**Plasmid Map:**


**ACCN:** NM\_001005337

**Insert Size:** 2181 bp

**OTI Disclaimer:** Our molecular clone sequence data has been matched to the reference identifier above as a point of reference. Note that the complete sequence of our molecular clones may differ from the sequence published for this corresponding reference, e.g., by representing an alternative RNA splicing form or single nucleotide polymorphism (SNP).

**OTI Annotation:** This TrueClone is provided through our Custom Cloning Process that includes sub-cloning into OriGene's pCMV6 vector and full sequencing to provide a non-variant match to the expected reference without frameshifts, and is delivered as lyophilized plasmid DNA.

**Components:** The ORF clone is ion-exchange column purified and shipped in a 2D barcoded Matrix tube containing 10ug of transfection-ready, dried plasmid DNA (reconstitute with 100 ul of water).

**Reconstitution Method:**

1. Centrifuge at 5,000xg for 5min.
2. Carefully open the tube and add 100ul of sterile water to dissolve the DNA.
3. Close the tube and incubate for 10 minutes at room temperature.
4. Briefly vortex the tube and then do a quick spin (less than 5000xg) to concentrate the liquid at the bottom.
5. Store the suspended plasmid at -20°C. The DNA is stable for at least one year from date of shipping when stored at -20°C.

**RefSeq:** [NM\\_001005337.2](#)

**RefSeq Size:** 5384 bp

**RefSeq ORF:** 2181 bp

**Locus ID:** 5317

**UniProt ID:** [Q13835](#)

**Cytogenetics:** 1q32.1

**Protein Families:** Druggable Genome

**MW:** 80.5 kDa

**Gene Summary:** This gene encodes a member of the arm-repeat (armadillo) and plakophilin gene families. Plakophilin proteins contain numerous armadillo repeats, localize to cell desmosomes and nuclei, and participate in linking cadherins to intermediate filaments in the cytoskeleton. This protein may be involved in molecular recruitment and stabilization during desmosome formation. Mutations in this gene have been associated with the ectodermal dysplasia/skin fragility syndrome. Two transcript variants encoding different isoforms have been found for this gene. [provided by RefSeq, Jul 2010]

Transcript Variant: This variant (1a) represents the shorter transcript variant as compared to variant 1b. It encodes the shorter protein (isoform 1a), compared to isoform 1b. Sequence Note: This RefSeq record was created from transcript and genomic sequence data to make the sequence consistent with the reference genome assembly. The genomic coordinates used for the transcript record were based on transcript alignments.