

## Product datasheet for **SC300848**

### LRRC55 (NM\_001005210) Human Untagged Clone

#### Product data:

Product Type:	Expression Plasmids
Product Name:	LRRC55 (NM_001005210) Human Untagged Clone
Tag:	Tag Free
Symbol:	LRRC55
Mammalian Cell Selection:	Neomycin
Vector:	pCMV6-Entry (PS100001)
E. coli Selection:	Kanamycin (25 ug/mL)
Fully Sequenced ORF:	>SC300848 representing NM_001005210. Blue=Insert sequence Red=Cloning site Green=Tag(s)

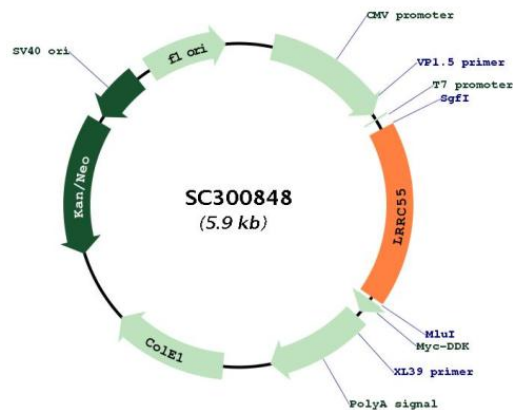
```
GCTCGTTTAGTGAACCGTCAGAATTTTGTAAACGACTCACTATAGGGCGGCCGGAATTCGTCGACTG
GATCCGGTACCGAGGAGATCTGCCGCCGCGATCGCC
ATGCTCAGAAGCCCCACCTTCACAGACGCTGGCCCCAGATGTAGCTGCCTTCTGTGTCACAGACTCTC
GATTCCATGGACACAGTCTCATGGGCTCCCTCCAGCACTGCTGTTGCCTGCTGCCTAAGATGGGTGAC
ACTTGGGCCAGCTTCCCTGGCCCGGGCCACCCACCCAGCAATGCTGCTGATCTCCCTCCTTTGGCA
GCCGGTGTGACTCGGATGCCGGCACCAGCTGCCCGTCTTTGCACATGCCGAACCAGGTGGTG
GATTGTAGCAGCCAGCGCTATTCTCCGTGCCCCAGACCTGCCAATGGACACCCGAAACCTCAGCCTG
GCCACAACCGCATCACAGCAGTGCCGCTGGCTACCTCACATGCTACATGGAGCTCCAGGTGCTGGAT
TTGCACAACAACCTTAATGGAGCTGCCCGGGGCTCTTCTCCATGCCAAGCGCTTGGCACACTTG
GACCTGAGCTACAACAATTTAGCCATGTGCCAGCCGACATGTTCCAGGAGGCCCATGGGCTAGTCCAC
ATCGACCTGAGCCACAACCCCTGGCTGCGGAGGGTGCATCCCAGGCCTTTAGGGCCTCATGCAGCTC
CGAGACCTGGACCTCAGTTATGGGGCCTGGCCTTCTCAGCCTGGAGGCTTTGAGGGCCTACCGGGG
CTGGTGACCTGCAGATCGGTGGCAATCCCTGGTGTGTGGTGCACCATGGAACCCCTGCTGAAGTG
CTGCGAAACCGGATCCAGCGCTGTACAGCAGATTCTCAGCTGGCTGAGTGCCGGGGCCCTCTGAAGTC
GAGGGCGCCCGCTTTCTCACTCACTGAGGAGAGCTTCAAGGCCTGCCACCTGACCCTGACCCTGGAT
GATTACCTATTATTGCGTTCGTGGCTTCGTGGTCTCCATTGCTTCTGTGGCCACCAACTCTCTCTG
GGCATCACTGCCAAGTCTGCCACCGCTGGAGCAAGGCCAGTGAAGAGGAAGAGATCTGA
ACGCGTACGCGGGCCGCTCGAGCAGAAACTCATCTCAGAAGAGGATCTGGCAGCAAATGATATCCTGGAT
TACAAGGATGACGACGATAAGGTTTAAACGGCCGGC
```

Restriction Sites: SgfI-MluI



[View online »](#)

## Plasmid Map:



ACCN: NM\_001005210

Insert Size: 1026 bp

OTI Disclaimer: Our molecular clone sequence data has been matched to the reference identifier above as a point of reference. Note that the complete sequence of our molecular clones may differ from the sequence published for this corresponding reference, e.g., by representing an alternative RNA splicing form or single nucleotide polymorphism (SNP).

OTI Annotation: This TrueClone is provided through our Custom Cloning Process that includes sub-cloning into OriGene's pCMV6 vector and full sequencing to provide a non-variant match to the expected reference without frameshifts, and is delivered as lyophilized plasmid DNA.

Components: The ORF clone is ion-exchange column purified and shipped in a 2D barcoded Matrix tube containing 10ug of transfection-ready, dried plasmid DNA (reconstitute with 100 ul of water).

Reconstitution Method:

1. Centrifuge at 5,000xg for 5min.
2. Carefully open the tube and add 100ul of sterile water to dissolve the DNA.
3. Close the tube and incubate for 10 minutes at room temperature.
4. Briefly vortex the tube and then do a quick spin (less than 5000xg) to concentrate the liquid at the bottom.
5. Store the suspended plasmid at -20°C. The DNA is stable for at least one year from date of shipping when stored at -20°C.

RefSeq: [NM\\_001005210.2](#)

RefSeq Size: 5407 bp

RefSeq ORF: 1026 bp

Locus ID:	219527
UniProt ID:	<a href="#">Q6ZSA7</a>
Cytogenetics:	11q12.1
Protein Families:	Transmembrane
MW:	37.6 kDa
Gene Summary:	Auxiliary protein of the large-conductance, voltage and calcium-activated potassium channel (BK alpha). Modulates gating properties by producing a marked shift in the BK channel's voltage dependence of activation in the hyperpolarizing direction, and in the absence of calcium.[UniProtKB/Swiss-Prot Function]