

Product datasheet for SC300832

OR7G1 (NM_001005192) Human Untagged Clone

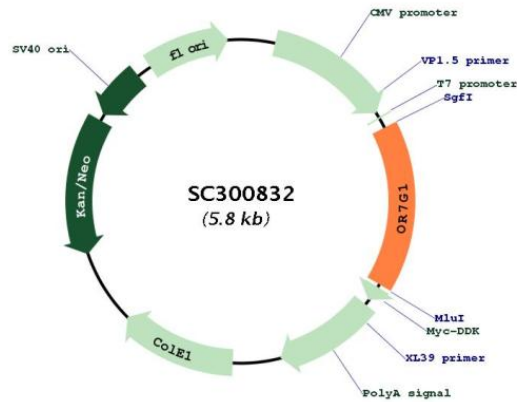
Product data:

Product Type:	Expression Plasmids
Product Name:	OR7G1 (NM_001005192) Human Untagged Clone
Tag:	Tag Free
Symbol:	OR7G1
Synonyms:	OR7G1P; OR19-8; OR19-15
Mammalian Cell Selection:	Neomycin
Vector:	pCMV6-Entry (PS100001)
E. coli Selection:	Kanamycin (25 ug/mL)
Fully Sequenced ORF:	>SC300832 representing NM_001005192. Blue=Insert sequence Red=Cloning site Green=Tag(s)

```
GCTCGTTT TAGTGAACCGTCAGAATTTTGT AATACGACTCACTATAGGGCGCCGGGAATTCGTCGACTG
GATCCGGTACCGAGGAGATCTGCCGCC GCGATCGCC
ATGGGACCCAGAAACCAACAGCTGTTTCAGAATTTCTTCTCATGAAAGTGACAGAGGCCAGAAGT
AAGTTAATCCCTTTCAGCCTGTTCTGTCCATGTACCTGGTCACCATCCTGGGAACTGCTCATTCTC
CTGGCTGTCATCTCTGACTCCCACCTCCACACCCCATGTACTTCTCTTTAATCTCTCCTTTACT
GACATCTGTTTAACCACAACCACAGTCCCAAAGATCCTAGTGAACATCCAAGCTCAGAATCAGAGTATC
ACTTACACAGGCTGCCTCACCCAGATCTGTCTTGTCTTGGTTTTGCTGGCTTGGAAAGTTGCTTTCTT
GCAGTCATGGCCTACGACCGCTATGTGGCCATTTGCCACCCACTGAGGTACACAGTCTCATGAATGTC
CATTTCTGGGGCTTGCTGATTCTTCTCTCCATGTTTCATGAGCACTATGGATGCCCTGGTTCAGAGTCTG
ATGGTATTGCAGCTGTCTTCTGCAAAAACGTTGAAATCCCTTTGTTCTTCTGTGAAGTCGTTTCAGGTC
ATCAAGCTCGCCTGTTCTGACACCCTCATCAACAACATCCTCATATATTTGCAAGTAGTGATTTGGT
GCAATTCCTCTCTCTGGAATAATTTTCTCTTATTTCTCAAATAGTCACCTCTGTTCTGAGAATGCCATCA
GCAAGAGGAAAGTATAAAGCGTTTTCCACCTGTGGCTGTCACCTCTGTGTTTTTCTTGTCTATGGG
ACAGCTTTTGGGGTGACATTAGTTCTGCTGTTGCTGAGTCTTCCGAATTAAGTCTGTGGCTTCAGTG
ATGTACACTGTGGTCCCTCAAATGATGAACCCCTCATCTACAGCCTGAGAAATAAGGAGATGAAGAAA
GCTTTGAGGAACTTATTGGTAGGCTGTTTCTTTTTAG
ACGCGTACGCGGCCGCTCGAGCAGAAACTCATCTCAGAAGAGGATCTGGCAGCAAATGATATCCTGGAT
TACAAGGATGACGACGATAAGGTTTAAACGGCCGGC
```

Restriction Sites: SgfI-MluI



Plasmid Map:


ACCN: NM_001005192

Insert Size: 936 bp

OTI Disclaimer: Our molecular clone sequence data has been matched to the reference identifier above as a point of reference. Note that the complete sequence of our molecular clones may differ from the sequence published for this corresponding reference, e.g., by representing an alternative RNA splicing form or single nucleotide polymorphism (SNP).

OTI Annotation: This TrueClone is provided through our Custom Cloning Process that includes sub-cloning into OriGene's pCMV6 vector and full sequencing to provide a non-variant match to the expected reference without frameshifts, and is delivered as lyophilized plasmid DNA.

Components: The ORF clone is ion-exchange column purified and shipped in a 2D barcoded Matrix tube containing 10ug of transfection-ready, dried plasmid DNA (reconstitute with 100 ul of water).

Reconstitution Method:

1. Centrifuge at 5,000xg for 5min.
2. Carefully open the tube and add 100ul of sterile water to dissolve the DNA.
3. Close the tube and incubate for 10 minutes at room temperature.
4. Briefly vortex the tube and then do a quick spin (less than 5000xg) to concentrate the liquid at the bottom.
5. Store the suspended plasmid at -20°C. The DNA is stable for at least one year from date of shipping when stored at -20°C.

RefSeq: [NM_001005192.2](#)

RefSeq Size: 936 bp

RefSeq ORF: 936 bp

Locus ID: 125962

UniProt ID: [Q8NGA0](#)

Cytogenetics: 19p13.2

Protein Families: Transmembrane

Protein Pathways: Olfactory transduction

MW: 34.8 kDa

Gene Summary: Olfactory receptors interact with odorant molecules in the nose, to initiate a neuronal response that triggers the perception of a smell. The olfactory receptor proteins are members of a large family of G-protein-coupled receptors (GPCR) arising from single coding-exon genes. Olfactory receptors share a 7-transmembrane domain structure with many neurotransmitter and hormone receptors and are responsible for the recognition and G protein-mediated transduction of odorant signals. The olfactory receptor gene family is the largest in the genome. The nomenclature assigned to the olfactory receptor genes and proteins for this organism is independent of other organisms. [provided by RefSeq, Jul 2008]