

Product datasheet for **SC300249**

Transmembrane protein 211 (TMEM211) (NM_001001663) Human Untagged Clone

Product data:

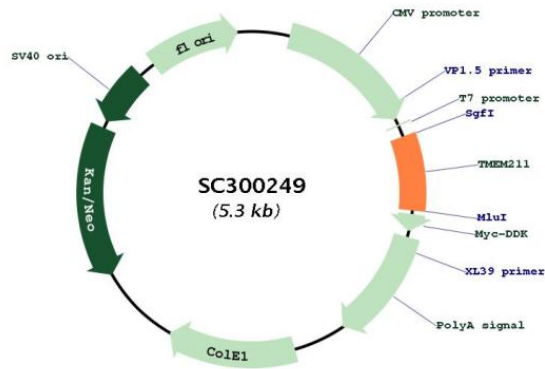
Product Type:	Expression Plasmids
Product Name:	Transmembrane protein 211 (TMEM211) (NM_001001663) Human Untagged Clone
Tag:	Tag Free
Symbol:	TMEM211
Synonyms:	bA9F11.1
Mammalian Cell Selection:	Neomycin
Vector:	pCMV6-Entry (PS100001)
E. coli Selection:	Kanamycin (25 ug/mL)
Fully Sequenced ORF:	>SC300249 representing NM_001001663. Blue=Insert sequence Red=Cloning site Green=Tag(s)

```
GCTCGTTTAGTGAACCGTCAGAATTTTGTAAACGACTCACTATAGGGCGCCGGGAATTCGTCGACTG
GATCCGGTACCGAGGAGATCTGCCGCCGCGATCGCC
ATGCTCCTCGGAGGCTGGCTCCTGTTGGCCTTCAATGCAATTTTCCTCCTGTCTTGGGCTGTGGCCCC
AAAGGGCTGTGCCAAGGAGAAGCAGTGTCCAATGCCAGGGTGCAGGCAGTGGCAGCTACTGCCATG
ATTGTGGGTCTGCTGATTTTCCAATCGGCCTTGCTCCCATTCATCAAGGAAGTGTGCGAAGCCTCC
TCCATGTATTATGGTGGGAAGTCCGGCTGGGTTGGGTTACATGACTGCTATCCTCAATGCAGTCTG
GCCAGCCTCCTGCCATCATCAGCTGGCCCCACACAACCAAGGTCCAAGGAGGACCATCATCTTCTCC
AGTGCCACCGAGAGAATCATCTTTGTGCCAGAAATGAACAAATAA
ACGCGTACGCGGCCGCTCGAGCAGAACTCATCTCAGAAGAGGATCTGGCAGCAAATGATATCCTGGAT
TACAAGGATGACGACGATAAGGTTTAAACGGCCGCGC
```

Restriction Sites: Sgfl-MluI



[View online »](#)

Plasmid Map:


ACCN: NM_001001663

Insert Size: 390 bp

OTI Disclaimer: Our molecular clone sequence data has been matched to the reference identifier above as a point of reference. Note that the complete sequence of our molecular clones may differ from the sequence published for this corresponding reference, e.g., by representing an alternative RNA splicing form or single nucleotide polymorphism (SNP).

OTI Annotation: This TrueClone is provided through our Custom Cloning Process that includes sub-cloning into OriGene's pCMV6 vector and full sequencing to provide a non-variant match to the expected reference without frameshifts, and is delivered as lyophilized plasmid DNA.

Components: The ORF clone is ion-exchange column purified and shipped in a 2D barcoded Matrix tube containing 10ug of transfection-ready, dried plasmid DNA (reconstitute with 100 ul of water).

Reconstitution Method:

1. Centrifuge at 5,000xg for 5min.
2. Carefully open the tube and add 100ul of sterile water to dissolve the DNA.
3. Close the tube and incubate for 10 minutes at room temperature.
4. Briefly vortex the tube and then do a quick spin (less than 5000xg) to concentrate the liquid at the bottom.
5. Store the suspended plasmid at -20°C. The DNA is stable for at least one year from date of shipping when stored at -20°C.

RefSeq: [NM_001001663.1](#)

RefSeq Size: 507 bp

RefSeq ORF: 390 bp

Locus ID: 255349

UniProt ID: [Q6ICI0](#)

Cytogenetics: 22q11.23

Protein Families: Transmembrane

MW: 13.9 kDa