

Product datasheet for SA6060

HTRA2 / PRSS25 (134-458, His-tag) Human Protein

Product data:

Product Type:	Recombinant Proteins
Description:	HTRA2 / PRSS25 (134-458, His-tag) human protein, 0.1 mg
Species:	Human
Expression Host:	E. coli
Expression cDNA Clone or AA Sequence:	MAVPSPPPAS PPSQYNFIAD VVEKTAPAVV YIEILDRHPF LGREVPISNG SGFVVAADGL IVTNAHWVAD RRRVRVRLLS GDTYEAVVTA VDPVADIATL RIQTKEPLPT LPLGRSADVR QGEFVAMGS PFALQNTITS GIVSSAQRPA RDLGLPQTNV EYIQTDAID FGNAGGPLVN LDGEVIGVNT MKVTAGISFA IPSDRLREFL HRGEKKNSSS GISGSQRRYI GVMMMLTSPS ILAELQLREP SFPDVQHGVL IHKVILGSPA HRAGLRPGDV ILAIGE QMVQ NAEDVYEAVR TQSQLAVQIR RGRETTLTYV TPEVTEGSHH HHHH
Tag:	His-tag
Predicted MW:	36 kDa
Concentration:	lot specific
Purity:	>95% by SDS PAGE
Buffer:	Presentation State: Purified State: Liquid purified protein Buffer System: 20 mM Tris-HCl buffer (pH 8.0), 50 mM NaCl, 1 mM DTT, 20% Glycerol
Preparation:	Liquid purified protein
Protein Description:	Mature form of HtrA2/Omi(residues 134-458), fused to His-tag, was overexpressed in E.coli, and purified by conventional column chromatography techniques.
Storage:	Store (in aliquots) at -20°C. Avoid repeated freezing and thawing.
Stability:	Shelf life: one year from despatch.
RefSeq:	NP_001308656
Locus ID:	27429
UniProt ID:	O43464
Cytogenetics:	2p13.1
Synonyms:	MGCA8; OMI; PARK13; PRSS25



[View online »](#)

Summary:

This gene encodes a serine protease. The protein has been localized in the endoplasmic reticulum and interacts with an alternatively spliced form of mitogen-activated protein kinase 14. The protein has also been localized to the mitochondria with release to the cytosol following apoptotic stimulus. The protein is thought to induce apoptosis by binding the apoptosis inhibitory protein baculoviral IAP repeat-containing 4. Nuclear localization of this protein has also been observed. Alternate splicing of this gene results in multiple transcript variants encoding different isoforms. [provided by RefSeq, Mar 2016]

Protein Families:

Druggable Genome, Protease, Transmembrane

Protein Pathways:

Parkinson's disease

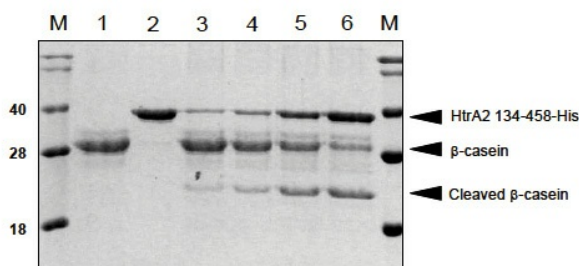
Product images:

Fig.1 Activity assay result of HtrA2/Omi after incubation at 37 °C for 2hours with β -casein as substrate.

M : ATGen mid-range marker, 1: β -casein 30 μ g, 2: HtrA2 134-458-His 30 μ g

3: β -casein 30 μ g + HtrA2 134-458-His 5 μ g, 4: β -casein 30 μ g + HtrA2 134-458-His 10 μ g

5: β -casein 30 μ g + HtrA2 134-458-His 20 μ g, 6: β -casein 30 μ g + HtrA2 134-458-His 30 μ g